

SASSO PRO 100 adjustable flush round

recessed

^{EN} Round recessed spotlight in die-cast aluminium; installation without tools in mounting set (trimless or with trim) with ball catch system; surface powder coated; installation possible in different housings; light inset rotatable and tiltable; optical attachments as accessories; high-quality reflector with spherical facet effect design, precise radiation characteristics with different beam angles; installed and exchanged without tools; COB (Chip on Board) technology for maximum efficiency; no multiple shadows; efficient LEDs with very good colour rendering

^{IT} Faretto da incasso rotondo in alluminio pressofuso; set di fissaggio con cuscinetto a sfera, senza bisogno di utensili (con o senza bordo perimetrale); verniciatura a polvere; incasso possibile in vari telai; inserto luce girevole e orientabile; unità ottiche come accessori; riflettore a sfaccettature sferiche, curva fotometrica precisa con diversi angoli di emissione; montaggio e smontaggio senza utensili; tecnologia COB (Chip on Board) per la massima efficienza; assenza di ombre multiple; LED efficienti con alta resa cromatica

Quickinfo

2700 K, 3000 K, 4000 K, colour warm dimming 2000 K - 3000 K, tunable white 1800 K - 3000 K, tunable white 2700 K - 6500 K
CRI ≥ 90, CRI ≥ 92, CRI ≥ 95 / 3
SDCM, 4 SDCM
UGR ≤ 19
fino a 105 lm/W
L80 / 50000 h, L85 / 50000 h, L90 / 50000 h
DALI-2, non DIM
front IP20

Types



Colore



Set di montaggio



Distribuzione della luce



DiiA® standards
251, 252, 253



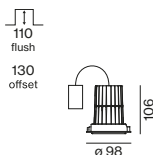
rotatable 360°,
tiltable 35°



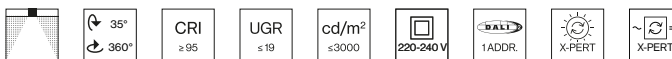
Colour Warm
Dimming 2000
- 3000 K



tunable white
1800 - 3000 K
or 2700 - 6500
K



SASSO PRO 100 adjustable



SPOT CRI ≥ 90

SYSTEM	COLOUR TEMP.	LUM. FLUX	SYSTEM	ORDER CODE
14.7 W	2700 K	1350 lm	92 lm/W	0 4 8 - 2 4 1 0 4 S
	3000 K	1410 lm	96 lm/W	0 4 8 - 2 4 1 0 5 S
	4000 K	1490 lm	101 lm/W	0 4 8 - 2 4 1 0 6 S
27.0 W	2700 K	2170 lm	80 lm/W	0 4 8 - 2 4 1 2 4 S
	3000 K	2270 lm	84 lm/W	0 4 8 - 2 4 1 2 5 S
	4000 K	2400 lm	89 lm/W	0 4 8 - 2 4 1 2 6 S

MEDIUM CRI ≥ 90

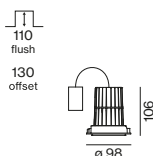
SYSTEM	COLOUR TEMP.	LUM. FLUX	SYSTEM	ORDER CODE
14.7 W	2700 K	1350 lm	92 lm/W	0 4 8 - 2 4 1 0 4 M
	3000 K	1410 lm	96 lm/W	0 4 8 - 2 4 1 0 5 M
	4000 K	1490 lm	101 lm/W	0 4 8 - 2 4 1 0 6 M
27.0 W	2700 K	2170 lm	80 lm/W	0 4 8 - 2 4 1 2 4 M
	3000 K	2270 lm	84 lm/W	0 4 8 - 2 4 1 2 5 M
	4000 K	2400 lm	89 lm/W	0 4 8 - 2 4 1 2 6 M

FLOOD

SYSTEM	COLOUR TEMP.	CRI ≥	LUM. FLUX	SYSTEM	ORDER CODE
14.7 W	2700 K	90	1360 lm	93 lm/W	0 4 8 - 2 4 1 0 4 F
	3000 K	90	1420 lm	97 lm/W	0 4 8 - 2 4 1 0 5 F
	4000 K	90	1500 lm	102 lm/W	0 4 8 - 2 4 1 0 6 F
14.9 W	CWD	95	853 lm	57 lm/W	0 4 8 - 2 4 1 1 E 3 F
27.0 W	2700 K	90	2190 lm	81 lm/W	0 4 8 - 2 4 1 2 4 F
	3000 K	90	2280 lm	84 lm/W	0 4 8 - 2 4 1 2 5 F
	4000 K	90	2420 lm	90 lm/W	0 4 8 - 2 4 1 2 6 F

WIDE FLOOD CRI ≥ 90

SYSTEM	COLOUR TEMP.	LUM. FLUX	SYSTEM	ORDER CODE
14.7 W	2700 K	1280 lm	87 lm/W	0 4 8 - 2 4 1 0 4 W
	3000 K	1340 lm	91 lm/W	0 4 8 - 2 4 1 0 5 W
	4000 K	1420 lm	97 lm/W	0 4 8 - 2 4 1 0 6 W
27.0 W	2700 K	2070 lm	77 lm/W	0 4 8 - 2 4 1 2 4 W
	3000 K	2160 lm	80 lm/W	0 4 8 - 2 4 1 2 5 W
	4000 K	2280 lm	84 lm/W	0 4 8 - 2 4 1 2 6 W



SASSO PRO 100 adjustable high output



MEDIUM CRI ≥ 90

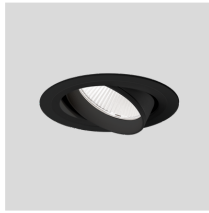
SYSTEM	COLOUR TEMP.	LUM. FLUX	SYSTEM	ORDER CODE
27.0 W	3000 K	2790 lm	103 lm/W	0 4 8 - 2 4 1 3 5 M
	4000 K	2820 lm	104 lm/W	0 4 8 - 2 4 1 3 6 M

FLOOD CRI ≥ 90

SYSTEM	COLOUR TEMP.	LUM. FLUX	SYSTEM	ORDER CODE
27.0 W	3000 K	2810 lm	104 lm/W	0 4 8 - 2 4 1 3 5 F
	4000 K	2840 lm	105 lm/W	0 4 8 - 2 4 1 3 6 F

Order options

CONTROL		COLOUR	
non DIM	1	traffic white RAL 9016	7
DALI-2	3	jet black RAL 9005	8

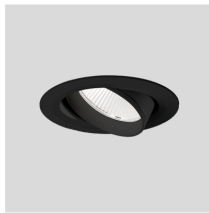
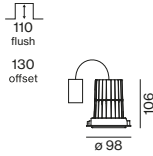


SASSO PRO 100 adjustable (TW 1800K - 3000K)



FLOOD DALI-2, CRI ≥ 92

SYSTEM	COLOUR TEMP.	LUM. FLUX	SYSTEM	ORDER CODE
29.7 W	tunable w.	1830 lm	62 lm/W	0 4 8 - 2 4 1 2 L 3 <input checked="" type="checkbox"/> F

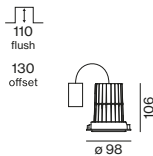


SASSO PRO 100 adjustable (TW 2700K - 6500K)

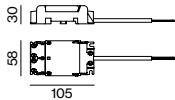


FLOOD DALI-2, CRI ≥ 92

SYSTEM	COLOUR TEMP.	LUM. FLUX	SYSTEM	ORDER CODE
27.7 W	tunable w.	2210 lm	80 lm/W	0 4 8 - 2 4 1 2 D 3 <input checked="" type="checkbox"/> F



Electrical mounting accessories (optional)

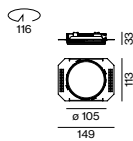


THROUGH WIRING CONNECTION BOX

TYPE	L-W-H (mm)	ORDER CODE
non DIM cable ø 4 – 12 mm	105-58-30	0 0 5 - 2 5 3 1 1 1 0
DALI cable ø 4 – 12 mm	105-58-30	0 0 5 - 2 5 5 1 1 1 0

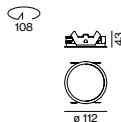
Linect®-Ready

Mounting accessories (required)



MOUNTING SET trimless

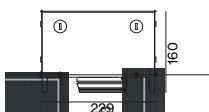
TYPE	L-W-H (mm)	ORDER CODE
for installation in plasterboard ceilings 12.5/15/25 mm	149-113-33	0 5 2 - 1 9 2 1 4 4 7



MOUNTING SET with trim for intermediate ceilings, 5-25 mm

COLOUR	Ø-H (mm)	ORDER CODE
traffic white	112-43	0 5 2 - 1 9 2 2 4 4 7
jet black	112-43	0 5 2 - 1 9 2 2 4 4 8

Mounting accessories (optional)

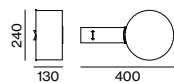


EXPOSED CONCRETE MOUNTING HOUSING

L-W-H (mm)	ORDER CODE
229-227-160	0 5 2 - 1 9 1 3 4 1 0

Order options

COLOUR	
traffic white RAL 9016	<input checked="" type="checkbox"/> 7
jet black RAL 9005	8



PRIMED CONCRETE MOUNTING HOUSING

L·W·H (mm)
240·400·130

order mounting set separately

ORDER CODE
0 5 2 - 1 9 1 4 4 2 0

Optical accessories (optional)



HONEYCOMB LOUVER

COLOUR	Ø·H (mm)	ORDER CODE
traffic white	74·11	0 4 8 - 2 1 9 1 3 1 7
jet black	74·11	0 4 8 - 2 1 9 1 3 1 8



LINEAR PRISMATIC LENS

COLOUR	Ø·H (mm)	ORDER CODE
traffic white	74·11	0 4 8 - 2 1 9 2 3 1 7
jet black	74·11	0 4 8 - 2 1 9 2 3 1 8



SNOOT

COLOUR	Ø·H (mm)	ORDER CODE
traffic white	74·25	0 4 8 - 2 1 9 1 1 1 7
jet black	74·25	0 4 8 - 2 1 9 1 1 1 8



SNOOT WITH HONEYCOMB LOUVER

COLOUR	Ø·H (mm)	ORDER CODE
traffic white	74·25	0 4 8 - 2 1 9 1 2 1 7
jet black	74·25	0 4 8 - 2 1 9 1 2 1 8

Daily Paper, Amsterdam

Paesi Bassi

Architetto

Own Space Studio –
Floor Hoeke

Lighting Design

XAL

Fotografo

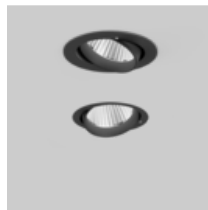
PRJCT WRKS



Prodotti utilizzati



BO 55 / 70 track



**SASSO PRO 100
adjustable flush
round recessed**





