



FRAME 100

trim

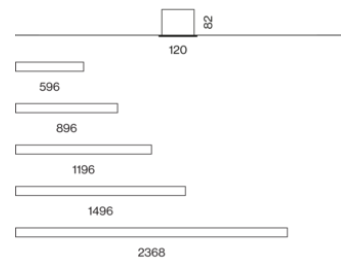
EN Luminaire housing made of extruded aluminium; recessed luminaire with trim; suitable for ceiling thickness of 8-25 mm; surface powder coated; luminaire profile for mounting available in advance; remaining luminaire components mounted without tools; light inset consisting of highly reflective coated extruded profile for improved thermal management; HPO (High Performance Opal) cover for uniform illumination; micro prismatic PMMA diffuser incl. diffuser film for homogeneous illumination and reduced luminance; energy-efficient LEDs with very good colour rendering

FR Corps de luminaire en profil extrudé en aluminium ; luminaire encastré avec bord continu ; convient aux épaisseurs de plafond de 8-25 mm ; surface thermolaquée ; Profilé de luminaire pour montage livrable avant ; composants restants du luminaire montable sans outil ; élément lumineux composé de profilé extrudé laqué hautement réfléchissant pour une gestion thermique améliorée ; cache HPO (High Performance Opal) pour éclairage homogène ; cache PMMA microprismatique, avec film diffusant inclus pour réduire la brillance avec un éclairage homogène ; LED économes en énergie à restitution de couleur élevée

Quickinfo

3000 K, 4000 K
 CRI \geq 80 / 3 SDCM (initial MacAdam)
 UGR \leq 19
 jusqu'à 3,090 lm/m
 jusqu'à 143 lm/W
 L90 / 50000 h
 DALI-2, non DIM
 High Performance Opal,
 Microprismatic
 IP20

Types



Couleur



Répartition de la lumière



Diia® standards
 251, 252, 253



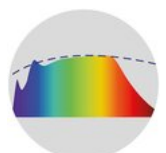
system solution



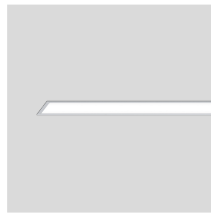
DIN EN 12464-1
 UGR \leq 19



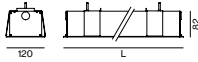
tunable white
 2700 – 6500 K
 (optional)



CRI \geq 98
XPECTRUM
 (optional)



FRAME 100 trim



MICROPRISMATIC | MID LUMEN CRI ≥ 80, non DIM

SYSTEM	LENGTH	COLOUR TEMP.	LUM. FLUX	EFFICACY	ORDER CODE
8.0 W	596 mm	3000 K	932 lm	117 lm/W	0 5 2 - 4 3 L 2 5 1 <input type="checkbox"/>
		4000 K	987 lm	123 lm/W	0 5 2 - 4 3 L 2 6 1 <input type="checkbox"/>
11.9 W	896 mm	3000 K	1400 lm	118 lm/W	0 5 2 - 4 3 L 3 5 1 <input type="checkbox"/>
		4000 K	1480 lm	124 lm/W	0 5 2 - 4 3 L 3 6 1 <input type="checkbox"/>
15.3 W	1196 mm	3000 K	1860 lm	122 lm/W	0 5 2 - 4 3 L 4 5 1 <input type="checkbox"/>
		4000 K	1970 lm	129 lm/W	0 5 2 - 4 3 L 4 6 1 <input type="checkbox"/>
19.2 W	1496 mm	3000 K	2330 lm	121 lm/W	0 5 2 - 4 3 L 5 5 1 <input type="checkbox"/>
		4000 K	2470 lm	129 lm/W	0 5 2 - 4 3 L 5 6 1 <input type="checkbox"/>
30.0 W	2368 mm	3000 K	3730 lm	124 lm/W	0 5 2 - 4 3 L 8 5 1 <input type="checkbox"/>
		4000 K	3950 lm	132 lm/W	0 5 2 - 4 3 L 8 6 1 <input type="checkbox"/>

OPAL | MID LUMEN CRI ≥ 80, non DIM

SYSTEM	LENGTH	COLOUR TEMP.	LUM. FLUX	EFFICACY	ORDER CODE
8.0 W	596 mm	3000 K	1010 lm	126 lm/W	0 5 2 - 4 3 L 2 5 1 <input type="checkbox"/> H
		4000 K	1070 lm	134 lm/W	0 5 2 - 4 3 L 2 6 1 <input type="checkbox"/> H
11.9 W	896 mm	3000 K	1520 lm	128 lm/W	0 5 2 - 4 3 L 3 5 1 <input type="checkbox"/> H
		4000 K	1600 lm	134 lm/W	0 5 2 - 4 3 L 3 6 1 <input type="checkbox"/> H
15.3 W	1196 mm	3000 K	2020 lm	132 lm/W	0 5 2 - 4 3 L 4 5 1 <input type="checkbox"/> H
		4000 K	2140 lm	140 lm/W	0 5 2 - 4 3 L 4 6 1 <input type="checkbox"/> H
19.2 W	1496 mm	3000 K	2530 lm	132 lm/W	0 5 2 - 4 3 L 5 5 1 <input type="checkbox"/> H
		4000 K	2670 lm	139 lm/W	0 5 2 - 4 3 L 5 6 1 <input type="checkbox"/> H
30.0 W	2368 mm	3000 K	4040 lm	135 lm/W	0 5 2 - 4 3 L 8 5 1 <input type="checkbox"/> H
		4000 K	4280 lm	143 lm/W	0 5 2 - 4 3 L 8 6 1 <input type="checkbox"/> H

MICROPRISMATIC | HIGH LUMEN CRI ≥ 80

SYSTEM	LENGTH	COLOUR TEMP.	LUM. FLUX	EFFICACY	ORDER CODE
13.8 W	596 mm	3000 K	1540 lm	112 lm/W	0 5 2 - 4 3 M 2 5 <input type="checkbox"/> <input type="checkbox"/>
		4000 K	1630 lm	118 lm/W	0 5 2 - 4 3 M 2 6 <input type="checkbox"/> <input type="checkbox"/>
20.6 W	896 mm	3000 K	2310 lm	112 lm/W	0 5 2 - 4 3 M 3 5 <input type="checkbox"/> <input type="checkbox"/>
		4000 K	2450 lm	119 lm/W	0 5 2 - 4 3 M 3 6 <input type="checkbox"/> <input type="checkbox"/>
27.5 W	1196 mm	3000 K	3080 lm	112 lm/W	0 5 2 - 4 3 M 4 5 <input type="checkbox"/> <input type="checkbox"/>
		4000 K	3260 lm	119 lm/W	0 5 2 - 4 3 M 4 6 <input type="checkbox"/> <input type="checkbox"/>
34.0 W	1496 mm	3000 K	3850 lm	113 lm/W	0 5 2 - 4 3 M 5 5 <input type="checkbox"/> <input type="checkbox"/>
		4000 K	4080 lm	120 lm/W	0 5 2 - 4 3 M 5 6 <input type="checkbox"/> <input type="checkbox"/>
53.0 W	2368 mm	3000 K	6160 lm	116 lm/W	0 5 2 - 4 3 M 8 5 <input type="checkbox"/> <input type="checkbox"/>
		4000 K	6520 lm	123 lm/W	0 5 2 - 4 3 M 8 6 <input type="checkbox"/> <input type="checkbox"/>

Order options

CONTROL		COLOUR		COVER OPTION	
non DIM	1	white aluminium RAL 9006	G	microprismatic (glare reduced)	G
DALI-2	3	traffic white RAL 9016	7	microprismatic	Z

OPAL | HIGH LUMEN CRI ≥ 80

SYSTEM	LENGTH	COLOUR TEMP.	LUM. FLUX	EFFICACY	ORDER CODE
13.8 W	596 mm	3000 K	1670 lm	121 lm/W	0 5 2 - 4 3 M 2 5 <input type="checkbox"/> H
		4000 K	1770 lm	128 lm/W	0 5 2 - 4 3 M 2 6 <input type="checkbox"/> H
20.6 W	896 mm	3000 K	2510 lm	122 lm/W	0 5 2 - 4 3 M 3 5 <input type="checkbox"/> H
		4000 K	2650 lm	129 lm/W	0 5 2 - 4 3 M 3 6 <input type="checkbox"/> H
27.5 W	1196 mm	3000 K	3340 lm	121 lm/W	0 5 2 - 4 3 M 4 5 <input type="checkbox"/> H
		4000 K	3540 lm	129 lm/W	0 5 2 - 4 3 M 4 6 <input type="checkbox"/> H
34.0 W	1496 mm	3000 K	4180 lm	123 lm/W	0 5 2 - 4 3 M 5 5 <input type="checkbox"/> H
		4000 K	4420 lm	130 lm/W	0 5 2 - 4 3 M 5 6 <input type="checkbox"/> H
53.0 W	2368 mm	3000 K	6680 lm	126 lm/W	0 5 2 - 4 3 M 8 5 <input type="checkbox"/> H
		4000 K	7070 lm	133 lm/W	0 5 2 - 4 3 M 8 6 <input type="checkbox"/> H

Mounting accessories (optional)
CONCRETE INSTALLATION HOUSING

L·W·H (mm)	ORDER CODE
635·116·94	0 3 6 - 0 5 0 6 6
935·116·94	0 3 6 - 0 5 0 9 6
1235·116·94	0 3 6 - 0 5 1 2 6
1535·116·94	0 3 6 - 0 5 1 5 6
2407·116·94	0 3 6 - 0 5 2 3 6

no use for wall installation (only on request)

Order options

CONTROL		COLOUR		COVER OPTION	
non DIM	<input type="checkbox"/>	1 white aluminium RAL 9006	<input type="checkbox"/>	G microprismatic (glare reduced)	<input type="checkbox"/>
DALI-2	<input type="checkbox"/>	3 traffic white RAL 9016	<input type="checkbox"/>	7 microprismatic	<input type="checkbox"/>

Volksschule Puntigam, Graz

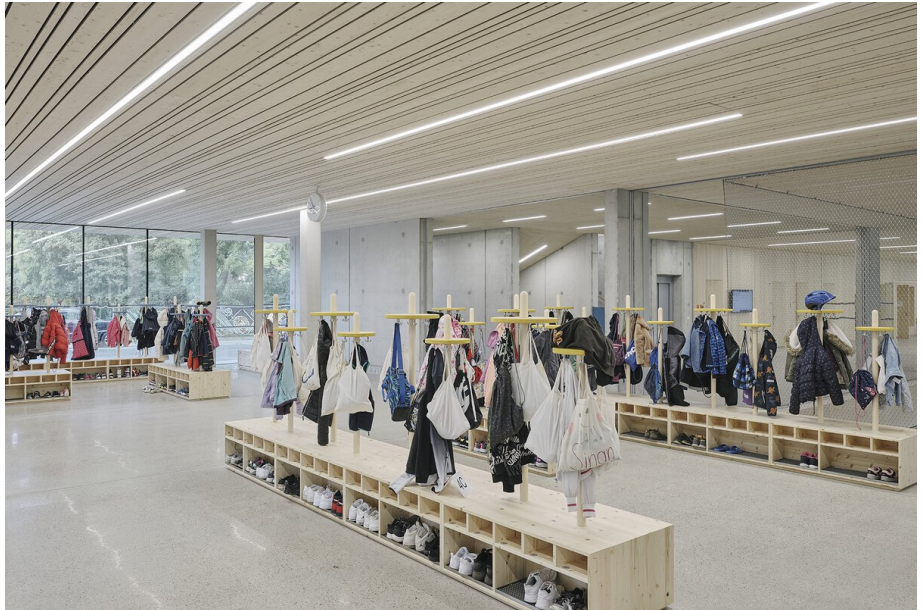
Autriche

Architecte

Franz und Sue ZT GmbH

Photographe

Schreyer David



Produits utilisés



BASO 60 IP54 trim system



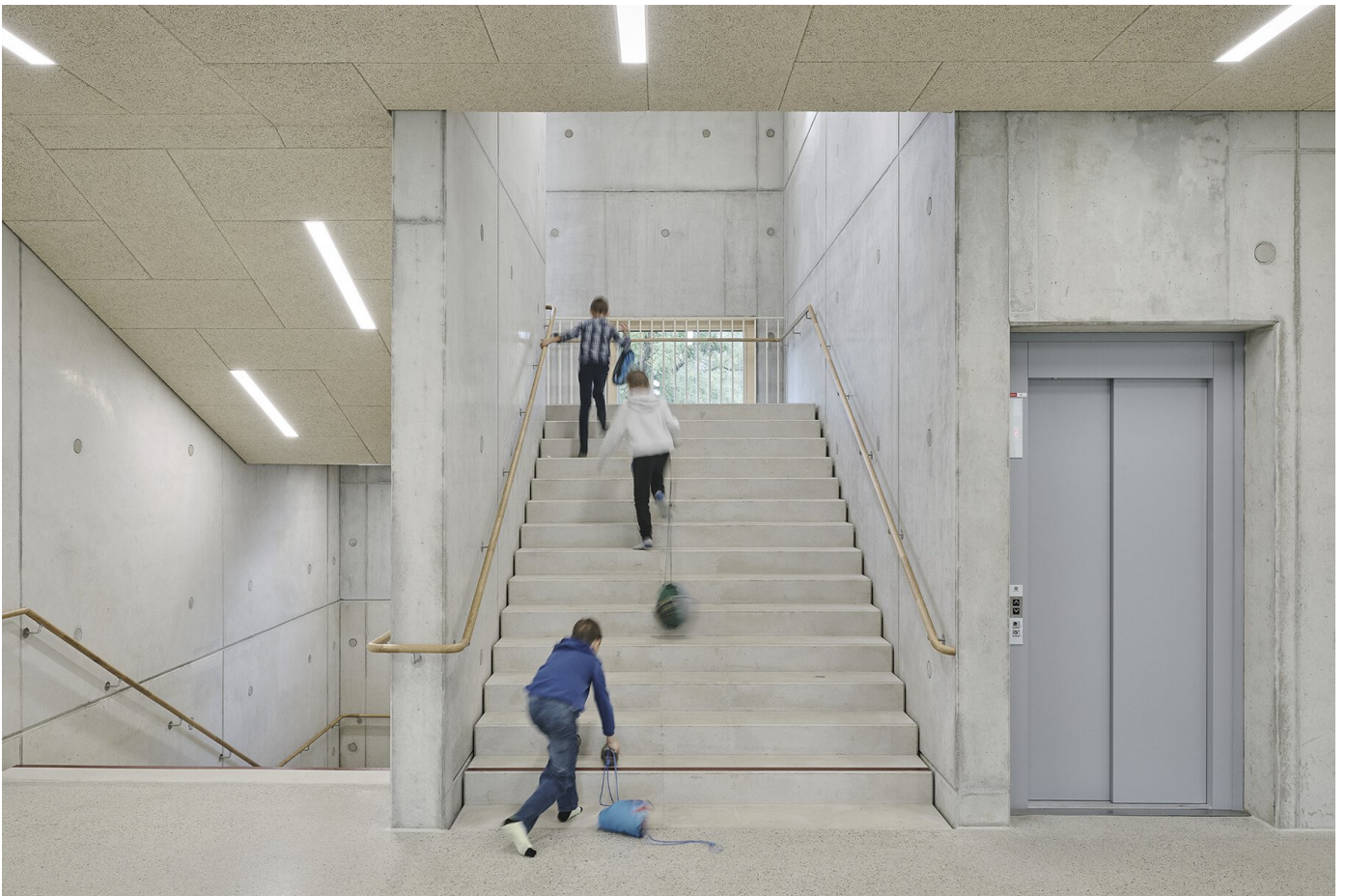
FRAME 100 trim



FRAME 100 trim system













RLB Headquarters, Graz

Autriche

Architecte

Strohecker ZT GmbH,
Graz

Lighting Design

KLAUSS Elektro-
Anlagen
Planungsges.m.b.H.,
Graz

Photographe

Paul Ott



Produits utilisés



FRAME 100 trim



SASSO 60 base 1
lamp ceiling



