

## TASK circle

suspended

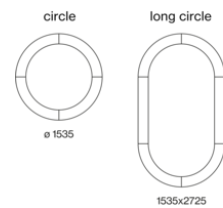
**EN** Ring-shaped suspended luminaire, consisting of single elements in quarter circle or rectangular shape; Luminaire housing made of aluminium with rounded edges; ultra low-profile design (only 15mm); surface powder coated; cable suspension, toolless height adjustment; convenient quick mounting system without tools; incl. feeder cable; direct light distribution by LGP body (Light Guiding Prism); side coupled light directed downwards by laser engraving; indirect light component with special PCBs for increased luminous flux and maximum ceiling illumination; completely homogeneous illumination; energy-efficient LEDs with very good colour rendering; canopy for through wiring; optional acoustic elements available

**FR** Luminaire suspendu circulaire, composé d'éléments individuels en forme de quart-de-cercle ou de rectangle; Corps du luminaire en aluminium avec bords arrondis; forme extrêm. plate (15mm seulement); surface thermolaquée; suspension à câble réglable en hauteur sans outil; système de montage rapide, convivial et sans outil; incl. conduit d'alimentation; distribution de lumière directe par LGP-Body (Light Guiding Prism); lumière couplée latéralement guidée vers le bas par gravure laser; partie indirecte avec platines dédiées pour un flux lumineux accru et un éclairage maximal du plafond; éclairage parfaitement homogène; LED économes en énergie à restitution de couleur élevée; cache-piton pour câblage continu; en option: éléments acoustiques disponible

### Quickinfo

4000 K  
 CRI  $\geq$  90 / 3 SDCM (initial MacAdam)  
 UGR  $\leq$  19  
 jusqu'à  $\downarrow$  19,900 lm /  $\uparrow$  10,300 lm  
 jusqu'à 119 lm/W  
 L90 / 50000 h  
 DALI-2  
 Microprismatic  
 IP20

### Types



### Couleur



### Répartition de la lumière



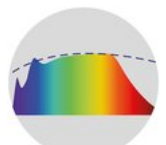
DiiA<sup>®</sup> standards  
 251, 252, 253



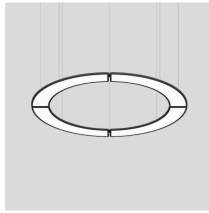
clicksystem



DIN EN 12464-1  
 UGR  $\leq$  19



CRI  $\geq$  98  
 XPECTRUM  
 (optional)

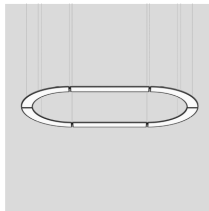
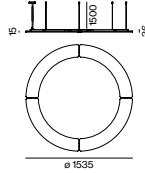


### TASK circle suspended



**DIRECT / INDIRECT POWER CRI ≥ 90, DALI-2**

SYSTEM	COLOUR TEMP.	LUM. FLUX	EFFICACY	ORDER CODE
169.0 W	4000 K	↓13200/↑16870 lm	119 lm/W	0 5 9 - 5 2 8 1 1 3 <input checked="" type="checkbox"/> K

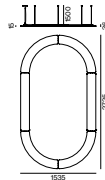


### TASK long circle suspended

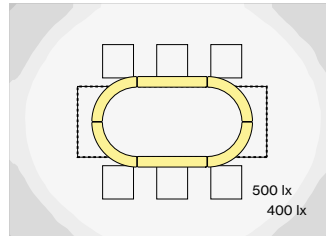


**DIRECT / INDIRECT POWER CRI ≥ 90, DALI-2**

SYSTEM	COLOUR TEMP.	LUM. FLUX	EFFICACY	ORDER CODE
253.0 W	4000 K	↓19900/↑10300 lm	119 lm/W	0 5 9 - 5 2 8 2 1 3 <input checked="" type="checkbox"/> K



### Planning Information



**TASK long circle**  
252W, 4000K, direct/indirect power

**ROOM VALUES**

Room dimensions	5.4 × 4 × 2.8 m
Reflection factor	0.7   0.5   0.2
Maintenance factor	0.8
Suspension height	2.25 m

**CALCULATION SURFACE** .....

Surface dimensions	3.2 × 1.2 m
Surface height	0.75 m
Average illuminance (E <sub>m</sub> )	> 500 lx
Uniformity (U <sub>0</sub> )	> 0.6



**GLARE EVALUATION**

Table Classification X=4H | Y=8H | S=0.25H

UGR transversal	≤ 19
UGR axial	≤ 19

#### Order options

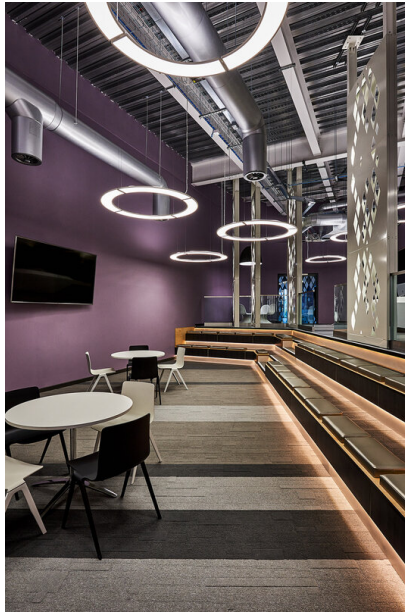
COLOUR	<input checked="" type="checkbox"/>
pure white RAL 9010	7
jet black RAL 9005	8

# Compound Semiconductor Applications Catapult, South Wales

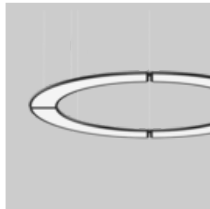
Royaume-Uni

**Architecte**  
Monteith Scott

**Photographe**  
Richard Kiely



## Produits utilisés



**TASK circle  
suspended**



**MINO 100 ceiling /  
suspended system**

