

STREAMCUT

surface

EN Floor or wall mounted light in aluminium with simple, minimalist design; luminaire head with integrated cooling fins; +/- 90° tiltable, lockable every 30°; anodised surface and dark grey powder coated; optional mounting screwed on or with ground spike (available as an accessory); partially printed safety glass, fixed with stainless steel screws; incl. high quality lens system symmetrical or asymmetrical light distribution; energy-efficient LEDs with very good colour rendering; degree of protection IP65, with pressure compensation valve; ambient temperatures from -20°C to +50°C; separate luminaire wiring compartment, suitable for through wiring

ES Lámparas aptas para el montaje en suelo o en pared de aluminio con un diseño minimalista; cabezal de lámpara con aletas de refrigeración; Orientable +/- 90° y fijable cada 30°; superficie anodizada y pintada al polvo en gris oscuro; montaje opcionalmente atornillado o con piqueta (disponible como accesorio); cristal seguridad parcialmente grabado, fijado con tornillos acero inoxidable; incluida óptica de alta calidad con distribución de luz simétrica o asimétrica; LEDS de alta eficiencia que proporcionan una alta reproducción cromática; tipo protección IP65, con válvula compensación presión; temperatura ambiente de -20°C a +50°C; espacio de conexión de lámpara separado, apropiado para cableado pasante

Quickinfo

3000 K
CRI ≥ 80, CRI ≥ 90 / 3 SDCM
(initial MacAdam)
UGR ≤ 19
hasta 96 lm/W
L85 / 50000 h, L95 / 50000 h
non attenuable
IP65, IK07

Types

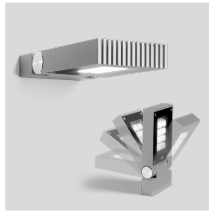


Color



Distribución luminosa





STREAMCUT surface



ASYMMETRIC grey aluminium, non DIM

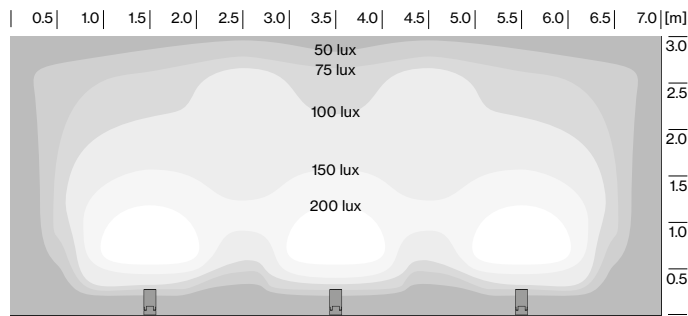
SYSTEM	COLOUR TEMP.	LUM. FLUX	EFFICACY	ORDER CODE
13.5 W	3000 K, CRI ≥ 80	1180 lm	87 lm/W	0 8 8 - 2 8 2 1 5 1 D A
34.0 W	3000 K, CRI ≥ 90	2710 lm	80 lm/W	0 8 8 - 2 8 5 1 5 1 D A



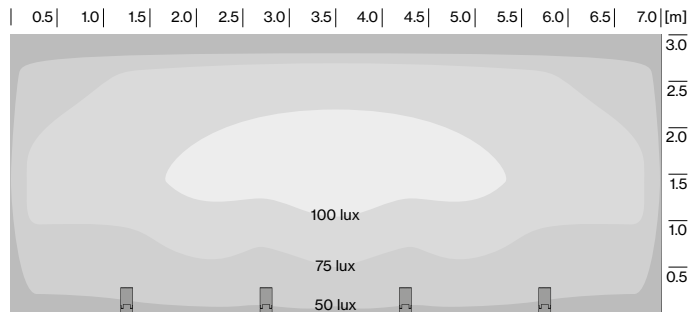
FLOOD grey aluminium, CRI ≥ 80, non DIM

SYSTEM	COLOUR TEMP.	LUM. FLUX	EFFICACY	ORDER CODE
13.5 W	3000 K	1300 lm	96 lm/W	0 8 8 - 2 8 2 1 5 1 D F

Planning Information

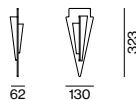


STREAMCUT surface (14 W) with symmetric flood optics (3 luminaires)
zonal lighting: distance to wall: 1.5 m / distance between luminaires: 2.0 m, 30° tilt



STREAMCUT surface (14 W) with asymmetric optics (4 luminaires)
areal lighting: distance to wall: 1.5 m / distance between luminaires: 1.5 m, 30° tilt

Mounting accessories (optional)



EARTH SPIKE

L-W-H (mm)
130-62-323

ORDER CODE

0 8 8 - 2 8 9 2 1 1 0