



## LENO

trim system

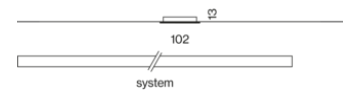
**EN** Low profile recessed channel; suitable for installation in 12.5mm ceilings, with trim; suitable for wall or ceiling mounting; designed for continuous lighting systems; surface powder coated; easy mounting without need to cut the substructure; fall-safe light inset made of extruded aluminium profile, can be inserted in the channel without tools by magnetic holders; side coupled light, directed downwards by LGP body (Light Guiding Prism) and highly efficient reflector; homogeneously illuminated, satinised (flush or jut-out) or microprismatic PMMA cover; optional with asymmetric light distribution; energy-efficient LEDs with very good colour rendering; incl. external converter for ceiling insertion

**ES** Canal para montaje empotrado extremadamente plano; apropiado para montaje en techos de 12,5mm, con borde de contorno; apropiado para el montaje en la pared y en el techo; diseñado para la creación de sistemas continuos; superficie con recubrimiento de pintura en polvo; montaje sencillo sin cortar la construcción inferior; elemento de luz asegurado contra caídas de perfil de aluminio extrusionado que se puede introducir en el canal sin herramientas por medio de un soporte magnético; fuente de luz insertada en un lateral que es guiada y reflectada a través de unos prismas y reflector de alta calidad; cubierta de PMMA iluminada homogéneamente, satinada (enrasada o sobresaliente) o micro-prismática; opcional con distribución asimétrica; LEDs de alta eficiencia que proporcionan una alta reproducción cromática; incl. convertidor externo para inserción en el techo

### Quickinfo

3000 K, 4000 K  
 CRI  $\geq$  80 / 3 SDCM (initial MacAdam)  
 UGR  $\leq$  19  
 hasta 140 lm/W  
 L90 / 50000 h  
 DALI-2  
 Asymmetric Wallwasher, High Performance Opal, Jut-Out, Microprismatic  
 IP40 / back IP20 / CP2 / 220-240 V

### Types

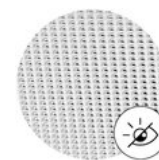


### Distribución luminosa



Data Monitoring

DiiA® standards  
 251, 252, 253

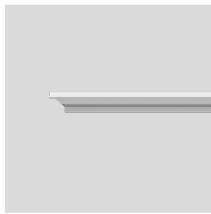


microprismatic  
 UGR  $\leq$  19



quick  
 installation

## LENO TRIM SYSTEM



### INSTALLATION CHANNEL with trim

#### L·W·H (mm)

613-102-14

1221-102-14

1830-102-14

2438-102-14

#### ORDER CODE

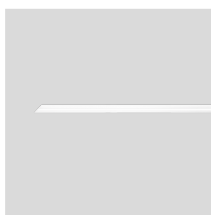
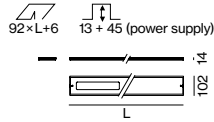
0 5 1 - 8 9 1 0 0 6 7

0 5 1 - 8 9 1 0 1 2 7

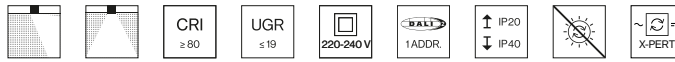
0 5 1 - 8 9 1 0 1 8 7

0 5 1 - 8 9 1 0 2 4 7

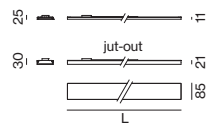
order installation channel, light inset + mounting accessories separately



### LIGHT INSET



#### MICROPRISMATIC traffic white, CRI ≥ 80, DALI-2



SYSTEM	LENGTH	LUM. FLUX	EFFICACY	ORDER CODE
9.9 W	613 mm	1230 lm	124 lm/W	0 5 1 - 8 0 1 2 :: 3 7 G
19.1 W	1221 mm	2450 lm	128 lm/W	0 5 1 - 8 0 1 4 :: 3 7 G
28.6 W	1830 mm	3680 lm	129 lm/W	0 5 1 - 8 0 1 6 :: 3 7 G
37.0 W	2438 mm	4910 lm	133 lm/W	0 5 1 - 8 0 1 8 :: 3 7 G

#### OPAL traffic white, CRI ≥ 80, DALI-2

SYSTEM	LENGTH	LUM. FLUX	EFFICACY	ORDER CODE
9.9 W	613 mm	1300 lm	131 lm/W	0 5 1 - 8 0 1 2 :: 3 7 H
19.1 W	1221 mm	2590 lm	136 lm/W	0 5 1 - 8 0 1 4 :: 3 7 H
28.6 W	1830 mm	3890 lm	136 lm/W	0 5 1 - 8 0 1 6 :: 3 7 H
37.0 W	2438 mm	5190 lm	140 lm/W	0 5 1 - 8 0 1 8 :: 3 7 H

The data values for the luminous flux may differ for specific order options by -6%. Luminous flux value refers to colour temperature 4000 K.

#### OPAL JUT-OUT traffic white, CRI ≥ 80, DALI-2

SYSTEM	LENGTH	LUM. FLUX	EFFICACY	ORDER CODE
9.9 W	613 mm	1240 lm	125 lm/W	0 5 1 - 8 0 1 2 :: 3 7 J
19.1 W	1221 mm	2490 lm	130 lm/W	0 5 1 - 8 0 1 4 :: 3 7 J
28.6 W	1830 mm	3730 lm	130 lm/W	0 5 1 - 8 0 1 6 :: 3 7 J
37.0 W	2438 mm	4970 lm	134 lm/W	0 5 1 - 8 0 1 8 :: 3 7 J

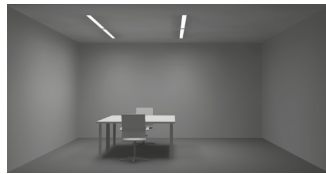
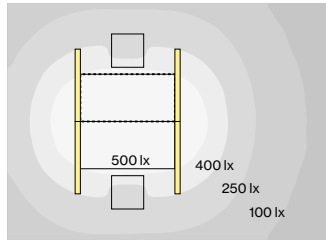
#### ASYMMETRIC traffic white, CRI ≥ 80, DALI-2

SYSTEM	LENGTH	LUM. FLUX	EFFICACY	ORDER CODE
15.6 W	613 mm	1660 lm	106 lm/W	0 5 1 - 8 0 1 2 :: 3 7 A
30.0 W	1221 mm	3320 lm	111 lm/W	0 5 1 - 8 0 1 4 :: 3 7 A
46.0 W	1830 mm	4990 lm	108 lm/W	0 5 1 - 8 0 1 6 :: 3 7 A
60.0 W	2438 mm	6650 lm	111 lm/W	0 5 1 - 8 0 1 8 :: 3 7 A

### Order options

COLOUR TEMPERATURE	COLOUR	RAL 9016
3000 K	5 traffic white	
4000 K	6	

## Planning Information



**LENO** trim, microprismatic,  
19:1W, 4000K

### ROOM VALUES

Room dimensions 5.4 × 4 × 2.8 m  
Reflection factor 0.7 | 0.5 | 0.2  
Maintenance factor 0.8

### CALCULATION SURFACE .....

Surface dimensions 1.6 × 0.8  
Surface height 0.75  
Average illuminance ( $E_m$ ) > 500 lx  
Uniformity ( $U_0$ ) > 0.6

### GLARE EVALUATION

Table Classification X=4H | Y=8H | S=0.25H  
UGR transversal ≤ 19  
UGR axial ≤ 19

## Mounting accessories (optional)



### END CAPS 1 pair

W-H (mm)

102-14

ORDER CODE

0 5 1 - 8 9 9 1 2 1 7



### LINEAR CONNECTOR recessed

TYPE

1 pair

10 pairs

L-W (mm)

48-19

48-19

ORDER CODE

0 5 1 - 8 9 9 0 1 1 0

0 5 1 - 8 9 9 0 1 1 0 · 1 0

## Mounting tools accessories (optional)

### DISMOUNTING TOOL

TYPE

vacuum cup

ORDER CODE

0 8 6 - 3 0 0 0 0

## Order options

### COLOUR TEMPERATURE

3000 K

4000 K



### COLOUR

traffic white

RAL 9016

5

6

# Jungheinrich Hauptverwaltung

Austria

**Arquitecto**  
reichardt+partner  
architekten

**Fotografía**  
walter schießwohl



## Productos utilizados



**LENO trimless**



**LENO trim system**



