

SETA

suspended

EN Luminaire housing from extruded aluminium profile, round design; extremely slim design (only \varnothing 61 mm); no visible screws; surface polished chrome or powder coated; pendant fitting with cable suspension; with integrated tool-less suspension height adjustment; spring clip attachment to the luminaire; freely positionable; incl. transparent feed; extruded profile for improved thermal management; high gloss reflector with faceted design; direct / indirect light distribution; indirect light component with integrated PC boards and high quality lens system for maximum, homogeneous ceiling illumination, optionally separately controllable; energy-efficient LEDs with very good colour rendering

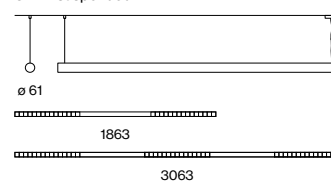
ES Cuerpo de perfil de aluminio con diseño redondo; forma extremadamente esbelta (solo \varnothing 61mm); sin tornillos visibles; superficie cromada pulida o superficie con recubierto de polvo; suspendido con cable; regulación de la altura sin necesitar herramientas; fijación en las lámparas por medio de enganches elásticos; ajustable de una manera sencilla; incluido cable de alimentación transparente; perfil extruido para una mejor gestión del calor; reflector de alto brillo con óptica facetada; característica de emisión directa / indirecta; componente de luz indirecta con pletinas propias y una óptica de lente de alta calidad para una claridad de techo máxima y homogénea, opcionalmente dotada de control independiente; LEDS de alta eficiencia que proporcionan una alta reproducción cromática

Quickinfo

3000 K, 4000 K, TW
 CRI \geq 80, 3 SDCM
 UGR \leq 16 / $65^\circ \leq 1500$ cd/m²
 L 1863 up to \downarrow 3540 / \uparrow 3400 lm
 L 3063 up to \downarrow 5310 / \uparrow 6810 lm
 up to 142 lm/W
 L90 @ 50 000 h
 DALI-2, DALI-2 sensor
 reflector (UGR \leq 16)

Types

SETA suspended



Colours



Light distribution



DiiA® standards
251, 252, 253



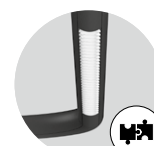
chrome
version available



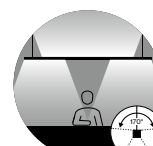
special end cap &
reflector design



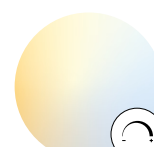
DIN EN 12464-1
UGR \leq 19



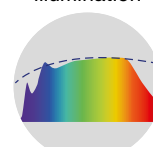
system
solution (p. 854)



glare-free direct
and 170° indirect
illumination



tunable white
2700-6500 K



CRI \geq 98
XPECTRUM

Order options

COLOUR TEMPERATURE

3000 K	5
4000 K	6
tunable white 2700–6500 K*	

*DALI-2 DT8

3000 K + TW 2700–6500 K*	
4000 K + TW 2700–6500 K*	

*DALI-2 DT8 (separately controllable)

CONTROL

DALI-2	3
DALI-2 D/I separately control.*	4
DALI-2 sensor	7

*not for tunable white 1863 mm

MATERIAL COLOUR

✓ chrome*	4
○ pure white RAL 9010	7
● jet black RAL 9005	8

*only for 1863 mm

REFLECTOR COLOUR

✓ chrome	R
● dark chrome*	B

*only for colour pure white and jet black

LIGHT OPTIC COVER

reflector (UGR ≤ 16)

Options on request

COLOUR RENDERING INDEX

CRI ≥ 90

CRI ≥ 98 XPECTRUM

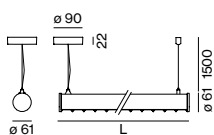
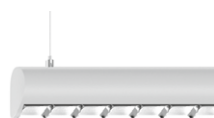
TUNABLE WHITE

direct light static 3000 K
or 4000 K and indirect light
tunable 2700–6500 K

MATERIAL COLOUR

grey

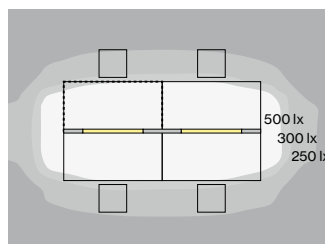
SETA suspended



DIRECT / INDIRECT POWER

SYS. POWER	COLOUR TEMP.	LUM. FLUX	L (mm)	ORDER CODE
50 W	3000 K ↓ 3250 / ↑ 3460 lm 4000 K ↓ 3580 / ↑ 3810 lm		1863	0 7 4 - 5 2 4 6 ▣ ▣ ▣
54 W (2 × DALI)	3000 K ↓ 3350 lm 2700–6500 K ↑ 3400 lm		1863	0 7 4 - 5 2 D 6 5 4 ▣ ▣
54 W (2 × DALI)	4000 K ↓ 3540 lm 2700–6500 K ↑ 3400 lm		1863	0 7 4 - 5 2 D 6 6 4 ▣ ▣
56 W (2 ×)	2700–6500 K ↑ 7030 lm		1863	0 7 4 - 5 2 4 6 D ▣ ▣ ▣
88 W	3000 K ↓ 4870 / ↑ 6910 lm 4000 K ↓ 5370 / ↑ 7630 lm		3063	0 7 4 - 5 2 4 9 ▣ ▣ ▣
90 W (2 × DALI)	3000 K ↓ 5020 lm 2700–6500 K ↑ 6810 lm		3063	0 7 4 - 5 2 D 9 5 4 ▣ ▣
90 W (2 × DALI)	4000 K ↓ 5310 lm 2700–6500 K ↑ 6810 lm		3063	0 7 4 - 5 2 D 9 6 4 ▣ ▣
93 W (2 ×)	2700–6500 K ↑ 12250 lm		3063	0 7 4 - 5 2 4 9 D ▣ ▣ ▣

Technical data



SETA suspended, 88 W, 4000 K
direct/indirect power

ROOM VALUES

Room dimensions	5.4 × 4 × 2.8 m
Reflection factor	0.7 0.5 0.2
Maintenance factor	0.8
Mounting height	2.25 m

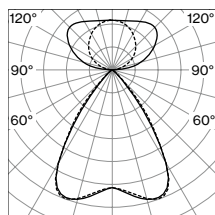
CALCULATION SURFACE

Surface dimensions	1.6 × 0.8
Surface height	0.75
Average illuminance (E _m)	> 500 lx
Uniformity (U ₀)	> 0.6

GLARE EVALUATION

Table Classification X=4H Y=8H S=0.25H	
UGR transversal	≤ 19
UGR axial	≤ 19
65° < 1500 cd/m²	

Light distribution



reflector (UGR ≤ 16)
direct/indirect power

LUMINOUS FLUX value calculated for
CRI ≥ 80, colour white, reflector chrome;
reflector black -29 %