



SASSO 60 square wallwasher

recessed 1 lamp

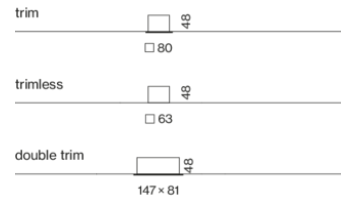
EN Square recessed spotlight; installation without tools in mounting set (trimless or with trim) with ball catch system; surface lacquered; installation possible in different housings; asymmetric radiation characteristic; with specially computed, asymmetrical reflector for homogeneous lighting intensity; high quality reflector with micro-faceted, aluminum-vaporised surface; no multiple shadows; efficient LEDs with very good colour rendering

DE Quadratischer Einbaustrahler; werkzeuglose Montage im Montageset (randlos oder mit umlaufendem Rand) durch Kugelschnappsystem; Oberfläche lackiert; Einbau in unterschiedlichen Gehäusen möglich; asymmetrische Abstrahlcharakteristik; mit speziell berechnetem, asymmetrischem Reflektor für homogene vertikale Beleuchtungsstärken; hochwertiger Reflektor mit mikrofacettierter, aluminiumbedampfter Oberfläche; keine Mehrfachschatten; effiziente LEDs mit sehr guter Farbwiedergabe

Quickinfo

2700 K, 3000 K, 3500 K, 4000 K
 CRI ≥ 90 / 2 SDCM (initial MacAdam)
 up to 117 lm/W
 L85 / 50000 h
 DALI-2, non DIM
 front IP20

Types



Colour



Mounting set



Light distributions



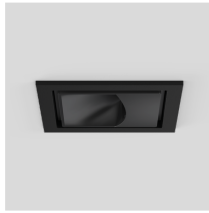
wallwasher/
wallwasher floor
inset



60 mm
recessed depth



CRI ≥ 95 2
SDCM
(optional)

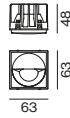


SASSO 60 square wallwasher



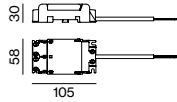
WALLWASHER CRI ≥ 90

FIXTURE	COLOUR TEMP.	LUM. FLUX	EFFICACY	ORDER CODE
8.9 W,	2700 K	1030 lm	117 lm/W	0 4 8 - 2 6 5 1 9 1 <input checked="" type="checkbox"/> A
36 Vf,	3000 K	972 lm	110 lm/W	0 4 8 - 2 6 5 1 0 1 <input checked="" type="checkbox"/> A
250 mA	3500 K	1010 lm	114 lm/W	0 4 8 - 2 6 5 1 2 1 <input checked="" type="checkbox"/> A
	4000 K	972 lm	110 lm/W	0 4 8 - 2 6 5 1 1 1 <input checked="" type="checkbox"/> A



The data values for the luminaire luminous flux may differ for specific order options by -8%. Luminous flux value refers to colour traffic white, matt silver.

Electrical mounting accessories (optional)

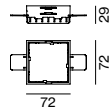


THROUGH WIRING CONNECTION BOX

TYPE	L-W-H (mm)	ORDER CODE
non DIM cable \varnothing 4 – 12 mm	105-58-30	0 0 5 - 2 5 3 1 1 1 0
DALI cable \varnothing 4 – 12 mm	105-58-30	0 0 5 - 2 5 5 1 1 1 0

Linect®-Ready

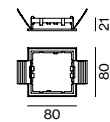
Mounting accessories (required)



MOUNTING SET trimless for plasterboard ceilings

COLOUR	PLASTERBOARD CEILING THICKNESS	L-W-H (mm)	ORDER CODE
traffic white	12.5/15/25 mm	72-72-29	0 4 8 - 2 6 9 7 1 1 7

120
DALI-2
145
loop through
function

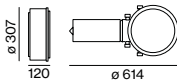


MOUNTING SET with trim 1 lamp for intermediate ceilings, 2-25 mm

COLOUR	L-W-H (mm)	ORDER CODE
traffic white	80-80-21	0 4 8 - 2 6 9 7 3 1 7
jet black	80-80-21	0 4 8 - 2 6 9 7 3 1 8
white aluminium	80-80-21	0 4 8 - 2 6 9 7 3 1 G

100
DALI-2
125
loop through
function

Mounting accessories (optional)



PRIMED CONCRETE MOUNTING HOUSING

L-W-H (mm)	ORDER CODE
614-307-120	0 4 8 - 2 6 9 5 1 1 0

order mounting set separately

Order options

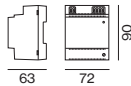
COLOUR	<input checked="" type="checkbox"/>	COLOUR	
jet black RAL 9005	1	white aluminium	RAL 9006
matt silver	4		
traffic white RAL 9016	7		
gold dust RAL 260-M	9		

Electrical accessories (required)

POWER SUPPLY 250 mA, 198-264 V AC, PC2

TYPE	EFFICIENCY	L-W-H (mm)	ORDER CODE
10 W non DIM	η 80 %	65-39-20	0 0 2 - 9 0 7 4 2
15 W DALI-2	η 87 %	165-29-21	0 0 2 - 9 0 7 4 8

Electrical accessories (optional)



DIN RAIL POWER SUPPLY BASIC 48 V

TYPE	INPUT VOLTAGE	EFFICIENCY	L-W-H (mm)	ORDER CODE
160 W PC2	220-240 V AC	η 94 %	72-90-63	0 0 5 - 6 5 2 0 2 1 0

Lifetime >100.000h @ 120W, 45°C ambient temp., cascable max. 3 devices

DIN RAIL LED DRIVER

TYPE	L-W-H (mm)	ORDER CODE
DALI-2 DT6 1-2 addresses / DT8 1 adress	36-88-59	0 0 5 - 6 1 2 1 0 3 0

200 -1050mA settable const. current | 2×42W | 48V DC | U OUT 10–40V SELV

POWER SUPPLY PRE-WIRED with junction box 198-264 V AC, PC2

TYPE	EFFICIENCY	ORDER CODE
300 mA 15 W DALI-2	η 87 %	0 0 2 - 9 0 7 9 0 A
250 mA 15 W DALI-2	η 87 %	0 0 2 - 9 0 7 4 8 A
300 mA 15 W non DIM	η 84 %	0 0 2 - 9 0 7 7 1 A
250 mA 10 W non DIM	η 80 %	0 0 2 - 9 0 7 4 2 A

POWER SUPPLY with loop through function DALI-2, 15 W, 198-264 V AC, PC2

TYPE	EFFICIENCY	L-W-H (mm)	ORDER CODE
300 mA	η 87 %	185-30-21	0 0 2 - 9 0 7 7 0
250 mA	η 87 %	185-30-21	0 0 2 - 9 0 7 4 7

Order options

COLOUR	<input checked="" type="checkbox"/>	COLOUR	
jet black RAL 9005	1	white aluminium	RAL 9006
matt silver	4		
traffic white RAL 9016	7		
gold dust RAL 260-M	9		