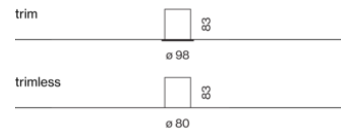


Quickinfo

2700 K, 3000 K, 4000 K, colour warm dimming 1800 - 2700 K
 CRI \geq 90, CRI \geq 95 / 2 SDCM (initial MacAdam), 3 SDCM (initial MacAdam), 4 SDCM (initial MacAdam)
 UGR \leq 10, UGR \leq 19
 up to 103 lm/W
 L80 / 50000 h, L85 / 50000 h, L90 / 50000 h
 DALI-2, non DIM
 front IP20

Types



Colour



Mounting set



Light distributions



SASSO PRO 80 adjustable offset square

recessed

EN Round recessed spotlight in die-cast aluminium; installation without tools in mounting set with ball catch system; surface powder coated; with trim (square); light inset rotatable and tiltable; offset lighting level; optical attachments available as accessories; with optional high-quality lens system with precise radiation characteristic; and high-quality reflector with spherical facet effect design, precise radiation characteristic with two different beam angles; installed and exchanged without tools; COB (Chip on Board) technology or high power LEDs for maximum efficiency; no multiple shadows; efficient LEDs with very good colour rendering

DE Runder Einbaustrahler aus Aluminiumdruckguss; werkzeuglose Montage im Montageset durch Kugelschnappsystem; Oberfläche pulverbeschichtet; mit umlaufendem Rand (quadratisch); Lichteinsatz dreh- und schwenkbar; zurückversetzte Leuchtenebene; optische Aufsätze sind als Zubehör erhältlich; wahlweise mit hochwertiger Linsenoptik mit präziser Abstrahlcharakteristik; bzw. hochwertiger Reflektor mit sphärischer Facettenoptik, präzise Abstrahlcharakteristik mit zwei verschiedenen Ausstrahlwinkeln; werkzeuglos einsetz- bzw. austauschbar; mit COB (Chip on Board) Technologie bzw. High-Power-LEDs für höchste Effizienz; keine Mehrfachschatten; effiziente LEDs mit sehr guter Farbwiedergabe



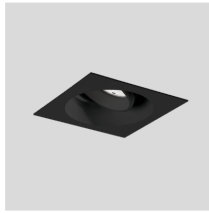
DiA® standards
 251, 252, 253



rotatable 360°,
 tiltable 35°



Colour Warm
 Dimming 1800 –
 2700 K



SASSO PRO 80 adjustable



SUPER SPOT 8°, CRI ≥ 90, non DIM

SYSTEM	COLOUR TEMP.	LUM. FLUX	EFFICACY	ORDER CODE
7.0 W	2700 K	388 lm	55 lm/W	0 4 8 - 2 3 1 0 4 1 <input checked="" type="checkbox"/> V
	3000 K	379 lm	54 lm/W	0 4 8 - 2 3 1 0 5 1 <input checked="" type="checkbox"/> V
	4000 K	408 lm	58 lm/W	0 4 8 - 2 3 1 0 6 1 <input checked="" type="checkbox"/> V



MEDIUM 26°,

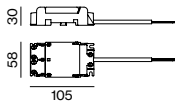
SYSTEM	COLOUR TEMP.	LUM. FLUX	EFFICACY	ORDER CODE
6.5 W	CWD, CRI ≥ 95	377 lm	58 lm/W	0 4 8 - 2 3 1 0 E 3 <input checked="" type="checkbox"/> M
7.5 W	2700 K, CRI ≥ 90	721 lm	96 lm/W	0 4 8 - 2 3 1 0 4 1 <input checked="" type="checkbox"/> M
	3000 K, CRI ≥ 90	757 lm	101 lm/W	0 4 8 - 2 3 1 0 5 1 <input checked="" type="checkbox"/> M
	4000 K, CRI ≥ 90	765 lm	102 lm/W	0 4 8 - 2 3 1 0 6 1 <input checked="" type="checkbox"/> M
12.2 W	2700 K, CRI ≥ 90	1010 lm	83 lm/W	0 4 8 - 2 3 1 2 4 <input checked="" type="checkbox"/> M
	3000 K, CRI ≥ 90	1050 lm	86 lm/W	0 4 8 - 2 3 1 2 5 <input checked="" type="checkbox"/> M
	4000 K, CRI ≥ 90	1120 lm	92 lm/W	0 4 8 - 2 3 1 2 6 <input checked="" type="checkbox"/> M

FLOOD 37°, CRI ≥ 90

SYSTEM	COLOUR TEMP.	LUM. FLUX	EFFICACY	ORDER CODE
7.5 W	2700 K	728 lm	97 lm/W	0 4 8 - 2 3 1 0 4 1 <input checked="" type="checkbox"/> F
	3000 K	765 lm	102 lm/W	0 4 8 - 2 3 1 0 5 1 <input checked="" type="checkbox"/> F
	4000 K	773 lm	103 lm/W	0 4 8 - 2 3 1 0 6 1 <input checked="" type="checkbox"/> F
12.2 W	2700 K	1020 lm	84 lm/W	0 4 8 - 2 3 1 2 4 <input checked="" type="checkbox"/> F
	3000 K	1060 lm	87 lm/W	0 4 8 - 2 3 1 2 5 <input checked="" type="checkbox"/> F
	4000 K	1130 lm	93 lm/W	0 4 8 - 2 3 1 2 6 <input checked="" type="checkbox"/> F

Electrical mounting accessories (optional)

THROUGH WIRING CONNECTION BOX

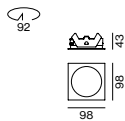


TYPE	L-W-H (mm)	ORDER CODE
non DIM cable \varnothing 4 – 12 mm	105-58-30	0 0 5 - 2 5 3 1 1 1 0
DALI cable \varnothing 4 – 12 mm	105-58-30	0 0 5 - 2 5 5 1 1 1 0

Linect®-Ready

Mounting accessories (required)

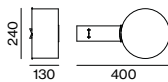
MOUNTING SET with trim 5-25 mm, for intermediate ceilings



COLOUR	L-W-H (mm)	ORDER CODE
traffic white	98-98-43	0 5 2 - 1 9 5 2 3 1 7
jet black	98-98-43	0 5 2 - 1 9 5 2 3 1 8

Mounting accessories (optional)

PRIMED CONCRETE MOUNTING HOUSING



L-W-H (mm)	ORDER CODE
240-400-130	0 5 2 - 1 9 1 4 3 2 0

order mounting set separately

Order options

CONTROL	COLOUR	
non DIM	1 traffic white RAL 9016	7
DALI-2	3 jet black RAL 9005	8

Optical accessories (optional)**HONEYCOMB LOUVER**

COLOUR	Ø-H (mm)	ORDER CODE
traffic white	54-11	0 4 8 - 2 0 9 1 3 1 7
jet black	54-11	0 4 8 - 2 0 9 1 3 1 8

LINEAR PRISMATIC LENS

COLOUR	Ø-H (mm)	ORDER CODE
traffic white	54-11	0 4 8 - 2 0 9 2 3 1 7
jet black	54-11	0 4 8 - 2 0 9 2 3 1 8

**SNOOT**

COLOUR	Ø-H (mm)	ORDER CODE
traffic white	54-25	0 4 8 - 2 0 9 1 1 1 7
jet black	54-25	0 4 8 - 2 0 9 1 1 1 8

**SNOOT WITH HONEYCOMB LOUVER**

COLOUR	Ø-H (mm)	ORDER CODE
traffic white	54-25	0 4 8 - 2 0 9 1 2 1 7
jet black	54-25	0 4 8 - 2 0 9 1 2 1 8

Order options

CONTROL		COLOUR	
non DIM	1	traffic white RAL 9016	7
DALI-2	3	jet black RAL 9005	8