



LENO

trim system

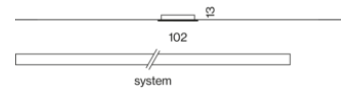
EN Low profile recessed channel; suitable for installation in 12.5mm ceilings, with trim; suitable for wall or ceiling mounting; designed for continuous lighting systems; surface powder coated; easy mounting without need to cut the sub-structure; fall-safe light inset made of extruded aluminium profile, can be inserted in the canal without tools by magnetic holders; side coupled light, directed downwards by LGP body (Light Guiding Prism) and highly efficient reflector; homogeneously illuminated, satinised (flush or jut-out) or microprismatic PMMA cover; optional with asymmetric light distribution; energy-efficient LEDs with very good colour rendering; incl. external converter for ceiling insertion

DE Extrem flacher Einbaukanal; geeignet für den Einbau in 12,5mm Decken, mit umlaufendem Rand; geeignet für die Wand- oder Deckenmontage; ausgelegt für durchgehende Lichtsysteme; Oberfläche pulverbeschichtet; einfache Montage ohne Schneiden der Unterkonstruktion; absturzesicherer Lichteinsatz aus stranggepresstem Aluminiumprofil werkzeuglos mittels Magnethalter in Kanal einsetzbar; seitlich eingekoppeltes Licht durch LGP-Body (Light-Guiding-Prism) und hocheffizientem Reflektor nach unten gelenkt; homogen ausgeleuchtete, satinierte (bündig oder herausragend) oder mikroprismatische Abdeckung aus PMMA; optional mit asymmetrischer Lichtverteilung; energieeffiziente LEDs mit sehr guter Farbwiedergabe; inkl. externem Konverter für Deckeneinwurf

Quickinfo

3000 K, 4000 K
 CRI \geq 80 / 3 SDCM (initial MacAdam)
 UGR \leq 19
 up to 140 lm/W
 L90 / 50000 h
 DALI-2
 Asymmetric Wallwasher, High Performance Opal, Jut-Out, Microprismatic
 IP40 / back IP20 / PC2 / 220-240 V

Types



Light distributions



DiiA® standards
 251, 252, 253

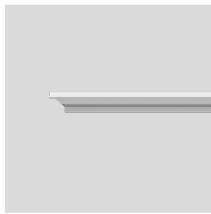


microprismatic
 UGR \leq 19



quick
 installation

LENO TRIM SYSTEM



INSTALLATION CHANNEL with trim

L·W·H (mm)

613-102-14

1221-102-14

1830-102-14

2438-102-14

ORDER CODE

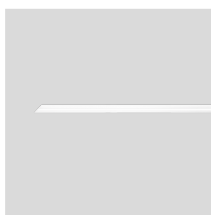
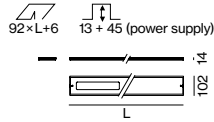
0 5 1 - 8 9 1 0 0 6 7

0 5 1 - 8 9 1 0 1 2 7

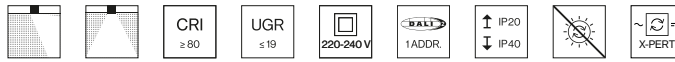
0 5 1 - 8 9 1 0 1 8 7

0 5 1 - 8 9 1 0 2 4 7

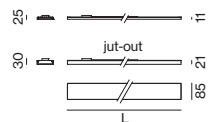
order installation channel, light inset + mounting accessories separately



LIGHT INSET



MICROPRISMATIC traffic white, CRI ≥ 80, DALI-2



SYSTEM	LENGTH	LUM. FLUX	EFFICACY	ORDER CODE
9.9 W	613 mm	1230 lm	124 lm/W	0 5 1 - 8 0 1 2 :: 3 7 G
19.1 W	1221 mm	2450 lm	128 lm/W	0 5 1 - 8 0 1 4 :: 3 7 G
28.6 W	1830 mm	3680 lm	129 lm/W	0 5 1 - 8 0 1 6 :: 3 7 G
37.0 W	2438 mm	4910 lm	133 lm/W	0 5 1 - 8 0 1 8 :: 3 7 G

OPAL traffic white, CRI ≥ 80, DALI-2

SYSTEM	LENGTH	LUM. FLUX	EFFICACY	ORDER CODE
9.9 W	613 mm	1300 lm	131 lm/W	0 5 1 - 8 0 1 2 :: 3 7 H
19.1 W	1221 mm	2590 lm	136 lm/W	0 5 1 - 8 0 1 4 :: 3 7 H
28.6 W	1830 mm	3890 lm	136 lm/W	0 5 1 - 8 0 1 6 :: 3 7 H
37.0 W	2438 mm	5190 lm	140 lm/W	0 5 1 - 8 0 1 8 :: 3 7 H

The data values for the luminous flux may differ for specific order options by -6%. Luminous flux value refers to colour temperature 4000 K.

OPAL JUT-OUT traffic white, CRI ≥ 80, DALI-2

SYSTEM	LENGTH	LUM. FLUX	EFFICACY	ORDER CODE
9.9 W	613 mm	1240 lm	125 lm/W	0 5 1 - 8 0 1 2 :: 3 7 J
19.1 W	1221 mm	2490 lm	130 lm/W	0 5 1 - 8 0 1 4 :: 3 7 J
28.6 W	1830 mm	3730 lm	130 lm/W	0 5 1 - 8 0 1 6 :: 3 7 J
37.0 W	2438 mm	4970 lm	134 lm/W	0 5 1 - 8 0 1 8 :: 3 7 J

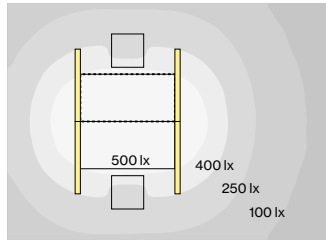
ASYMMETRIC traffic white, CRI ≥ 80, DALI-2

SYSTEM	LENGTH	LUM. FLUX	EFFICACY	ORDER CODE
15.6 W	613 mm	1660 lm	106 lm/W	0 5 1 - 8 0 1 2 :: 3 7 A
30.0 W	1221 mm	3320 lm	111 lm/W	0 5 1 - 8 0 1 4 :: 3 7 A
46.0 W	1830 mm	4990 lm	108 lm/W	0 5 1 - 8 0 1 6 :: 3 7 A
60.0 W	2438 mm	6650 lm	111 lm/W	0 5 1 - 8 0 1 8 :: 3 7 A

Order options

COLOUR TEMPERATURE	COLOUR	RAL 9016
3000 K	5 traffic white	
4000 K	6	

Planning Information



LENO trim, microprismatic,
19:1W, 4000K

ROOM VALUES

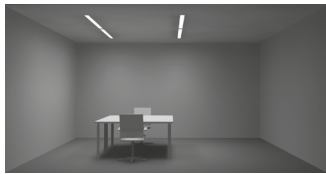
Room dimensions 5.4 × 4 × 2.8 m
Reflection factor 0.7 | 0.5 | 0.2
Maintenance factor 0.8

CALCULATION SURFACE

Surface dimensions 1.6 × 0.8
Surface height 0.75
Average illuminance (E_m) > 500 lx
Uniformity (U_0) > 0.6

GLARE EVALUATION

Table Classification X=4H | Y=8H | S=0.25H
UGR transversal ≤ 19
UGR axial ≤ 19



Mounting accessories (optional)



END CAPS 1 pair

W-H (mm)
102-14

ORDER CODE

0 5 1 - 8 9 9 1 2 1 7



LINEAR CONNECTOR recessed

TYPE
1 pair
10 pairs

L-W (mm)
48-19
48-19

ORDER CODE

0 5 1 - 8 9 9 0 1 1 0

0 5 1 - 8 9 9 0 1 1 0 · 1 0

Mounting tools accessories (optional)

DISMOUNTING TOOL

TYPE
vacuum cup

ORDER CODE

0 8 6 - 3 0 0 0 0

Order options

COLOUR TEMPERATURE

3000 K

4000 K



COLOUR

traffic white

RAL 9016

5
6

Jungheinrich Hauptverwaltung

Germany

Architect
reichardt+partner
architekten

Photographer
walter schießwohl



Used products



LENO trim system



LENO trimless



