

# FINA SUPPORT opal

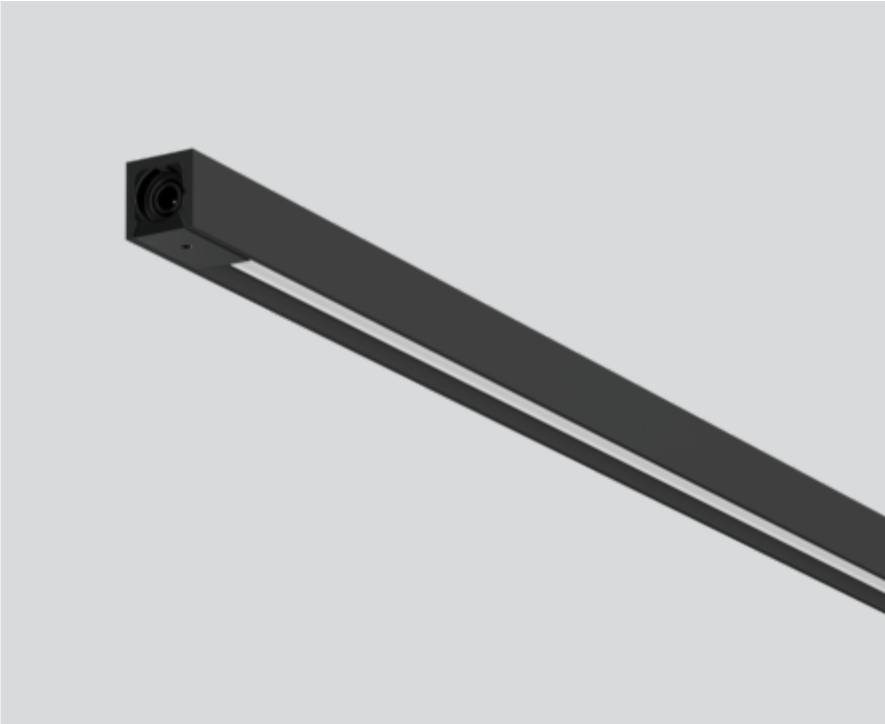
011-129AF118O



Project / Type

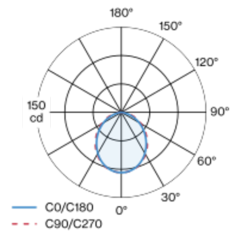
Notes

Count / Date



Miniature rectangular lamp made of aluminium; angular design; surface lacquered in black; plug and play electrical connector system for toolless mounting; different mechanical and electrical poles available - for flexible system design (available as an accessory); completely homogeneously illuminated, satinised PMMA cover; light colour 4000 K; binning initial MacAdam  $\leq 3$  SDCM; CRI  $\geq 97$ ; min. 85% of luminous flux after 50000 operating hours; energy efficient LEDs with high CRI; light inset rotatable; degree of protection IP20; PC3; 24 V; accessories are listed separately; light source replaceable by an authorized professional;

## Light distribution



## Product drawing



### General

Showcase | Standing

black | RAL 9021<sup>1</sup>

IP20

Interior

268 lm

1310 lm/m

optical inset 81 lm/W<sup>2</sup>

### LED

4000 K

CRI  $\geq 97$

L85 / 50000 h

initial MacAdam  $\leq 3$  SDCM

R<sub>g</sub>: 100 | R<sub>f</sub>: 96 | R<sub>(1-15)</sub>: 98

MR 0.86 | MDER 0.78

### Optical

Opal | opal (lambertsch)

### Electrical

excl. driver

PC3 | 24 V

fixture 4.4 W

optical inset 3.3 W

22 W/m

24 V

### Physical

length 236 mm | width 9 mm | height 9 mm

0.04 kg

<sup>1</sup> RAL code <sup>2</sup> incl. consideration of optical losses

## Installation instructions

