

FINA SUPPORT opal

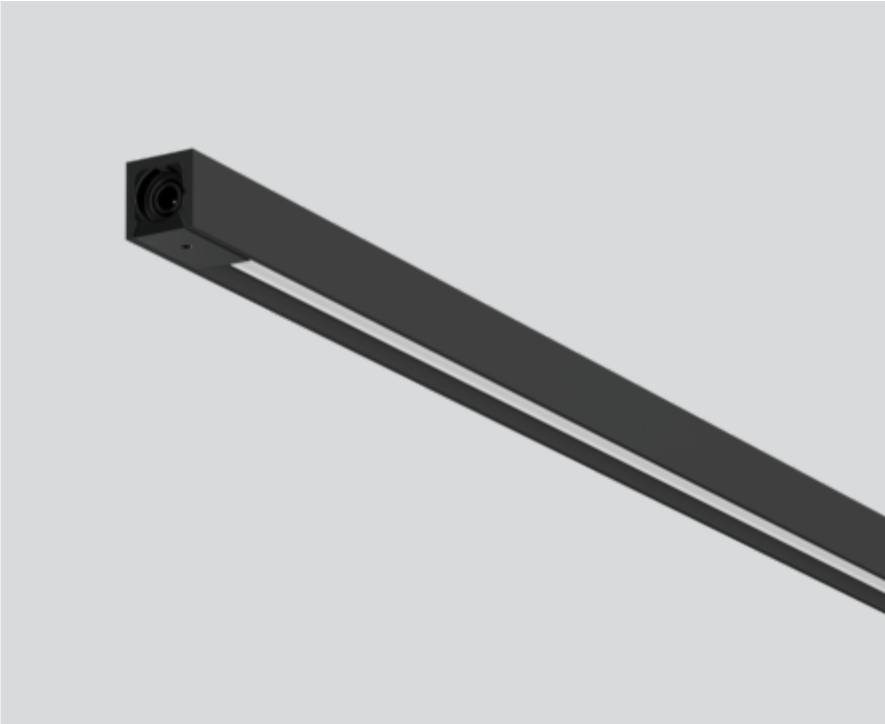
011-129BC018O



Project / Type

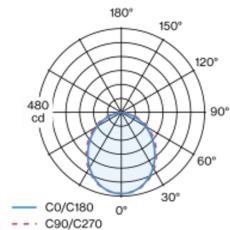
Notes

Count / Date



Miniature rectangular lamp made of aluminium; angular design; surface lacquered in black; plug and play electrical connector system for toolless mounting; different mechanical and electrical poles available - for flexible system design (available as an accessory); completely homogeneously illuminated, satinised PMMA cover; light colour 3000 K; binning initial MacAdam ≤ 3 SDCM; CRI ≥ 97 ; min. 85% of luminous flux after 50000 operating hours; energy efficient LEDs with high CRI; light inset rotatable; degree of protection IP20; PC3; 24 V; accessories are listed separately; light source replaceable by an authorized professional;

Light distribution



Product drawing



General

Showcase | Standing

black | RAL 9021¹

IP20

Interior

1180 lm

1200 lm/m

optical inset 73 lm/W²

LED

3000 K

CRI ≥ 97

L85 / 50000 h

initial MacAdam ≤ 3 SDCM

R_g: 99 | R_r: 96 | R_{t(1-5)}: 97

MR 0.68 | MDER 0.61

Optical

Opal | opal (lambertsch)

Electrical

excl. driver

PC3 | 24 V

fixture 21.2 W

optical inset 16.1 W

22 W/m

24 V

Physical

length 1041 mm | width 9 mm | height 9 mm

0.1 kg

¹ RAL code ² incl. consideration of optical losses

Installation instructions

