

# FINA SUPPORT opal 30°

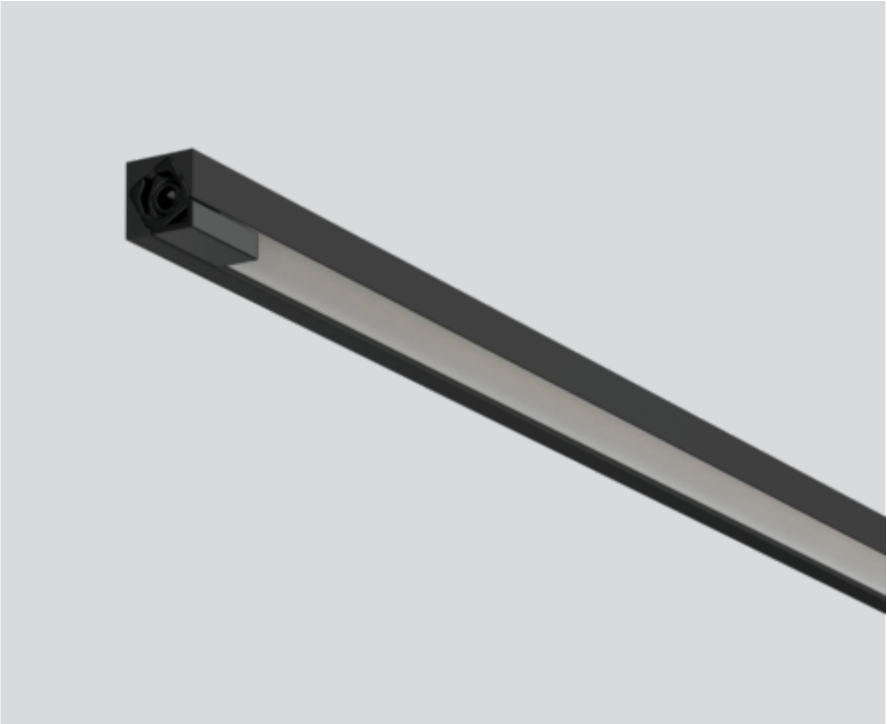
011-139AW218O



Project / Type

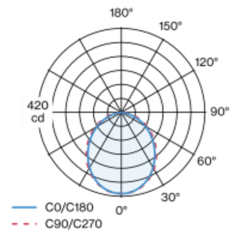
Notes

Count / Date



Miniature rectangular lamp made of aluminium; angular design; surface lacquered in black; plug and play electrical connector system for toolless mounting; different mechanical and electrical poles available - for flexible system design (available as an accessory); completely homogeneously illuminated, satinised PMMA cover; light colour 3500 K; binning initial MacAdam  $\leq 3$  SDCM; CRI  $\geq 97$ ; min. 85% of luminous flux after 50000 operating hours; energy efficient LEDs with high CRI; light inset rotatable; degree of protection IP20; PC3; 24 V; accessories are listed separately; light source replaceable by an authorized professional;

## Light distribution



## Product drawing



### General

Showcase | Standing

black | RAL 9021<sup>1</sup>

IP20

Interior

1030 lm

1310 lm/m

optical inset 81 lm/W<sup>2</sup>

### LED

3500 K

CRI  $\geq 97$

L85 / 50000 h

initial MacAdam  $\leq 3$  SDCM

R<sub>g</sub>: 100 | R<sub>f</sub>: 97 | R<sub>f(1-5)</sub>: 96

MR 0.71 | MDER 0.64

### Optical

Opal | opal (lambertsch)

### Electrical

excl. driver

PC3 | 24 V

fixture 16.7 W

optical inset 12.8 W

21 W/m

24 V

### Physical

length 831 mm | width 9 mm | height 9 mm

<sup>1</sup> RAL code <sup>2</sup> incl. consideration of optical losses

## Installation instructions

