

# POWER SUPPLY PRE- WIRED

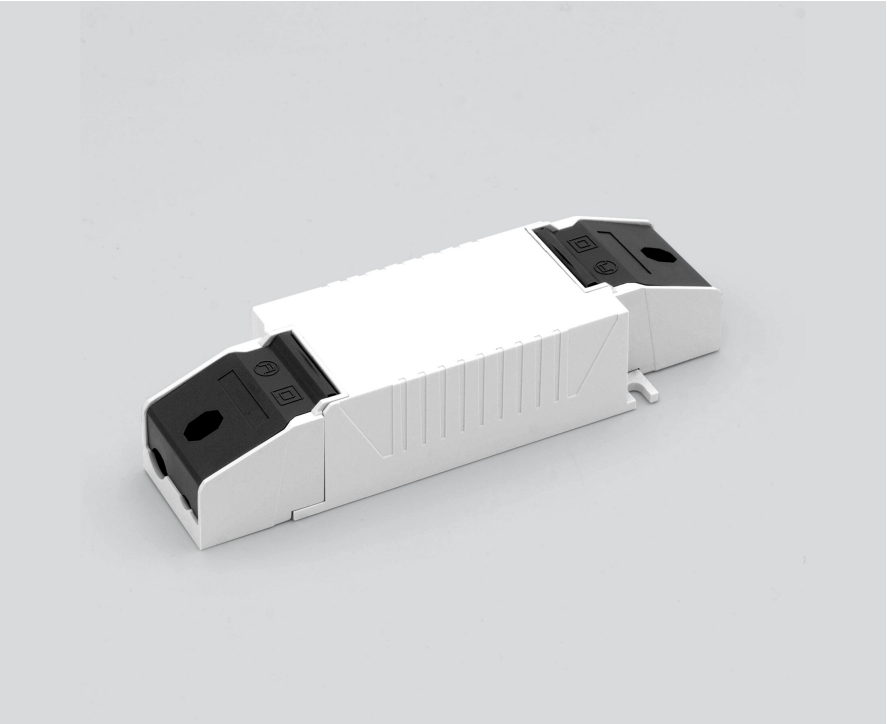
002-90748A



Project / Type

Notes

Count / Date



**General**  
with junktion box

**Electrical**  
DALI-2  
PC2  
15 W  
Push Dim, Dim Dali 2  
min 198 V  
max 264 V  
 $\eta$  87 %  
Constant Current  
min 50 Hz  
max 60 Hz  
constant current 250 mA



# POWER SUPPLY PRE- WIRED

002-90748A



Project / Type

Notes

Count / Date

### Circuit Breaker Types

Automatic Circuit Breaker Type	Number of Converters
B10	72
B16	115
C10	106
C16	170

