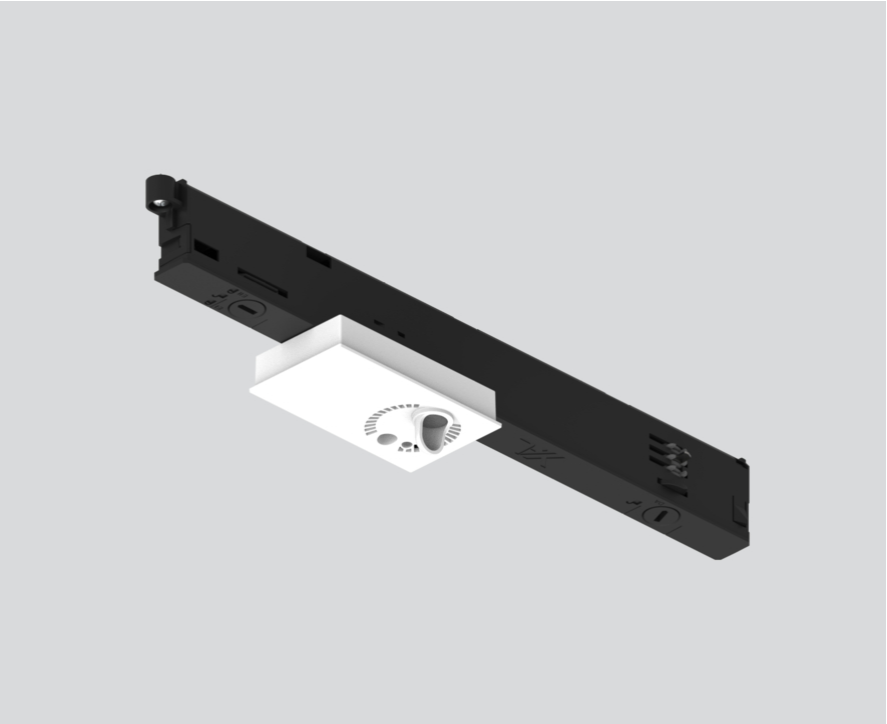


# SENSE SENSOR

MOVE IT PRO  
086-5218127



Project / Type	
Notes	
Count / Date	



### General

brightness, presence, temperature, sound  
pressure, humidity, CO2  
traffic white | RAL 9016 <sup>1</sup>  
IP20

### Electrical

DALI-2  
PC3 | 9.5-22.5V

### Physical

length 260 mm | width 43 mm | height 46 mm

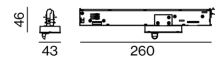
<sup>1</sup> RAL code

### Installation instructions



Sensor inset; SENSE (brightness, presence, temperature, humidity, air quality and noise level sensor); for lighting systems; surface traffic white; inset can be installed flexibly and without tools; flush with profile system; degree of protection IP20; PC3; 9.5-22.5V; DALI-2 control;

### Product drawing



[“086-5218127”] The technical data represent rated values for an ambient temperature of 25°C. The data values for the luminous flux are initially subject to a tolerance of +/- 10%, those for the electrical connected load are initially subject to a tolerance of +/- 10%, and those for the colour temperature are initially subject to a tolerance of +/- 150 K. No liability is assumed for typographical or printing errors. The general terms and conditions of XAL GmbH apply.  
© XAL GmbH · Auer-Welsbach-Gasse 36 · 8055 Graz · Austria · [www.xal.com](http://www.xal.com)