

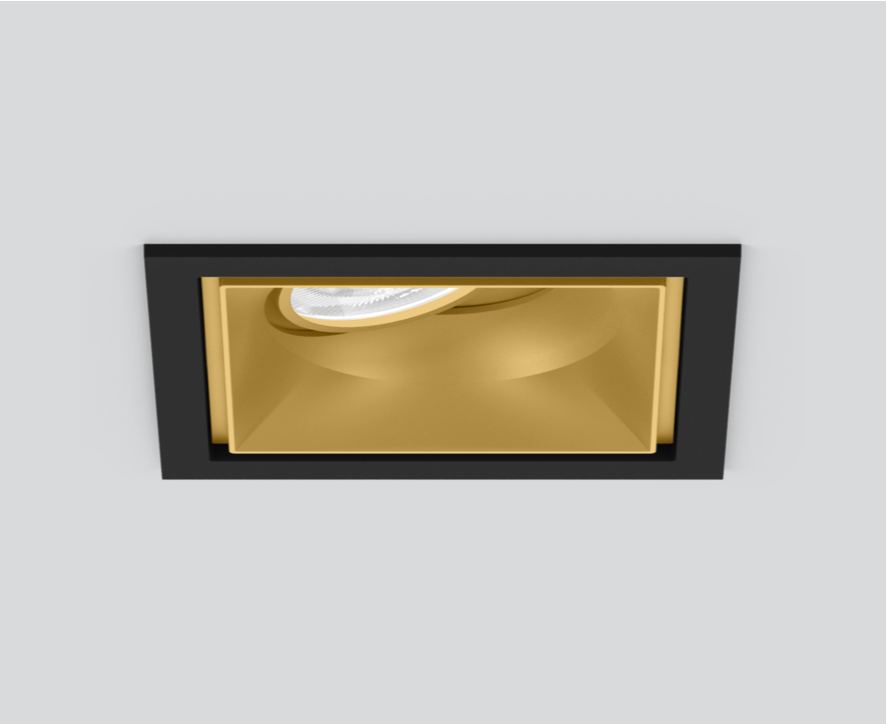
SASSO 100 square adjustable

trim

048-2730919M 048-2797318 002-90767

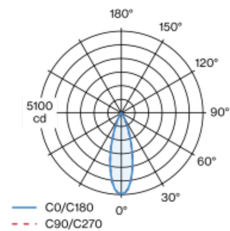


| |
|----------------|
| Project / Type |
| Notes |
| Count / Date |

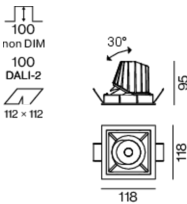


Recessed square spotlight in die-cast aluminium; 1 lamp; surface gold; 30° tiltable; installation without tools in mounting set due to patented ball catch system; square installation housing; with trim jet black; suitable for ceiling thickness of 2-25 mm; passive cooling of the LEDs through improved heat sink geometry; with COB (Chip on Board) technology for maximum efficiency; no appearance of multiple shadows; light colour 2700 K; binning initial MacAdam ≤ 2 SDCM; CRI ≥ 90 ; min. 80% of luminous flux after 50000 operating hours; energy efficient LEDs with high CRI; incl. high quality lens system; precise radiation characteristic with 31° beam; UGR ≤ 13 ; VDU compatible workplace luminaire according to DIN EN 12464-1; luminance above 65° ≤ 1500 cd/m²; degree of protection from below IP40 (from above IP20); PC2; 220-240 V; incl. DALI-2 converter; through wiring connection box, 3-pole or 5-pole, available as an accessory; accessories are listed separately; light source replaceable by an authorized professional; control gear replaceable by an authorized professional;

Light distribution



Product drawing



General

| |
|-------------------------------|
| Ceiling Recessed |
| tilt max 30° |
| gold RAL 260-M ¹ |
| Mounting set jet black |
| front IP40 back IP20 |
| 1680 lm |
| fixture 110 lm/W ² |

LED

| |
|--|
| 2700 K |
| CRI ≥ 90 |
| L80 / 50000 h |
| initial MacAdam ≤ 2 SDCM |
| R _g : 97 R _r : 91 R _{t(1-5)} : 87 |
| MR 0.52 MDER 0.47 |

Optical

| |
|---|
| medium beam angle 31° |
| UGR ≤ 13 $\geq 65^\circ$ ≤ 1500 cd/m ² |
| PstLM ≤ 1.0 ³ SVM ≤ 0.4 ³ |

Electrical

| |
|--------------------------------|
| DALI-2 1 DALI Addr. |
| PC2 220-240 V |
| system 17.9 W fixture 15.2 W |
| 36 Vf 450 mA |

Physical

| |
|---|
| trim |
| length 118 mm width 118 mm height 95 mm |
| 0.57 kg |

Cutout

| |
|--|
| length 112 mm width 112 mm |
| min. ceiling thickness 2 mm max. ceiling thickness 25 mm |
| recessed depth 100 mm |

¹ RAL code
² incl. consideration of optical losses & internal control unit losses
³ Value of containing product at full load (undimmed)

Installation instructions



Lighting calculator

