

# SASSO 100 square wallwasher

trim

048-2750219A 048-279731G 002-90767



Project / Type

Notes

Count / Date



## General

Ceiling , Recessed

gold , RAL 260-M<sup>1</sup>

Mounting set white aluminium

IP20

1660 lm

fixture 105 lm/W<sup>2</sup>

## LED

3500 K

CRI ≥ 90

L85 / 50000 h

initial MacAdam ≤ 3 SDCM

R<sub>g</sub>: 96 , R<sub>f</sub>: 90 , R<sub>(1-15)</sub>: 91

MR 0.74

MDER 0.67

## Optical

wallwasher

PstLM ≤ 1.0<sup>3</sup>

SVM ≤ 0.4<sup>3</sup>

## Electrical

DALI-2

220-240 V

system 18.6 W

fixture 15.8 W

36 Vf

450 mA

PC2

## Physical

trim

length 118 mm

width 118 mm

height 96 mm

0.77 kg

## Cutout

length 112 mm

width 112 mm

min. ceiling thickness 2 mm

max. ceiling thickness 25 mm

recessed depth 120 mm

<sup>1</sup> RAL code

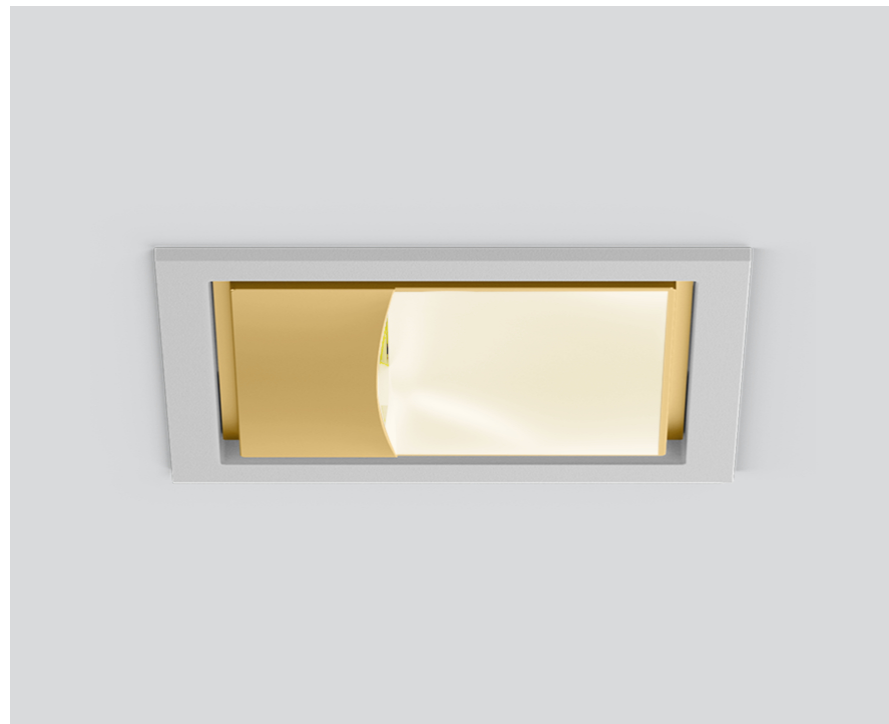
<sup>2</sup> incl. consideration of optical losses & internal control unit losses

<sup>3</sup> Value of containing product at full load (undimmed)

## Installation instructions

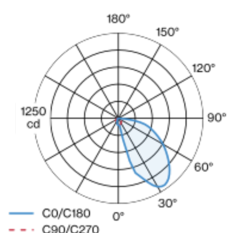


## Lighting calculator



Recessed square spotlight in die-cast aluminium; 1 lamp; surface gold; installation without tools in mounting set due to patented ball catch system; square installation housing; with trim white aluminium; suitable for ceiling thickness of 2-25 mm; passive cooling of the LEDs through improved heat sink geometry; no multiple shadows; light colour 3500 K; binning initial MacAdam ≤ 3 SDCM; CRI ≥ 90; min. 85% of luminous flux after 50000 operating hours; energy efficient LEDs with high CRI; with specially computed, asymmetrical reflector for homogeneous lighting intensity; high quality reflector with micro-faceted, aluminum-vaporised surface; PC2; 220-240 V; incl. DALI-2 converter; through wiring connection box, 3-pole or 5-pole, available as an accessory; accessories are listed separately; light source replaceable by an authorized professional; control gear replaceable by an authorized professional;

## Light distribution



## Product drawing

