

# SASSO 100 square adjustable

trim

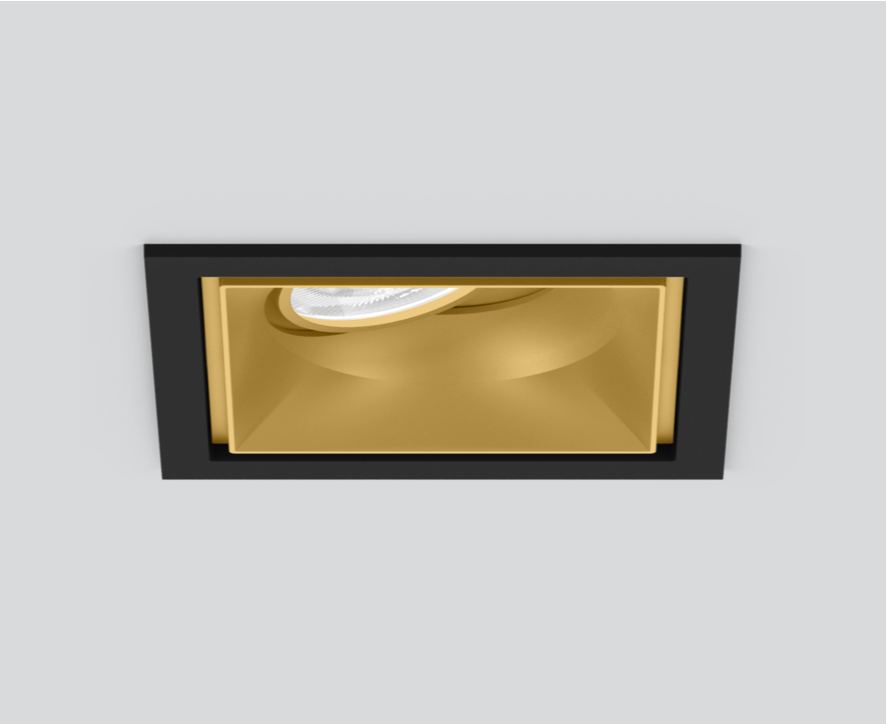
048-2730219W 048-2797318 002-90780



Project / Type \_\_\_\_\_

Notes \_\_\_\_\_

Count / Date \_\_\_\_\_



\_\_\_\_\_

\_\_\_\_\_

\_\_\_\_\_

## General

Ceiling , Recessed \_\_\_\_\_

tilt max 30° \_\_\_\_\_

gold , RAL 260-M <sup>1</sup> \_\_\_\_\_

Mounting set jet black \_\_\_\_\_

front IP40 , back IP20 \_\_\_\_\_

2380 lm \_\_\_\_\_

fixture 105 lm/W<sup>2</sup> \_\_\_\_\_

## LED

3500 K \_\_\_\_\_

CRI ≥ 90 \_\_\_\_\_

L80 / 50000 h \_\_\_\_\_

initial MacAdam ≤ 2 SDCM \_\_\_\_\_

R<sub>g</sub>: 99 , R<sub>r</sub>: 90 , R<sub>t(1-5)</sub>: 89 \_\_\_\_\_

MR 0.7 \_\_\_\_\_

MDER 0.64 \_\_\_\_\_

## Optical

wide flood \_\_\_\_\_

beam angle 60° \_\_\_\_\_

≥65° <1500 cd/m<sup>2</sup> \_\_\_\_\_

Recessed square spotlight in die-cast aluminium; 1 lamp; surface gold; 30° tiltable; installation without tools in mounting set due to patented ball catch system; square installation housing; with trim jet black; suitable for ceiling thickness of 2-25 mm; passive cooling of the LEDs through improved heat sink geometry; with COB (Chip on Board) technology for maximum efficiency; no appearance of multiple shadows; light colour 3500 K; binning initial MacAdam ≤ 2 SDCM; CRI ≥ 90; min. 80% of luminous flux after 50000 operating hours; energy efficient LEDs with high CRI; incl. high quality lens system; precise radiation characteristic with 60° beam; degree of protection from below IP40 (from above IP20); PC2; 220-240 V; incl. converter, non dimmable; through wiring connection box, 3-pole or 5-pole, available as an accessory; accessories are listed separately; light source replaceable by an authorized professional; control gear replaceable by an authorized professional;

## Electrical

non DIM \_\_\_\_\_

220-240 V \_\_\_\_\_

system 26.7 W \_\_\_\_\_

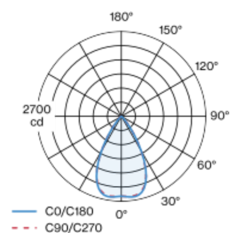
fixture 22.7 W \_\_\_\_\_

36 Vf \_\_\_\_\_

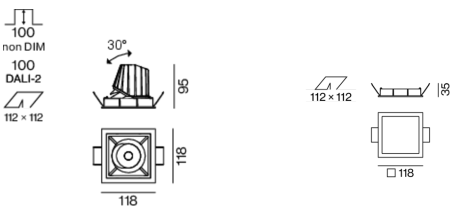
650 mA \_\_\_\_\_

PC2 \_\_\_\_\_

## Light distribution



## Product drawing



## Physical

trim \_\_\_\_\_

length 118 mm \_\_\_\_\_

width 118 mm \_\_\_\_\_

height 95 mm \_\_\_\_\_

0.5 kg \_\_\_\_\_

## Cutout

length 112 mm \_\_\_\_\_

width 112 mm \_\_\_\_\_

min. ceiling thickness 2 mm \_\_\_\_\_

max. ceiling thickness 25 mm \_\_\_\_\_

recessed depth 100 mm \_\_\_\_\_

<sup>1</sup> RAL code

<sup>2</sup> incl. consideration of optical losses & internal control unit losses

## Installation instructions



## Lighting calculator

