

FINA SUPPORT opal 30°

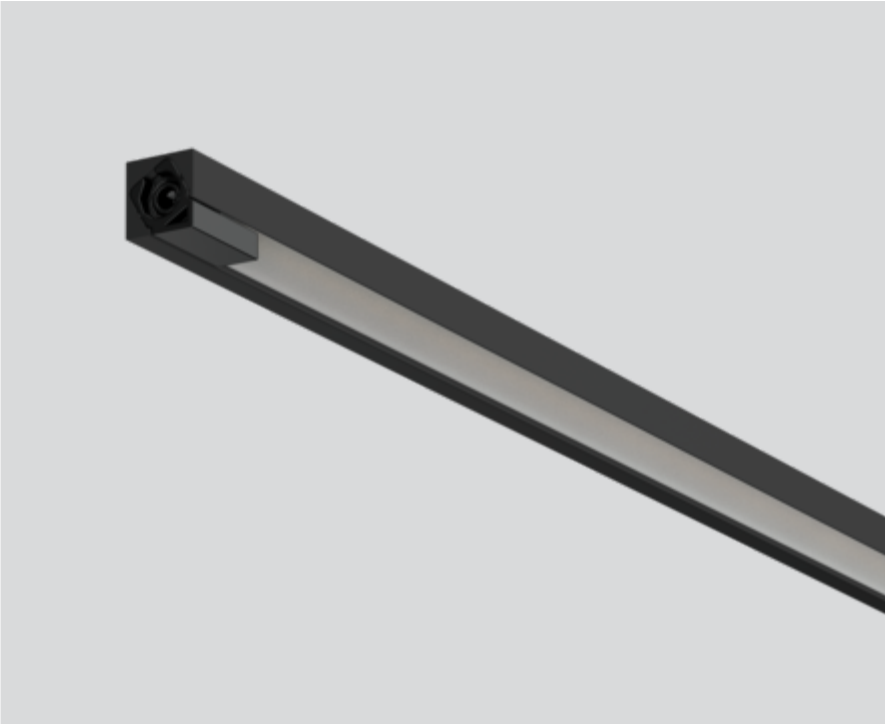
011-13060180



Project / Type

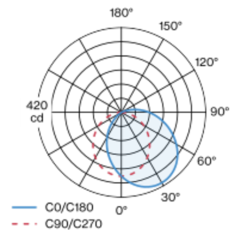
Notes

Count / Date



Miniature rectangular lamp made of aluminium; angular design; surface lacquered in black; plug and play electrical connector system for toolless mounting; different mechanical and electrical poles available - for flexible system design (available as an accessory); completely homogeneously illuminated, satinised PMMA cover; light colour 3000 K; binning initial MacAdam ≤ 3 SDCM; CRI ≥ 97 ; min. 85% of luminous flux after 50000 operating hours; energy efficient LEDs with high CRI; light inset rotatable; degree of protection IP20; PC3; 24 V; accessories are listed separately; light source replaceable by an authorized professional;

Light distribution



Product drawing



General

Showcase , Standing

rotation 360°

black , RAL 9021 ¹

IP20

Interior

1020 lm

optical inset 74 lm/W²

LED

3000 K

CRI ≥ 97

L85 / 50000 h

initial MacAdam ≤ 3 SDCM

R_g: 99 , R_r: 96 , R_{t(1-5)}: 97

MR 0.68

MDER 0.61

Optical

Opal

opal (lambertsch)

Electrical

excl. driver

24 V

fixture 18.2 W

optical inset 13.9 W

PC3

19 W/m

24 V

Physical

length 1000 mm

width 9 mm

height 9 mm

¹ RAL code ² incl. consideration of optical losses

Installation instructions





Maintenance Factors

Operating Time [h]	10 000	20 000	30 000	40 000	50 000
LLMF	0.979	0.955	0.931	0.908	0.885
LSF	1	1	1	1	1

MF	LMF × RSMF × LLMF × LSF	RSMF ^a	Room Surface Maintenance Factor
MF	Maintenance Factor	LLMF	Lamp Lumens Maintenance Factor
LMF ^a	Luminaire Maintenance Factor	LSF	Lamp Survival Factor

^a According to "CIE 97, Maintenance of indoor electric lighting systems", 2005, ISBN 3-900-734-34-8. The values must be determined by the planner.

Mounting accessories

MOUNTING POLE L

TYPE	COLOUR	ARTICLE NUMBER(S)
mechanical 180	white aluminium	011-9121116
mechanical 180	black	011-9121118
feeder / mechanical 180	white aluminium	011-9121136
feeder / mechanical 180	black	011-9121138
mechanical 200	white aluminium	011-9121216
mechanical 200	black	011-9121218
feeder / mechanical 200	white aluminium	011-9121236
feeder / mechanical 200	black	011-9121238
mechanical 300	white aluminium	011-9121316
mechanical 300	black	011-9121318
feeder / mechanical 300	white aluminium	011-9121336
feeder / mechanical 300	black	011-9121338



Mounting accessories

MOUNTING POLE T

TYPE	COLOUR	ARTICLE NUMBER(S)
mechanical / electrical 180	white aluminium	011-9122126
mechanical / electrical 180	black	011-9122128
mechanical / electrical 200	white aluminium	011-9122226
mechanical / electrical 200	black	011-9122228
mechanical / electrical 300	white aluminium	011-9122326
mechanical / electrical 300	black	011-9122328



Mounting accessories

MOUNTING POLE Y

TYPE	COLOUR	ARTICLE NUMBER(S)
mechanical / electrical 180	white aluminium	011-9123126
mechanical / electrical 180	black	011-9123128
feeder / mechanical 180	white aluminium	011-9123136
feeder / mechanical 180	black	011-9123138
mechanical / electrical 200	white aluminium	011-9123226
mechanical / electrical 200	black	011-9123228
feeder / mechanical 200	white aluminium	011-9123236
feeder / mechanical 200	black	011-9123238
mechanical / electrical 300	white aluminium	011-9123326
mechanical / electrical 300	black	011-9123328
feeder / mechanical 300	white aluminium	011-9123336
feeder / mechanical 300	black	011-9123338





Project / Type

Notes

Count / Date

Electrical accessories

POWER SUPPLY 24V EU

TYPE	L-W-H (MM)	ARTICLE NUMBER(S)
18 W non dim	130-43-30	011-9212110
35 W non dim	195-43-30	011-9212210
60 W non dim	220-43-30	011-9212310
18 W DALI-2	130-43-30	011-9212130
35 W DALI-2	195-43-30	011-9212230
60 W DALI-2	220-43-30	011-9212330



POWER SUPPLY 24V UL

TYPE	L-W-H (MM)	ARTICLE NUMBER(S)
20 W non dim	153-41-32	011-9282110
40 W non dim	210-40-30	011-9282210
60 W non dim	250-40-30	011-9282310
60 W 1-10 V	176-45-32	011-9282320
60 W DALI-2	176-45-32	011-9282330



Electrical accessories

EXTENSION CABLE

TYPE	ARTICLE NUMBER(S)
1 × socket / 1 × plug	011-9222120
1 × socket / 1 × plug	011-9222140
1 × socket / 1 × plug	011-9222180

