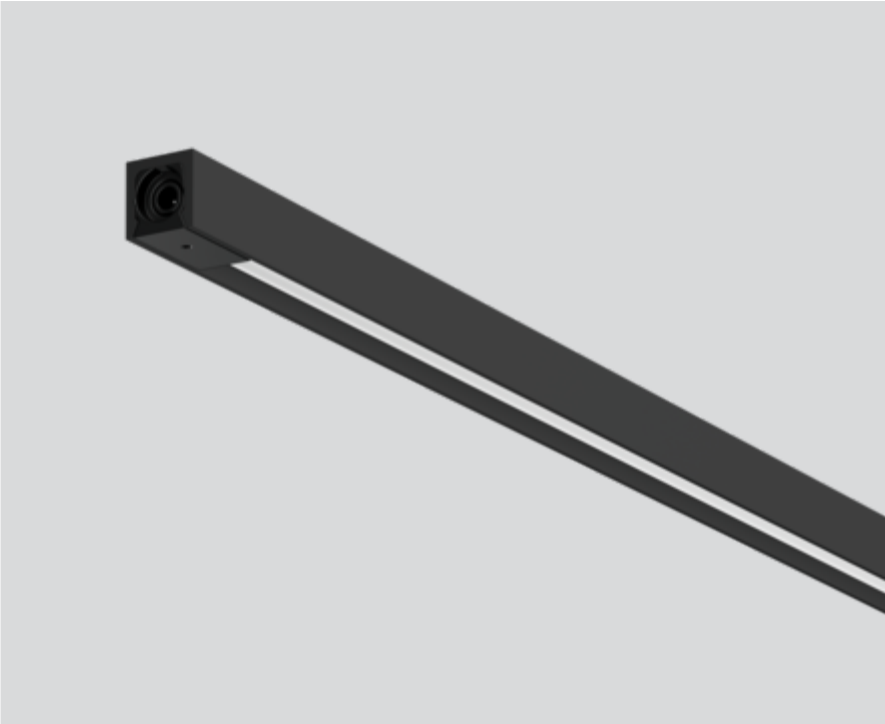




Project / Type

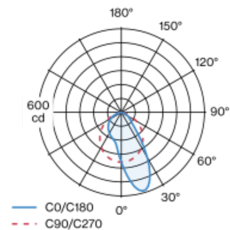
Notes

Count / Date



Miniature rectangular lamp made of aluminium; angular design; surface lacquered in black; plug and play electrical connector system for toolless mounting; different mechanical and electrical poles available - for flexible system design (available as an accessory); specially computed foil for asymmetrical light distribution; light colour 4000 K; binning initial MacAdam ≤ 3 SDCM; CRI ≥ 97 ; min. 85% of luminous flux after 50000 operating hours; energy efficient LEDs with high CRI; light inset rotatable; degree of protection IP20; PC3; 24 V; accessories are listed separately; light source replaceable by an authorized professional;

Light distribution



Product drawing



General

Showcase | Standing

rotation 360°

black | RAL 9021 ¹

IP20

Interior

818 lm

1430 lm/m

optical inset 92 lm/W ²

LED

4000 K

CRI ≥ 97

L85 / 50000 h

initial MacAdam ≤ 3 SDCM

R_g: 100 | R_f: 96 | R_{f(1-5)}: 98

MR 0.86 | MDER 0.78

Optical

asymmetric

Electrical

excl. driver

PC3 | 24 V

fixture 11.6 W

optical inset 8.9 W

20 W/m

24 V

Physical

length 600 mm | width 9 mm | height 9 mm

¹ RAL code ² incl. consideration of optical losses

Installation instructions

