

# FINA SUPPORT lead 30°

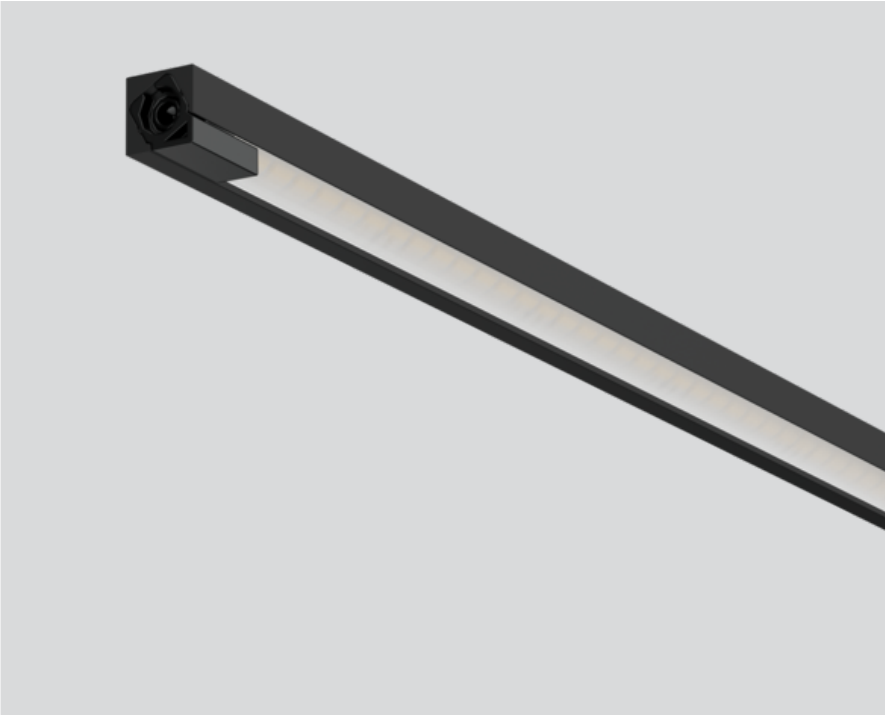
011-1304118A



Project / Type

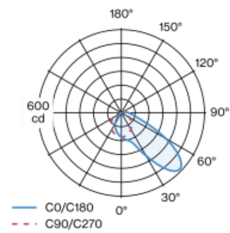
Notes

Count / Date



Miniature rectangular lamp made of aluminium; angular design; surface lacquered in tar black; plug and play electrical connector system for toolless mounting; different mechanical and electrical poles available - for flexible system design (available as an accessory); specially computed foil for asymmetrical light distribution; light colour 4000 K; binning initial MacAdam  $\leq 3$  SDCM; CRI  $\geq 97$ ; min. 85% of luminous flux after 50000 operating hours; energy efficient LEDs with high CRI; light inset rotatable; degree of protection IP20; PC3; 24 V; accessories are listed separately; light source replaceable by an authorized professional;

## Light distribution



## Product drawing



### General

Showcase | Standing

rotation 360°

tar black | RAL 9021

IP20

Interior

818 lm

optical inset 92 lm/W <sup>1</sup>

### LED

4000 K

CRI  $\geq 97$

L85 / 50000 h

initial MacAdam  $\leq 3$  SDCM

R<sub>g</sub>: 100 | R<sub>f</sub>: 96 | R<sub>(1-15)</sub>: 98

MR 0.86 | MDER 0.78

### Optical

asymmetric

### Electrical

excl. driver

PC3 | 24 V

fixture 11.6 W

optical inset 8.9 W

20 W/m

24 V

### Physical

length 600 mm | width 9 mm | height 9 mm

30°

<sup>1</sup> incl. consideration of optical losses

## Installation instructions

