

# MOUNTING CHANNEL 90 ANTI-GLARE

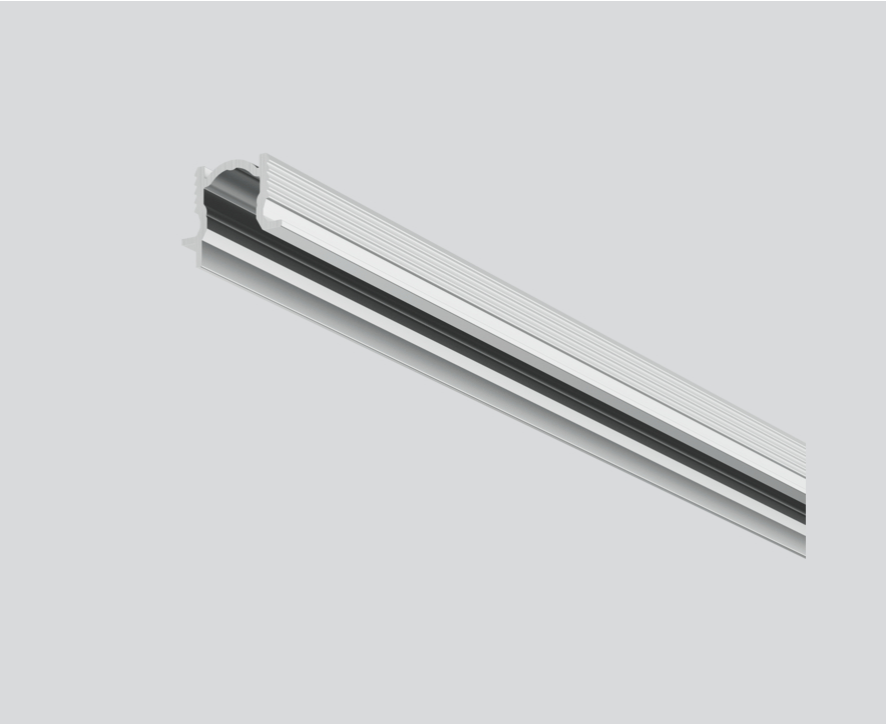
011-9101206



Project / Type \_\_\_\_\_

Notes \_\_\_\_\_

Count / Date \_\_\_\_\_



### General

white aluminium , RAL 9006 <sup>1</sup> \_\_\_\_\_

### Physical

length 230 mm \_\_\_\_\_

width 17 mm \_\_\_\_\_

height 15 mm \_\_\_\_\_

<sup>1</sup> RAL code

### Installation instructions



### Product drawing



[‘011-9101206’] The technical data represent rated values for an ambient temperature of 25°C. The data values for the luminous flux are initially subject to a tolerance of +/- 10%, those for the electrical connected load are initially subject to a tolerance of +/- 10%, and those for the colour temperature are initially subject to a tolerance of +/- 150 K. No liability is assumed for typographical or printing errors. The general terms and conditions of XAL GmbH apply.  
© XAL GmbH · Auer-Welsbach-Gasse 36 · 8055 Graz · Austria · [www.xal.com](http://www.xal.com)