

# POWER SUPPLY 24V EU

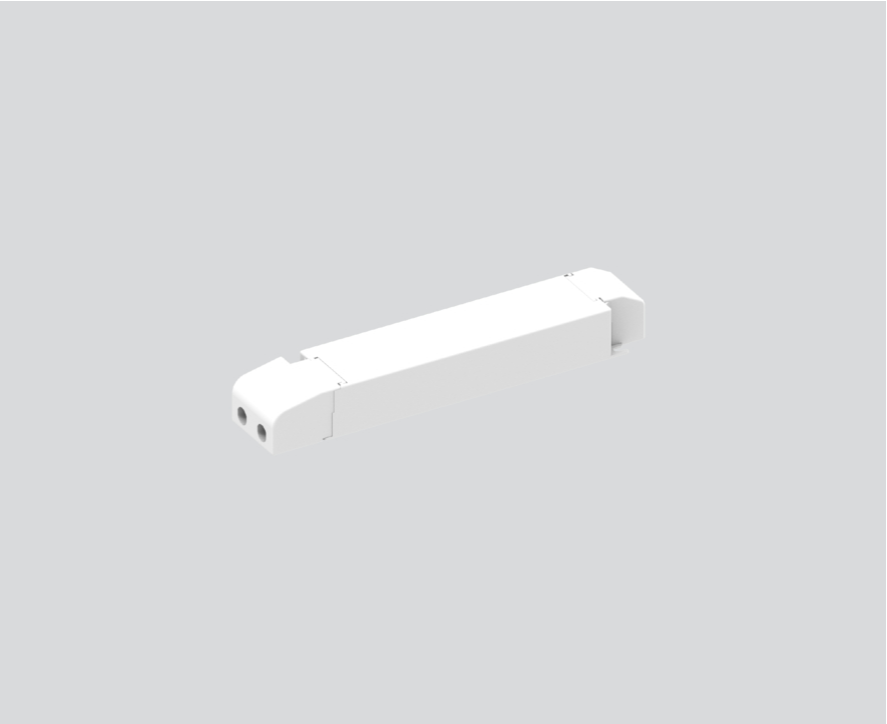
011-9212310



Project / Type

Notes

Count / Date



**General**  
60 W | non dim

**Electrical**  
350 mA  
PC2  
100 W  
non DIM  
min 198 V  
max 264 V  
 $\eta$  92 %  
Constant Voltage  
min 50 Hz  
max 60 Hz  
constant current 350 mA

**Physical**  
length 220 mm  
width 43 mm  
height 30 mm



# POWER SUPPLY 24V EU

011-9212310



Project / Type

Notes

Count / Date

## Circuit Breaker Types

Automatic Circuit Breaker Type	Number of Converters
B10	7
B13	9
B16	11
B20	14
C10	12
C13	15
C16	18
C20	23

