

# VARO 110 S

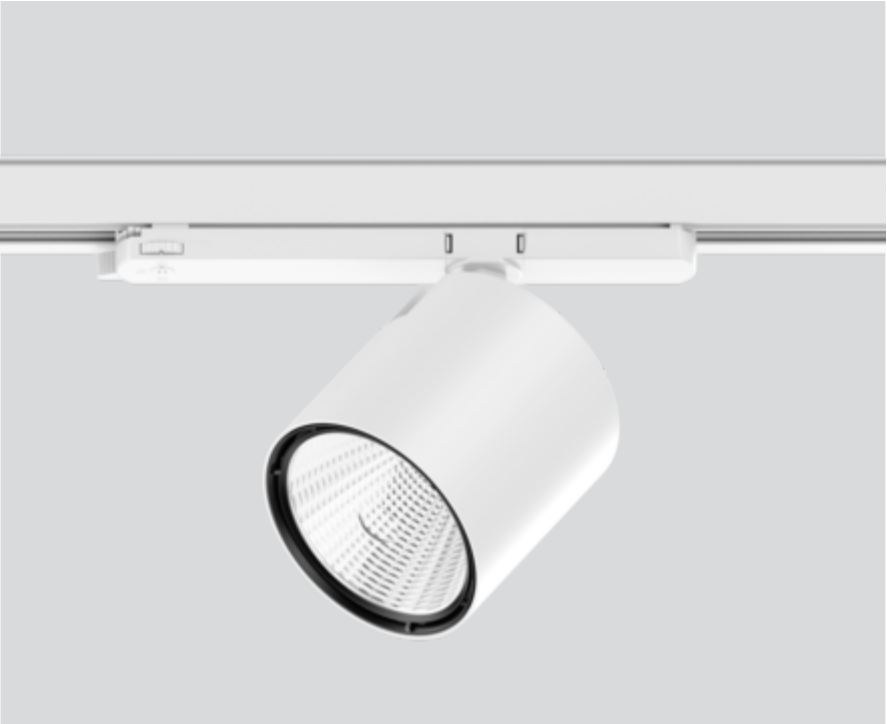
180-6531137S



Project / Type \_\_\_\_\_

Notes \_\_\_\_\_

Count / Date \_\_\_\_\_



220-240V

220-240V

X-PERT

X-PERT

## General

Ceiling , Track

tilt max 90°

rotation 355°

white , RAL9016 <sup>1</sup>

IP20

4500 lm

## LED

4000 K

CRI ≥ 90

initial MacAdam ≤ 3 SDCM

R<sub>g</sub>: 100 , R<sub>f</sub>: 92 , R<sub>(1-15)</sub>: 91

MR 0.78

MDER 0.71

## Optical

spot

beam angle 14°

## Electrical

DALI-2

36 W

PC2 220-240V

125 lm/W

## Physical

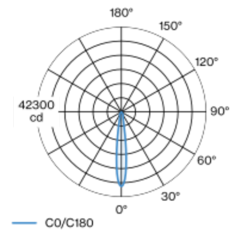
diameter 110 mm

height 110 mm

<sup>1</sup> RAL code

Track light made of die-cast aluminium; surface white powder coated; 355° rotatable and 90° tiltable; integrated converter in the plastic adapter; passive cooling of the LEDs through improved heat sink geometry; with COB (Chip on Board) technology for maximum efficiency; no appearance of multiple shadows; light colour 4000 K; binning initial MacAdam ≤ 3 SDCM; CRI ≥ 90; min. 85% of luminous flux after 50000 operating hours; energy efficient LEDs with high CRI; including high quality aluminium reflector with spherical reflector; high gloss anodised; neutral colour reflection through absolute freedom from interference colour; for brilliant object staging; precise radiation characteristic with 14° beam; installed and exchanged without tools; optical attachments available as accessories; optical attachments can be combined; accessories are listed separately; degree of protection IP20; PC2 220-240V; incl. DALI-2 converter; adapter for toolless insertion or movement on a variety of 3-phase power tracks; light source replaceable by an authorized professional; control gear replaceable by an authorized professional;

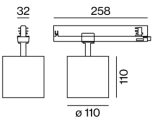
## Light distribution



spot 14°

h (m)	EO° (lx)	ø (m)
1	37100	0.25
2	9300	0.50
3	4100	0.75
4	2300	1.00
5	1500	1.25

## Product drawing



## Installation instructions



## Lighting calculator



# VARO 110 S

180-6531137S



Project / Type

Notes

Count / Date

## Maintenance Factors

Operating Time [h]	10 000	20 000	30 000	40 000	50 000
LLMF	0.977	0.95	0.923	0.897	0.872
LSF	1	1	1	1	1

MF

MF

LMF<sup>a</sup>

LMF × RSMF × LLMF × LSF

Maintenance Factor

Luminaire Maintenance Factor

RSMF<sup>a</sup>

LLMF

LSF

Room Surface Maintenance Factor

Lamp Lumens Maintenance Factor

Lamp Survival Faktor

<sup>a</sup> According to "CIE 97, Maintenance of indoor electric lighting systems", 2005, ISBN 3-900-734-34-8. The values must be determined by the planner.

## Optical accessories

### HONEYCOMB LOUVER

Ø (MM)	ARTICLE NUMBER(S)
106	080-6501118

### WIDE FLOOD LENS

Ø (MM)	ARTICLE NUMBER(S)
106	080-6502110W

### OVAL LENS

Ø (MM)	ARTICLE NUMBER(S)
106	080-6502210

### SNOOT

TYPE	Ø (MM)	ARTICLE NUMBER(S)
short	97	080-6503118
medium	97	080-6503218
angle	97	080-6503318

