

VARO 110 S

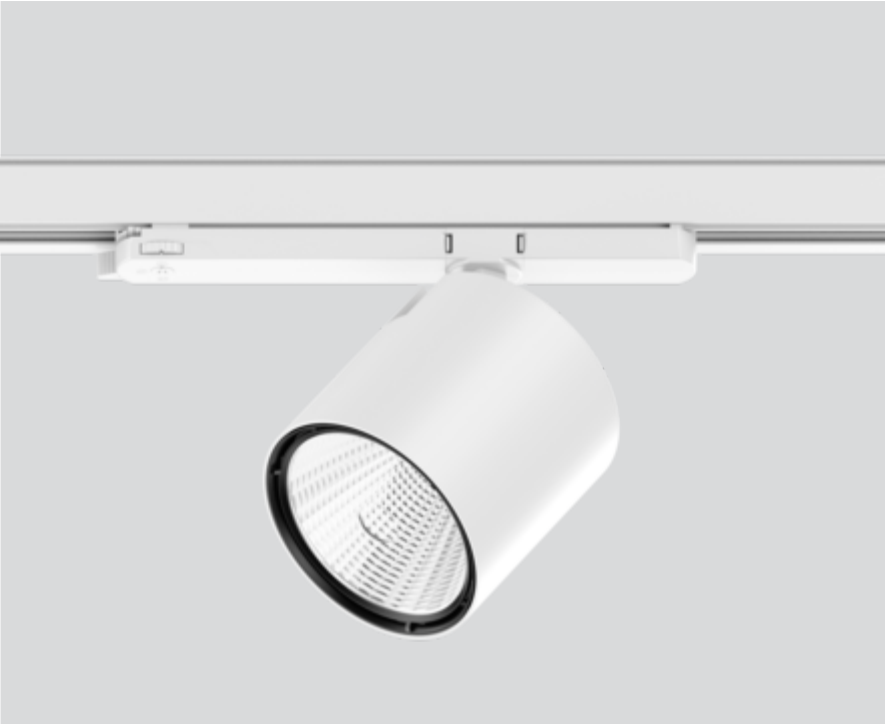
180-6531017W



Project / Type _____

Notes _____

Count / Date _____



220-240V

355°

X-PERT

X-PERT

General

Ceiling , Track

tilt max 90°

rotation 355°

white , RAL9016 ¹

IP20

4400 lm

LED

3000 K

CRI ≥ 90

initial MacAdam ≤ 3 SDCM

R_g: 99 , R_f: 92 , R₍₁₋₁₅₎: 93

MR 0.61

MDER 0.55

Optical

wide flood

beam angle 66°

PstLM ≤ 1.0 ²

SVM ≤ 0.4 ²

Electrical

non DIM

36 W

PC2 220-240V

122 lm/W

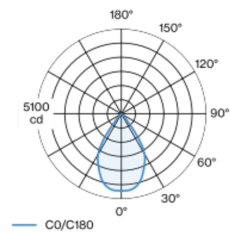
Physical

diameter 110 mm

height 110 mm

Track light made of die-cast aluminium; surface white powder coated; 355° rotatable and 90° tiltable; integrated converter in the plastic adapter; passive cooling of the LEDs through improved heat sink geometry; with COB (Chip on Board) technology for maximum efficiency; no appearance of multiple shadows; light colour 3000 K; binning initial MacAdam ≤ 3 SDCM; CRI ≥ 90; min. 85% of luminous flux after 50000 operating hours; energy efficient LEDs with high CRI; including high quality aluminium reflector with spherical reflector; high gloss anodised; neutral colour reflection through absolute freedom from interference colour; for brilliant object staging; precise radiation characteristic with 66° beam; installed and exchanged without tools; optical attachments available as accessories; optical attachments can be combined; accessories are listed separately; degree of protection IP20; PC2 220-240V; incl. converter, non dimmable; adapter for toolless insertion or movement on a variety of 3-phase power tracks; light source replaceable by an authorized professional; control gear replaceable by an authorized professional;

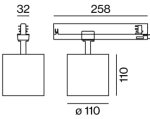
Light distribution



wide flood 66°

h (m)	EO° (lx)	ø (m)
1	4610	1.30
2	1150	2.60
3	510	3.89
4	290	5.19
5	180	6.49

Product drawing



¹ RAL code ² Value of containing product at full load (undimmed)

Installation instructions



Lighting calculator

