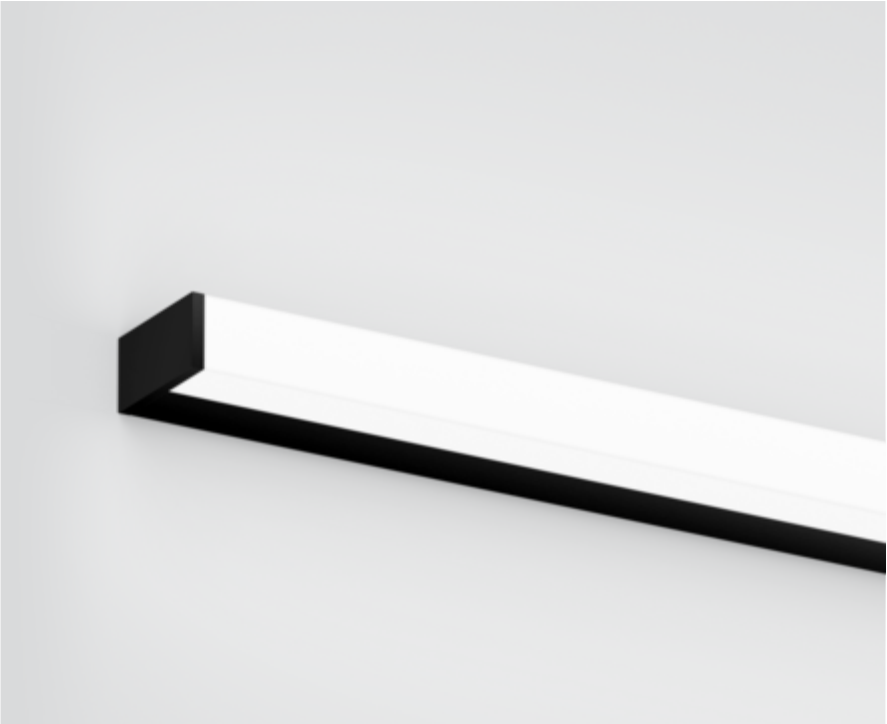




Project / Type

Notes

Count / Date



IP 44

220-240V

X-PERT

General

Wall , Surface

black , RAL9005 ¹

End cap black

IP44

2010 lm

LED

3000 K

CRI ≥ 90

L80 / 50000 h

photobio. safety RG 0 - no Risk

initial MacAdam ≤ 3 SDCM

R_g: 99 , R_f: 91 , R₍₁₋₁₅₎: 89

MR 0.61

MDER 0.55

Optical

High Performance Opal

PstLM ≤ 1.0 ²

SVM ≤ 0.4 ²

Electrical

DALI-2

19.7 W

PC1 220-240V

102 lm/W

1 DALI Addr.

Physical

length 900 mm

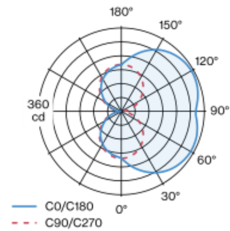
width 80 mm

height 40 mm

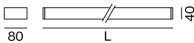
1.3 kg

¹ RAL code ² Value of containing product at full load (undimmed)

Light distribution



Product drawing



Installation instructions

