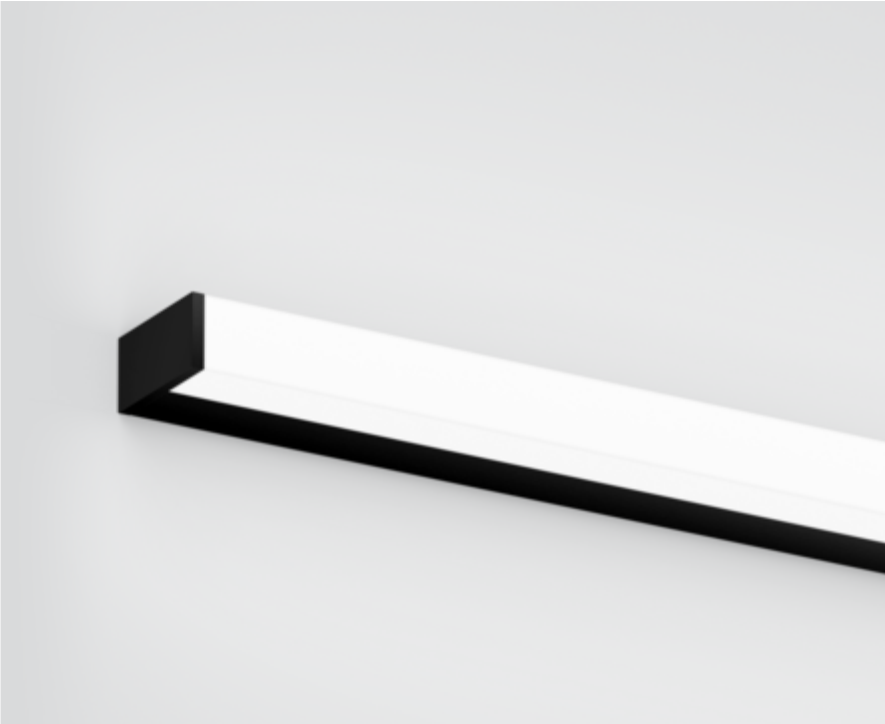




Project / Type

Notes

Count / Date



General

Wall , Surface

black , RAL9005 ¹

IP44

2680 lm

LED

3000 K

CRI ≥ 90

L80 / 50000 h

photobio. safety RG 0 - no Risk

initial MacAdam ≤ 3 SDCM

R_g: 99 , R_f: 91 , R_{f(1-15)}: 89

MR 0.61

MDER 0.55

Optical

High Performance Opal

PstLM ≤ 1.0 ²

SVM ≤ 0.4 ²

Electrical

DALI-2

26.3 W

PC1 220-240V

102 lm/W

1 DALI Addr.

Physical

length 1200 mm

width 80 mm

height 40 mm

1.8 kg

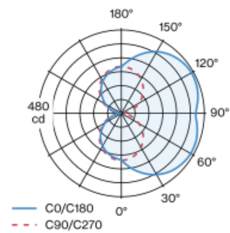
¹ RAL code ² Value of containing product at full load (undimmed)

Installation instructions

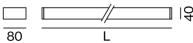


Luminaire housing made of extruded aluminium profile; angular design; no visible screws; surface black powder coated; end cap black powder coated (chromed border); suitable for wall or ceiling mounting; luminaire profile can be pre-mounted; with three sided light beam; HPO (High Performance Opal) cover for uniform illumination; light colour 3000 K; binning initial MacAdam ≤ 3 SDCM; CRI ≥ 90; min. 80% of luminous flux after 50000 operating hours; energy efficient LEDs with high CRI; degree of protection IP44; PC1 220-240V; photobiological safety according to IEC 62471 risk group RG 0 - no Risk; incl. DALI-2 converter; light source not replaceable; control gear replaceable by an authorized professional;

Light distribution



Product drawing



STRETTA surface

057-0134538H



Project / Type

Notes

Count / Date

Maintenance Factors

Operating Time [h]	10 000	20 000	30 000	40 000	50 000
LLMF	0.96	0.92	0.87	0.83	0.8
LSF	1	1	1	1	1

MF

LMF × RSMF × LLMF × LSF

MF

Maintenance Factor

LMF^a

Luminaire Maintenance Factor

RSMF^a

Room Surface Maintenance Factor

LLMF

Lamp Lumens Maintenance Factor

LSF

Lamp Survival Faktor

^a According to "CIE 97, Maintenance of indoor electric lighting systems", 2005, ISBN 3-900-734-34-8. The values must be determined by the planner.

Circuit Breaker Types

Automatic Circuit Breaker Type	Number of Fixtures
B10	18
B13	24
B16	30
B20	37
B25	46
C10	31
C13	40
C16	51
C20	62
C25	78