

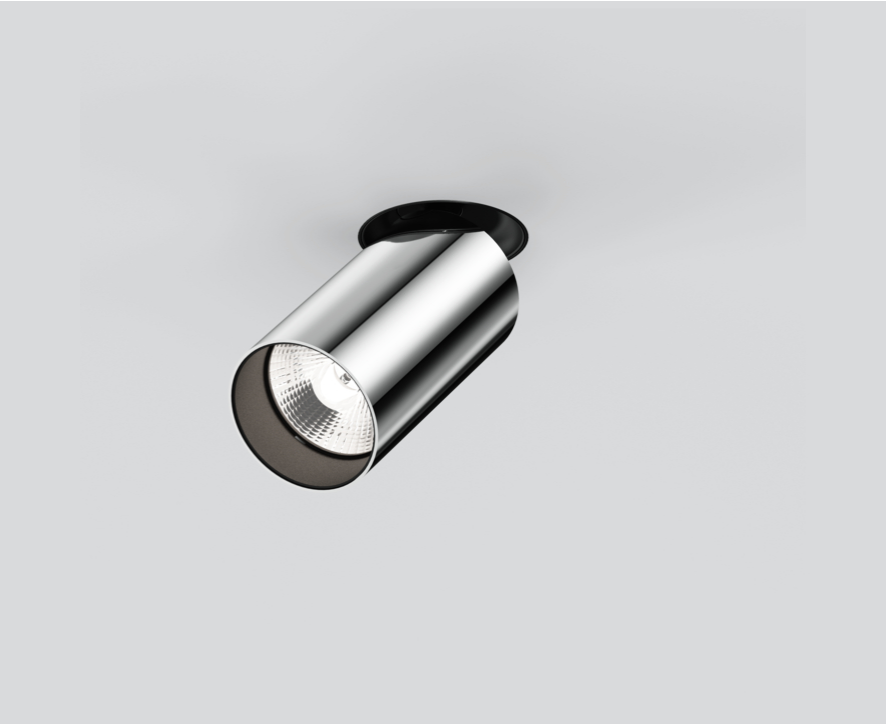
MOVE IN 45 flex round

trimless

063-8221414S 063-8812117 002-90720

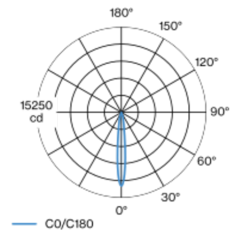


Project / Type
Notes
Count / Date



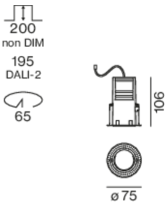
Round spotlight element in aluminium; surface chrome; installation without tools in mounting set due to patented ball catch system; for trimless installation in plasterboard ceilings; suitable for ceiling thickness of 9-25 mm; special mounting tool for easy installation of the trimless housing available as an accessory; spotlight element height adjustable without tools: flush with the ceiling, or extended 25 mm or 35 mm; 360° rotatable and 90° tilt; passive cooling of the LEDs through improved heat sink geometry; with COB (Chip on Board) technology for maximum efficiency; no appearance of multiple shadows; light colour 2700 K; binning initial MacAdam ≤ 2 SDCM; CRI ≥ 90 ; min. 80% of luminous flux after 50000 operating hours; energy efficient LEDs with high CRI; high quality, aluminium, vapour deposition coated reflector with faceted lens design; precise radiation characteristic with 12° beam; good glare control through recessed light point level; optical attachment available as accessory; accessories are listed separately; degree of protection IP20; PC2; 220-240 V; incl. DALI-2 converter; converter wired secondary side; light source replaceable by an authorized professional; control gear replaceable by an authorized professional;

Light distribution



h (m)	EO ³ (lx)	ø (m)
1	13200	0.21
2	3300	0.42
3	1500	0.63
4	800	0.84
5	500	1.06

Product drawing



General

Ceiling Semi-Recessed
tilt max 90°
rotation 360°
chrome
Mounting set traffic white
IP20
1040 lm

LED

2700 K
CRI ≥ 90
L80 / 50000 h
initial MacAdam ≤ 2 SDCM
R _g : 99 R _r : 91 R _{t(15)} : 89
MR 0.53 MDER 0.48

Optical

spot beam angle 12°
PstLM ≤ 1.0 ^{1 2 3 4} SVM ≤ 0.4 ^{1 2 3 4}

Electrical

DALI-2 1 DALI Addr.
PC2 220-240 V
system 15.0 W fixture 12.7 W
fixture 81 lm/W ⁵
37 Vf 350 mA

Physical

trimless
diameter 75 mm height 106 mm
0.54 kg

Cutout

diameter 65 mm
min. ceiling thickness 9 mm max. ceiling thickness 25 mm
recessed depth 195 mm

¹ soft lens BO 45 007-1965980
² wallwasher lens BO 45 007-1965780
³ oval lens BO 45 007-1965880
⁴ Value of containing product at full load (undimmed)
⁵ incl. consideration of optical losses & internal control unit losses

Installation instructions



Lighting calculator

