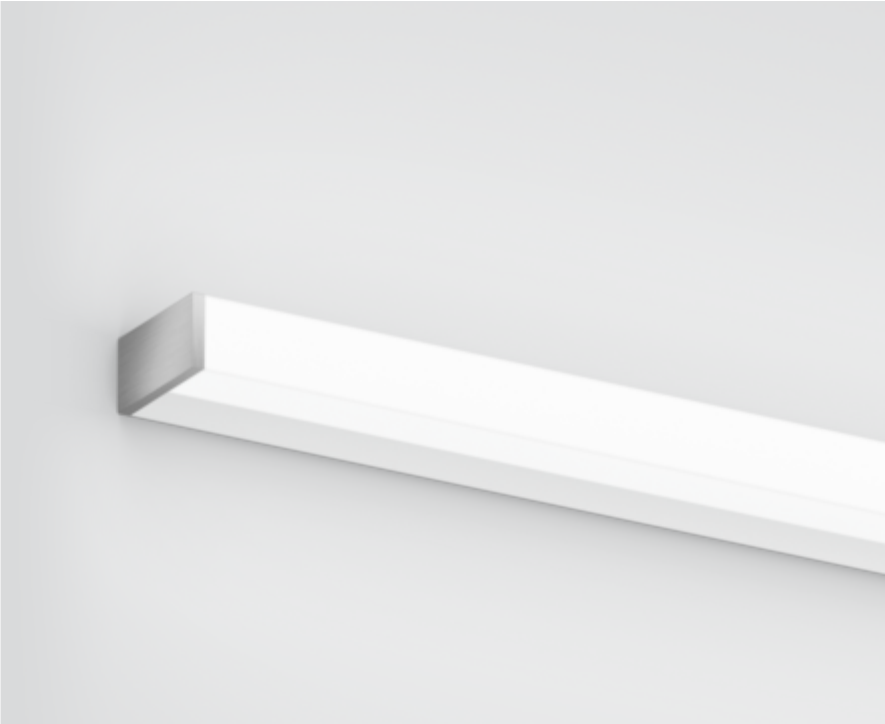




Project / Type

Notes

Count / Date



IP 44

220-240V

X-PERT

General

Wall , Surface

white , RAL9010 ¹

End cap brushed aluminium

IP44

1480 lm

LED

4000 K

CRI ≥ 90

L80 / 50000 h

photobio. safety RG 0 - no Risk

initial MacAdam ≤ 3 SDCM

R_g: 98 , R_f: 90 , R_{t(1-15)}: 88

MR 0.76

MDER 0.69

Optical

High Performance Opal

PstLM ≤ 1.0 ²

SVM ≤ 0.4 ²

Electrical

non DIM

13.1 W

PC1 220-240V

113 lm/W

Physical

length 600 mm

width 80 mm

height 40 mm

1 kg

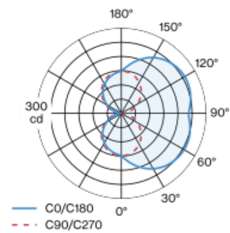
¹ RAL code ² Value of containing product at full load (undimmed)

Installation instructions



Luminaire housing made of extruded aluminium profile; angular design; no visible screws; surface white powder coated; end cap brushed aluminium; suitable for wall mounting; luminaire profile can be pre-mounted; with three sided light beam; HPO (High Performance Opal) cover for uniform illumination; light colour 4000 K; binning initial MacAdam ≤ 3 SDCM; CRI ≥ 90; min. 80% of luminous flux after 50000 operating hours; energy efficient LEDs with high CRI; degree of protection IP44; PC1 220-240V; photobiological safety according to IEC 62471 risk group RG 0 - no Risk; incl. converter, non dimmable; light source not replaceable; control gear replaceable by an authorized professional;

Light distribution



Product drawing

