



MINO 40

surface

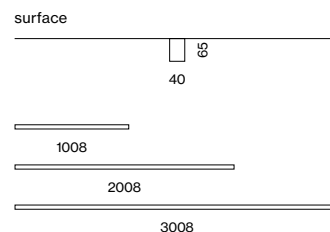
^{EN} Luminaire housing from extruded aluminium profile, angular design; no visible screws; surface powder coated; luminaire profile can be pre-mounted; remaining luminaire components mounted without tools; light inset consisting of highly reflective coated extruded profile for improved thermal management; HPO (High Performance Opal) cover for uniform illumination; energy-efficient LEDs with very good colour rendering

^{DE} Leuchtenkörper aus Aluminiumstrangpressprofil, kantige Ausführung; keine sichtbaren Schrauben; Oberfläche pulverbeschichtet; Leuchtenprofil vorab montierbar; restliche Leuchtenkomponenten werkzeuglos montierbar; Lichteinsatz bestehend aus hochreflektierend lackiertem Strangpressprofil für verbessertes Thermomanagement; HPO (High Performance Opal) Abdeckung für homogene Ausleuchtung; energieeffiziente LEDs mit sehr guter Farbwiedergabe

Quickinfo

3000 K, 4000 K
CRI ≥ 90 , 3 SDCM
up to 116 lm/W
L90 @ 50 000 h
DALI-2
opal

Types



Colours



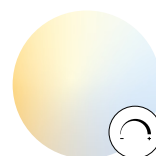
Light distribution



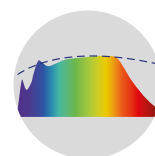
DiiA® standards
251, 252, 253



system
solution (p. 912)



tunable white
2700-6500 K



CRI ≥ 98
XPECTRUM

Order options

COLOUR TEMPERATURE	
3000K	0
4000K	1

CONTROL

DALI-2

MATERIAL COLOUR

<input type="radio"/> pure white RAL 9010	7
<input type="radio"/> traffic white RAL 9016	W
<input type="radio"/> white aluminium RAL 9006	G
<input checked="" type="radio"/> jet black RAL 9005	8

LIGHT OPTIC COVER

opal high performance

Options on request

COLOUR RENDERING INDEX

CRI ≥ 98 XPECTRUM

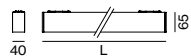
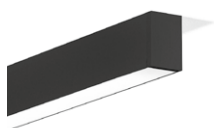
COLOUR TEMPERATURE

tunable white 2700–6500K

DALI-2 DT8

LIGHT OPTIC COVER

microprismatic



MINO 40 surface



CRI ≥ 90	RG0 IEC 62471	DALI 1ADDR.	220-240V
-------------	------------------	----------------	----------

MID LUMEN

SYS. POWER	COLOUR TEMP.	LUM. FLUX	L (mm)	ORDER CODE
12.4W	3000K	1370lm	1008	0 4 2 - 1 1 1 2 :: 3 H
	4000K	1430lm		
24.8W	3000K	2730lm	2008	0 4 2 - 1 1 1 4 :: 3 H
	4000K	2860lm		
37W	3000K	4100lm	3008	0 4 2 - 1 1 1 6 :: 3 H
	4000K	4300lm		

HIGH LUMEN

SYS. POWER	COLOUR TEMP.	LUM. FLUX	L (mm)	ORDER CODE
20.1W	3000K	2140lm	1008	0 4 2 - 1 1 2 2 :: 3 H
	4000K	2240lm		
40W	3000K	4270lm	2008	0 4 2 - 1 1 2 4 :: 3 H
	4000K	4470lm		
60W	3000K	6410lm	3008	0 4 2 - 1 1 2 6 :: 3 H
	4000K	6710lm		