

SASSO 60 round adjustable

trim 2 lamps

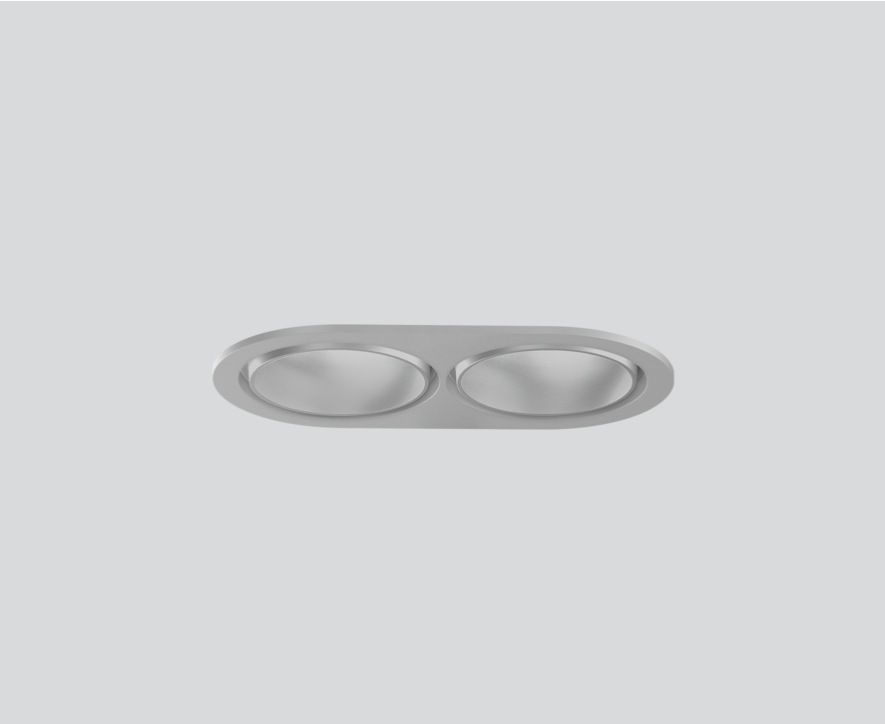
048-2622514F 048-269831G 002-90762



Project / Type

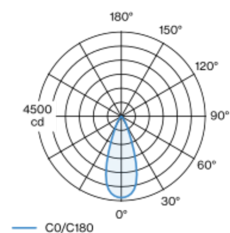
Notes

Count / Date

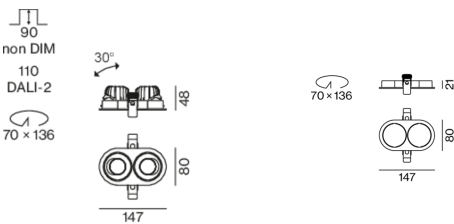


Round recessed spotlight in die-cast aluminium; 2 lamps; surface matt silver; 360° rotatable and 30° tiltable; installation without tools in mounting set due to patented ball catch system; oval installation housing; with trim silver-grey; suitable for ceiling thickness of 2-25 mm; passive cooling of the LEDs through improved heat sink geometry; with COB (Chip on Board) technology for maximum efficiency; no appearance of multiple shadows; light colour 3000 K; binning initial MacAdam ≤ 2 SDCM; CRI ≥ 90 ; min. 80% of luminous flux after 50000 operating hours; energy efficient LEDs with high CRI; incl. high quality lens system; precise radiation characteristic with 39° beam; UGR ≤ 19 ; degree of protection from below IP40 (from above IP20); PC2 220-240V; incl. DALI-2 converter; light source replaceable by an authorized professional; control gear replaceable by an authorized professional;

Light distribution



Product drawing



↑ IP20

↓ IP40

220-240V

360°

X-PERT

X-PERT

General

Ceiling , Recessed

tilt max 30°

rotation 360°

matt silver

Mounting set silver-grey

front IP40 , back IP20

2040 lm

LED

3000 K

CRI ≥ 90

L80 / 50000 h

initial MacAdam ≤ 2 SDCM

R_g: 100 , R_f: 91 , R_{f(1-5)}: 88

MR 0.59

MDER 0.53

Optical

flood

beam angle 39°

UGR < 19

PstLM ≤ 1.0 ¹

SVM ≤ 0.4 ¹

Electrical

DALI-2

25.2 W

total insets 21.4 W

PC2 220-240V

81 lm/W

1 DALI Addr.

Physical

trim

length 147 mm

width 80 mm

height 48 mm

0.34 kg

Cutout

diameter 70 mm

length 136 mm

min. ceiling thickness 2 mm

max. ceiling thickness 25 mm

recessed depth 110 mm

¹ Value of containing product at full load (undimmed)

Installation instructions



Lighting calculator

