

# ARY rod suspended canopy surface

049-5221618F 005-2602118



Project / Type

Notes

Count / Date



### General

Ceiling | Suspended

jet black | RAL 9005

Canopy jet black

IP20

791 lm

### LED

4000 K

CRI ≥ 90

L90 / 50000 h

initial MacAdam ≤ 3 SDCM

R<sub>g</sub>: 99 | R<sub>f</sub>: 89 | R<sub>1-15</sub>: 87

MR 0.81 | MDER 0.73

### Optical

flood | beam angle 44°

### Electrical

non DIM

PC2 | 220-240 V

system 11.2 W | fixture 8.4 W

fixture 94 lm/W <sup>1</sup>

18 Vf | 500 mA

### Physical

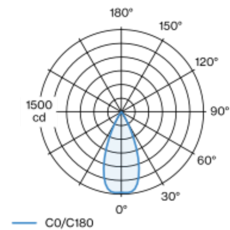
rod 1500 mm with hook

diameter 47 mm | height 110 mm

0.66 kg

Decorative suspended luminaire in aluminium; surface jet black powder coated; height adjustable U-profile pendant rod suspension (jet black) 1500mm, feed 2000mm (1500mm in U-profile), incl. ceiling mounting ring + hook (jet black) for multiple positioning of the luminaire in the room; passive cooling of the LEDs through improved heat sink geometry; with COB (Chip on Board) technology for maximum efficiency; no appearance of multiple shadows; light colour 4000 K; binning initial MacAdam ≤ 3 SDCM; CRI ≥ 90; min. 90% of luminous flux after 50000 operating hours; energy efficient LEDs with high CRI; good glare control through recessed light point level; incl. high quality lens system; precise radiation characteristic with 44° beam; degree of protection IP20; PC2; 220-240 V; light source not replaceable; control gear replaceable by an authorized professional;

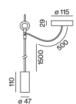
### Light distribution



flood 44°

| h (m) | E0° (lx) | ø (m) |
|-------|----------|-------|
| 1     | 1470     | 0.82  |
| 2     | 370      | 1.64  |
| 3     | 160      | 2.45  |
| 4     | 90       | 3.27  |
| 5     | 60       | 4.09  |

### Product drawing



<sup>1</sup> incl. consideration of optical losses & internal control unit losses

### Installation instructions



### Lighting calculator



# ARY rod suspended canopy surface

049-5221618F 005-2602118



Project / Type

Notes

Count / Date

## Maintenance Factors

| Operating Time [h] | 10 000 | 20 000 | 30 000 | 40 000 | 50 000 |
|--------------------|--------|--------|--------|--------|--------|
| LLMF               | 0.97   | 0.96   | 0.95   | 0.93   | 0.92   |
| LSF                | 1      | 1      | 1      | 1      | 1      |

MF

LMF × RSMF × LLMF × LSF

MF

Maintenance Factor

LMF<sup>a</sup>

Luminaire Maintenance Factor

RSMF<sup>a</sup>

Room Surface Maintenance Factor

LLMF

Lamp Lumens Maintenance Factor

LSF

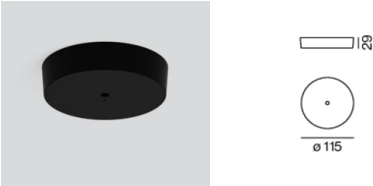
Lamp Survival Factor

<sup>a</sup> According to "CIE 97, Maintenance of indoor electric lighting systems", 2005, ISBN 3-900-734-34-8. The values must be determined by the planner.

## Components

### CANOPY for cable suspension

|           |        |                   |
|-----------|--------|-------------------|
| COLOUR    | Ø (MM) | ARTICLE NUMBER(S) |
| jet black | 115    | 005-2602118       |



## Mounting accessories

### RING ceiling mounted

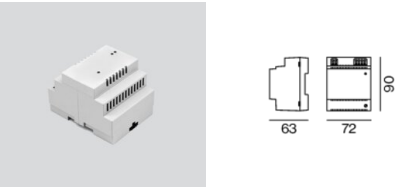
|               |        |                   |
|---------------|--------|-------------------|
| COLOUR        | Ø (MM) | ARTICLE NUMBER(S) |
| traffic white | 50     | 050-0510217       |
| jet black     | 50     | 050-0510218       |



## Optional electrical accessories

### DIN RAIL POWER SUPPLY

|            |                   |
|------------|-------------------|
| L-W-H (MM) | ARTICLE NUMBER(S) |
| 72-90-63   | 005-6520210       |



### DIN RAIL LED DRIVER

|            |                   |
|------------|-------------------|
| L-W-H (MM) | ARTICLE NUMBER(S) |
| 36-88-59   | 005-6121030       |



# ARY rod suspended canopy surface

049-5221618F 005-2602118



Project / Type

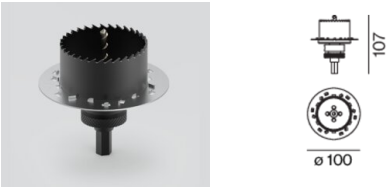
Notes

Count / Date

## Other accessories

### SPECIAL MOUNTING TOOL

| TYPE  | Ø (MM) | ARTICLE NUMBER(S) |
|---|--------|-------------------|
| for ARY   MOVE IN 45   NOBA trimless   TULA | 100    | 063-8912110       |



## Optical accessories

### OVAL LENS

| TYPE                                | Ø (MM) | ARTICLE NUMBER(S) |
|-------------------------------------|--------|-------------------|
| for BO 45   MOVE IN 45   TULA micro | 42     | 007-1965880       |



### SOFT LENS

| TYPE                                      | Ø (MM) | ARTICLE NUMBER(S) |
|---|--------|-------------------|
| for ARY   BO 45   MOVE IN 45   TULA micro | 42     | 007-1965980       |

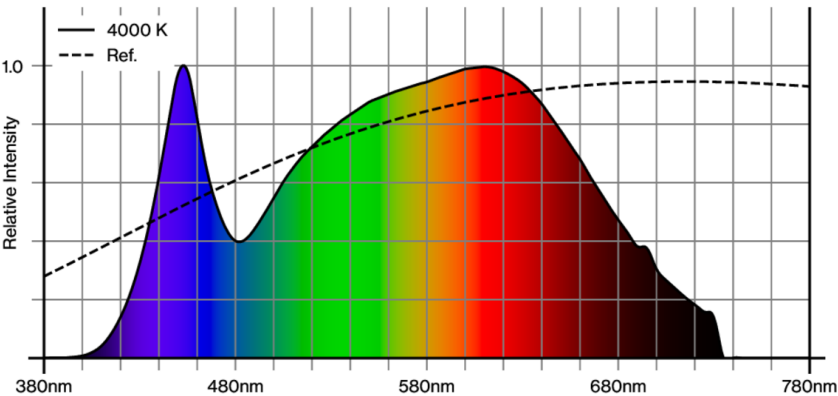


### WALLWASHER LENS

| TYPE                                      | Ø (MM) | ARTICLE NUMBER(S) |
|---|--------|-------------------|
| for ARY   BO 45   MOVE IN 45   TULA micro | 42     | 007-1965780       |



## Colour rendering



# ARY rod suspended canopy surface

049-5221618F 005-2602118

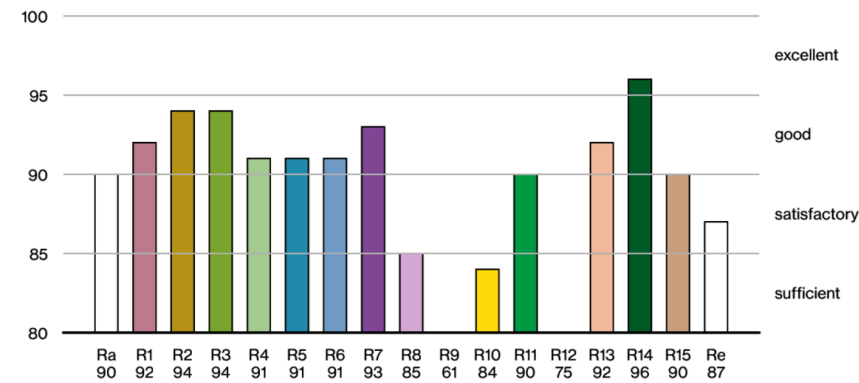


Project / Type

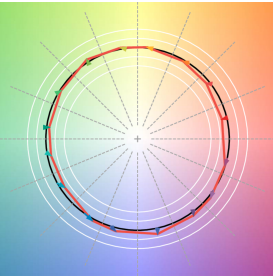
Notes

Count / Date

CRI/R<sub>a</sub> ≥ 91 R<sub>e</sub> ≥ 87 (4000 K)



## TM30 colour vector graphic



The black line represents the black body reference. The red line indicates the results of the test light source. The deviation from the test light source to the reference is shown and is marked by arrows. The shorter the arrows, the higher the color rendering.