

TULA micro suspended

canopy surface

049-5515417F 005-2602197



Project / Type

Notes

Count / Date



Decorative suspended luminaire in aluminium; surface traffic white powder coated; pendant fitting with 1500mm suspension; incl. feed (white), can be individually shortened; passive cooling of the LEDs through improved heat sink geometry; with COB (Chip on Board) technology for maximum efficiency; no appearance of multiple shadows; light colour 2700 K; binning initial MacAdam ≤ 3 SDCM; CRI ≥ 90 ; min. 90% of luminous flux after 50000 operating hours; energy efficient LEDs with high CRI; good glare control through recessed light point level; incl. high quality lens system; precise radiation characteristic with 44° beam; degree of protection IP20; PC2; 220-240 V; light source not replaceable; control gear replaceable by an authorized professional;



General

Ceiling | Suspended

traffic white | RAL 9016

Canopy traffic white

IP20

694 lm

LED

2700 K

CRI ≥ 90

L90 / 50000 h

initial MacAdam ≤ 3 SDCM

R_g: 99 | R_f: 91 | R_{f(-15)}: 89

MR 0.54 | MDER 0.49

Optical

flood | beam angle 44°

PstLM ≤ 1.0 ^{1 2 3 4} | SVM ≤ 0.4 ^{1 2 3 4}

Electrical

Casambi

PC2 | 220-240 V

system 11.3 W | fixture 8.4 W

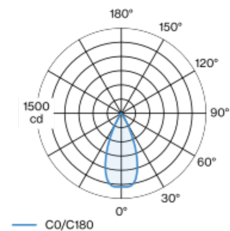
fixture 82 lm/W⁵

18 Vf | 500 mA

Physical

diameter 47 mm | height 300 mm

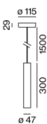
Light distribution



flood 44°

| h (m) | EO° (lx) | ø (m) |
|-------|----------|-------|
| 1 | 1290 | 0.82 |
| 2 | 320 | 1.64 |
| 3 | 140 | 2.45 |
| 4 | 80 | 3.27 |
| 5 | 50 | 4.09 |

Product drawing



¹ wallwasher lens BO 45 007-1965780
² soft lens BO 45 007-1965980 ³ oval lens BO 45 007-1965880
⁴ Value of containing product at full load (undimmed)
⁵ incl. consideration of optical losses & internal control unit losses

Installation instructions



Lighting calculator



TULA micro suspended

canopy surface

049-5515417F 005-2602197



Project / Type

Notes

Count / Date

Maintenance Factors

| Operating Time [h] | 10 000 | 20 000 | 30 000 | 40 000 | 50 000 |
|--------------------|--------|--------|--------|--------|--------|
| LLMF | 0.97 | 0.96 | 0.94 | 0.93 | 0.92 |
| LSF | 1 | 1 | 1 | 1 | 1 |

| | | | |
|------------------|------------------------------|-------------------|---------------------------------|
| MF | LMF × RSMF × LLMF × LSF | RSMF ^a | Room Surface Maintenance Factor |
| MF | Maintenance Factor | LLMF | Lamp Lumens Maintenance Factor |
| LMF ^a | Luminaire Maintenance Factor | LSF | Lamp Survival Factor |

^a According to "CIE 97, Maintenance of indoor electric lighting systems", 2005, ISBN 3-900-734-34-8. The values must be determined by the planner.

Components

CANOPY for cable suspension

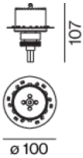
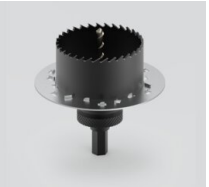
| | | |
|---------------|--------|-------------------|
| COLOUR | Ø (MM) | ARTICLE NUMBER(S) |
| traffic white | 115 | 005-2602197 |



Mounting accessories

SPECIAL MOUNTING TOOL

| | | |
|---|--------|-------------------|
| TYPE | Ø (MM) | ARTICLE NUMBER(S) |
| for ARY MOVE IN 45 NOBA trimless TULA | 100 | 063-8912110 |



RING ceiling mounted

| | | |
|---------------|--------|-------------------|
| COLOUR | Ø (MM) | ARTICLE NUMBER(S) |
| traffic white | 50 | 050-0510217 |
| jet black | 50 | 050-0510218 |



HOOK ceiling mounted

| | | |
|---------------|--------|-------------------|
| COLOUR | Ø (MM) | ARTICLE NUMBER(S) |
| traffic white | 18 | 050-0510317 |
| jet black | 18 | 050-0510318 |



TULA micro suspended

canopy surface

049-5515417F 005-2602197



| | |
|----------------|--|
| Project / Type | |
| Notes | |
| Count / Date | |

Optional electrical accessories

DIN RAIL POWER SUPPLY

| | |
|------------|-------------------|
| L-W-H (MM) | ARTICLE NUMBER(S) |
| 72-90-63 | 005-6520210 |



DIN RAIL LED DRIVER

| | |
|------------|-------------------|
| L-W-H (MM) | ARTICLE NUMBER(S) |
| 36-88-59 | 005-6121030 |



Optical accessories

OVAL LENS

| | | |
|-------------------------------------|--------|-------------------|
| TYPE | Ø (MM) | ARTICLE NUMBER(S) |
| for BO 45 MOVE IN 45 TULA micro | 42 | 007-1965880 |



SOFT LENS

| | | |
|---|--------|-------------------|
| TYPE | Ø (MM) | ARTICLE NUMBER(S) |
| for ARY BO 45 MOVE IN 45 TULA micro | 42 | 007-1965980 |



WALLWASHER LENS

| | | |
|---|--------|-------------------|
| TYPE | Ø (MM) | ARTICLE NUMBER(S) |
| for ARY BO 45 MOVE IN 45 TULA micro | 42 | 007-1965780 |



HONEYCOMB LOUVER

| | | | |
|---|-----------|--------|-------------------|
| TYPE | COLOUR | Ø (MM) | ARTICLE NUMBER(S) |
| for BO 45 JUST 45 MOVE IN 45 TARO 45 TULA micro | jet black | 42 | 007-1965188 |



TULA micro suspended

canopy surface

049-5515417F 005-2602197

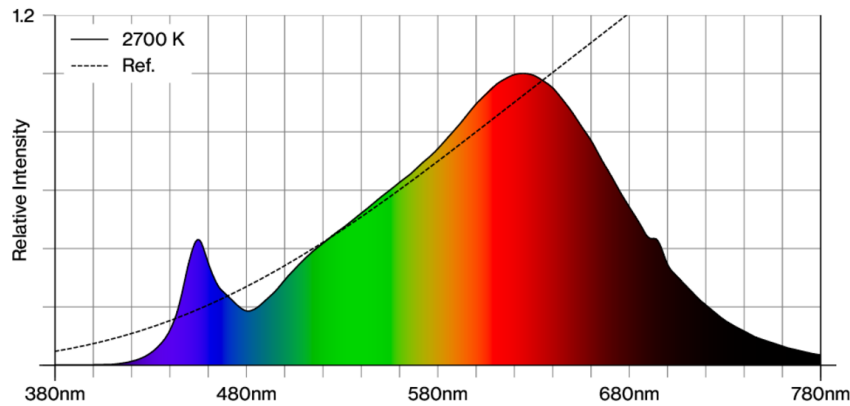


Project / Type

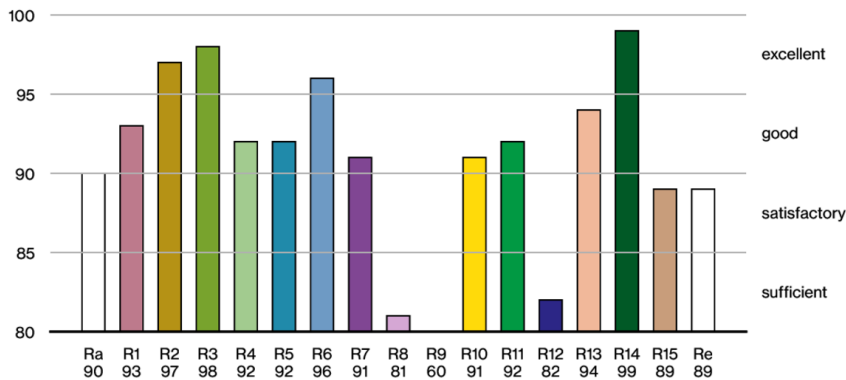
Notes

Count / Date

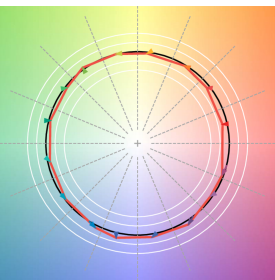
Colour rendering



CRI/R_a ≥ 92 R_e ≥ 89 (2700 K)



TM30 colour vector graphic



The black line represents the black body reference. The red line indicates the results of the test light source. The deviation from the test light source to the reference is shown and is marked by arrows. The shorter the arrows, the higher the color rendering.

