

# MOUNTING HOUSING square

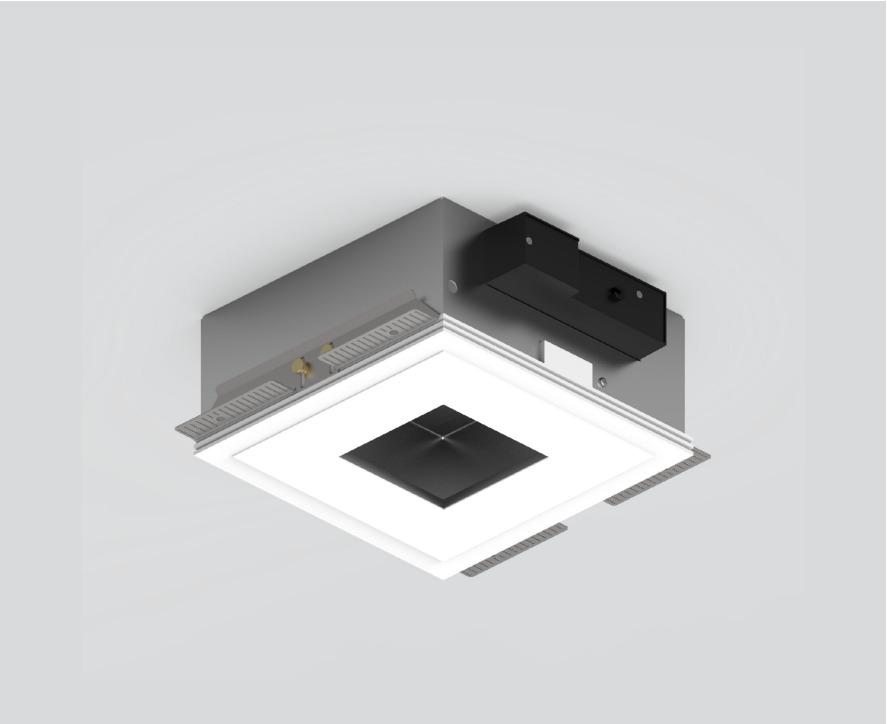
049-8813037



Project / Type

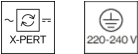
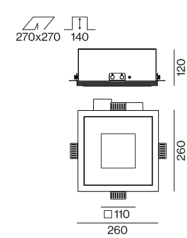
Notes

Count / Date



Recessed housing made of pressed steel sheet for flush installation in plasterboard ceilings, underside of aluminium-reinforced plaster (paintable); with square cut-out; no break-out of edges; for trimless installation in plasterboard ceilings; suitable for ceiling thickness of 8-25 mm; 3 non-reversible plug and play connector sockets for power supply to the spotlights; spotlight can be installed and moved without tools by means of magnetic holders; hot plug protection; surface traffic white powder coated; degree of protection IP20; PC1; incl. DALI-2 converter; all spotlights together DALI dimmable; control gear replaceable by an authorized professional;

## Product drawing



## General

Ceiling | Recessed

traffic white | RAL 9016 <sup>1</sup>

IP20

## Electrical

DALI-2 | 1 DALI Addr.

PC1 | 220-240 V

PC2

25 W

Dim DALI, Push Dim, Dim DSI, Dim Dali 2

min 198 V

max 264 V

Constant Current

min 50 Hz

max 60 Hz

## Physical

length 260 mm | width 260 mm | height 120 mm

## Cutout

length 270 mm | width 270 mm

min. ceiling thickness 8 mm | max. ceiling thickness 25 mm

recessed depth 140 mm

<sup>1</sup> RAL code

## Installation instructions

