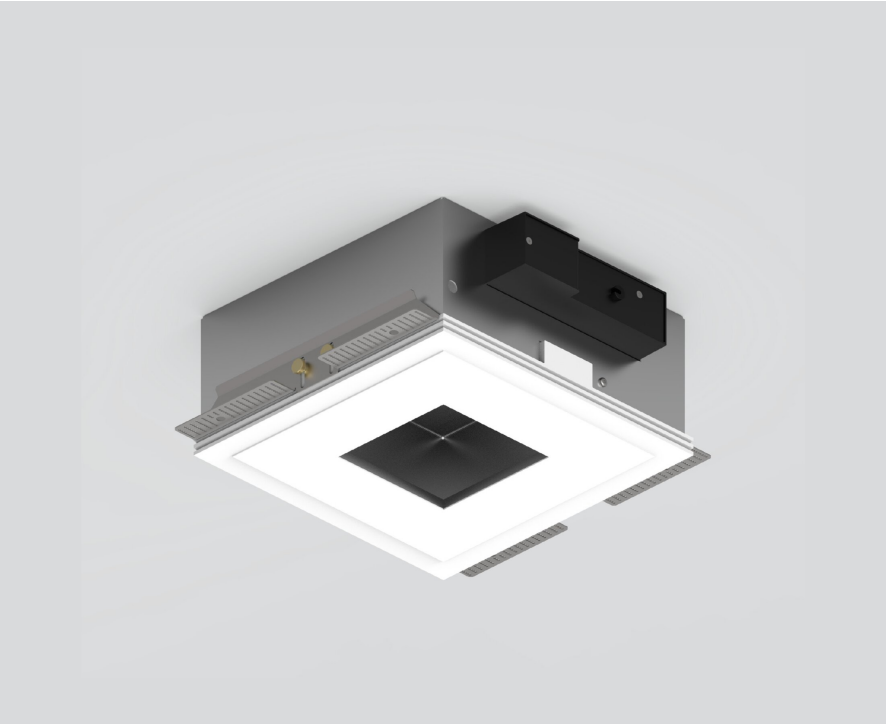


MOUNTING HOUSING square

049-8813037

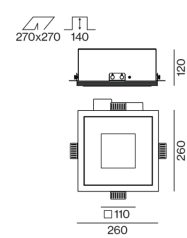


Project / Type	
Notes	
Count / Date	



Recessed housing made of pressed steel sheet for flush installation in plasterboard ceilings, underside of aluminium-reinforced plaster (paintable); with square cut-out; no break-out of edges; for trimless installation in plasterboard ceilings; suitable for ceiling thickness of 8-25 mm; 3 non-reversible plug and play connector sockets for power supply to the spotlights; spotlight can be installed and moved without tools by means of magnetic holders; hot plug protection; surface traffic white powder coated; degree of protection IP20; PC1; incl. DALI-2 converter; all spotlights together DALI dimmable; control gear replaceable by an authorized professional;

Product drawing



General

Ceiling Recessed
traffic white RAL 9016 ¹
IP20

Electrical

DALI-2 1 DALI Addr.
PC1 220-240 V
PC2
25 W
Dim DALI, Push Dim, Dim DSI, Dim Dali 2
min 198 V
max 264 V
Constant Current
min 50 Hz
max 60 Hz

Physical

length 260 mm width 260 mm height 120 mm
--

Cutout

length 270 mm width 270 mm
min. ceiling thickness 8 mm max. ceiling thickness 25 mm
recessed depth 140 mm

¹ RAL code

Installation instructions



MOUNTING HOUSING square

049-8813037



Project / Type

Notes

Count / Date

Circuit Breaker Types

Automatic Circuit Breaker Type	Number of Converters
B10	19
B13	24
B16	31
B20	40
C10	31
C13	40
C16	51
C20	66

