

# MOUNTING HOUSING with glowing round

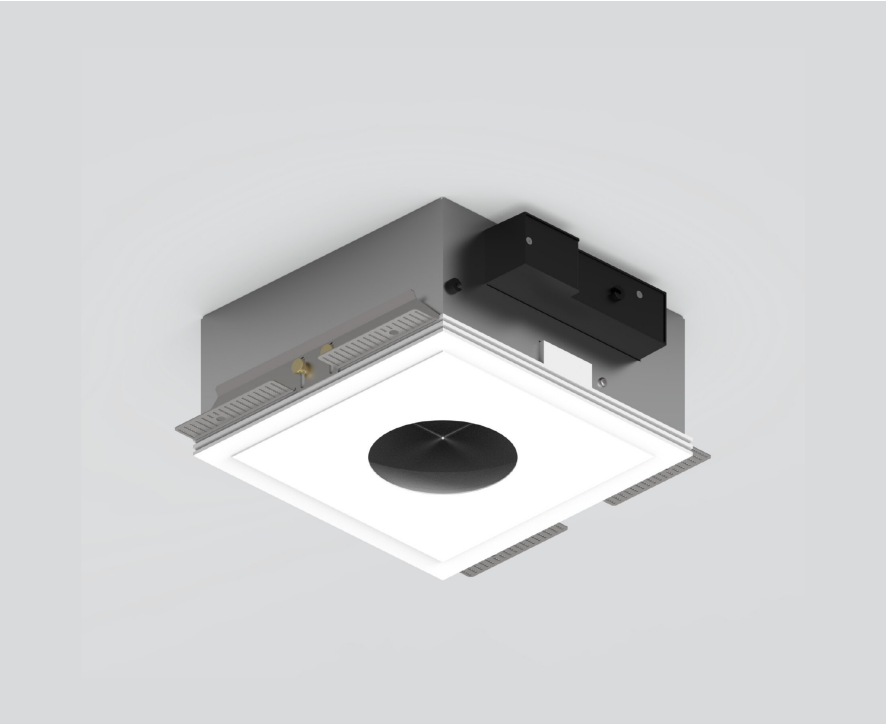
049-8823537



Project / Type

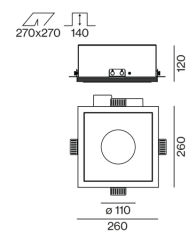
Notes

Count / Date



Recessed housing made of pressed steel sheet for flush installation in plasterboard ceilings, underside of aluminium-reinforced plaster (paintable); with round cut-out; no break-out of edges; for trimless installation in plasterboard ceilings; suitable for ceiling thickness of 8-25 mm; 3 non-reversible plug and play connector sockets for power supply to the spotlights; spotlight can be installed and moved without tools by means of magnetic holders; hot plug protection; indirect light component in housing; light colour 3000 K; binning initial MacAdam  $\leq 3$  SDCM; CRI  $\geq 90$ ; min. 80% of luminous flux after 50000 operating hours; energy efficient LEDs with high CRI; indirect component in the channel continuously adjustable dimming via DALI; surface traffic white powder coated; degree of protection IP20; PC1; incl. DALI-2 converter; all spotlights together DALI dimmable; light source replaceable by an authorized professional; control gear replaceable by an authorized professional;

## Product drawing



## General

Ceiling | Recessed

traffic white | RAL 9016

IP20

## LED

3000 K

CRI  $\geq 90$

initial MacAdam  $\leq 3$  SDCM

R<sub>g</sub>: 101 | R<sub>f</sub>: 91 | R<sub>t(1-15)</sub>: 89

MR 0.56 | MDER 0.51

## Optical

PstLM  $\leq 1.0$  <sup>1</sup> | SVM  $\leq 0.4$  <sup>1</sup>

## Electrical

DALI-2 | 1 DALI Addr.

PC1 | 220-240 V

PC2

25 W

Dim DALI, Push Dim, Dim DSI, Dim Dali 2

min 198 V AC

max 264 V AC

Constant Current

min 50 Hz

max 60 Hz

## Physical

length 260 mm | width 260 mm | height 120 mm

## Cutout

length 270 mm | width 270 mm

min. ceiling thickness 8 mm | max. ceiling thickness 25 mm

recessed depth 140 mm

<sup>1</sup> Value of containing product at full load (undimmed)

## Installation instructions

