

MOUNTING HOUSING with glowing round

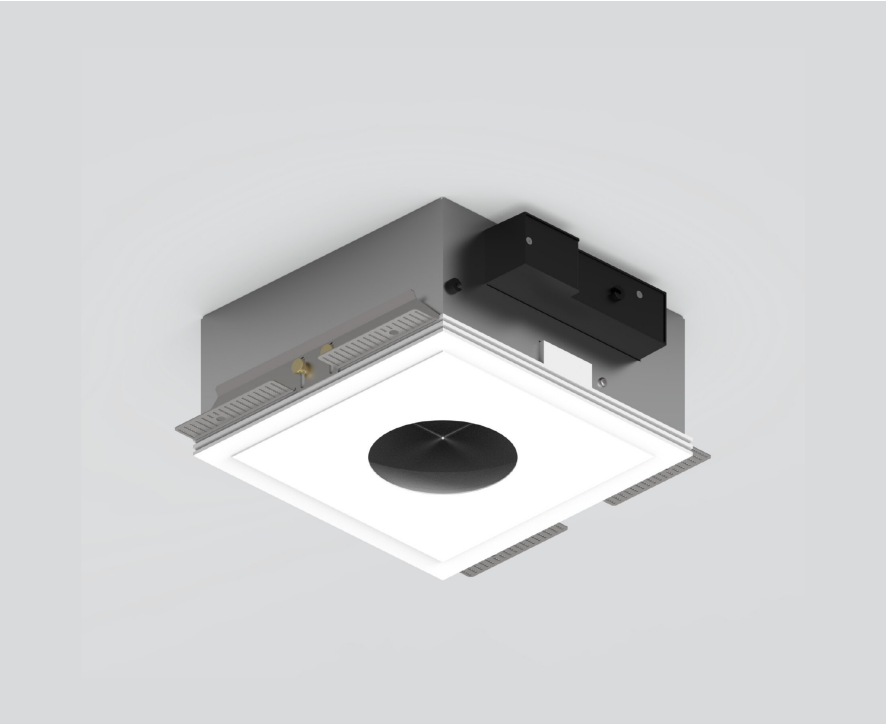
049-8823537



Project / Type

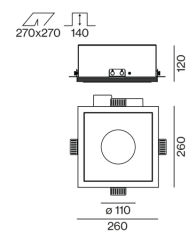
Notes

Count / Date



Recessed housing made of pressed steel sheet for flush installation in plasterboard ceilings, underside of aluminium-reinforced plaster (paintable); with round cut-out; no break-out of edges; for trimless installation in plasterboard ceilings; suitable for ceiling thickness of 8-25 mm; 3 non-reversible plug and play connector sockets for power supply to the spotlights; spotlight can be installed and moved without tools by means of magnetic holders; hot plug protection; indirect light component in housing; light colour 3000 K; binning initial MacAdam ≤ 3 SDCM; CRI ≥ 90 ; min. 80% of luminous flux after 50000 operating hours; energy efficient LEDs with high CRI; indirect component in the channel continuously adjustable dimming via DALI; surface traffic white powder coated; degree of protection IP20; PC1; incl. DALI-2 converter; all spotlights together DALI dimmable; light source replaceable by an authorized professional; control gear replaceable by an authorized professional;

Product drawing



General

Ceiling | Recessed

traffic white | RAL 9016

IP20

LED

3000 K

CRI ≥ 90

initial MacAdam ≤ 3 SDCM

R_g: 101 | R_f: 91 | R_{t1-15}: 89

MR 0.56 | MDER 0.51

Optical

PstLM ≤ 1.0 ¹ | SVM ≤ 0.4 ¹

Electrical

DALI-2 | 1 DALI Addr.

PC1 | 220-240 V

PC2

25 W

Dim DALI, Push Dim, Dim DSI, Dim Dali 2

min 198 V AC

max 264 V AC

Constant Current

min 50 Hz

max 60 Hz

Physical

length 260 mm | width 260 mm | height 120 mm

Cutout

length 270 mm | width 270 mm

min. ceiling thickness 8 mm | max. ceiling thickness 25 mm

recessed depth 140 mm

¹ Value of containing product at full load (undimmed)

Installation instructions



MOUNTING HOUSING with glowing round

049-8823537



Project / Type

Notes

Count / Date

Maintenance Factors

Operating Time [h]	10 000	20 000	30 000	40 000	50 000
LLMF	0.96	0.93	0.89	0.86	0.83
LSF	1	1	1	1	1
MF	LMF × RSMF × LLMF × LSF		RSMF ^a	Room Surface Maintenance Factor	
MF	Maintenance Factor		LLMF	Lamp Lumens Maintenance Factor	
LMF ^a	Luminaire Maintenance Factor		LSF	Lamp Survival Factor	

^a According to "CIE 97, Maintenance of indoor electric lighting systems", 2005, ISBN 3-900-734-34-8. The values must be determined by the planner.

Circuit Breaker Types

Automatic Circuit Breaker Type	Number of Converters
B10	19
B13	24
B16	31
B20	40
C10	31
C13	40
C16	51
C20	66

