

# MOUNTING HOUSING

## 300 trimless linear

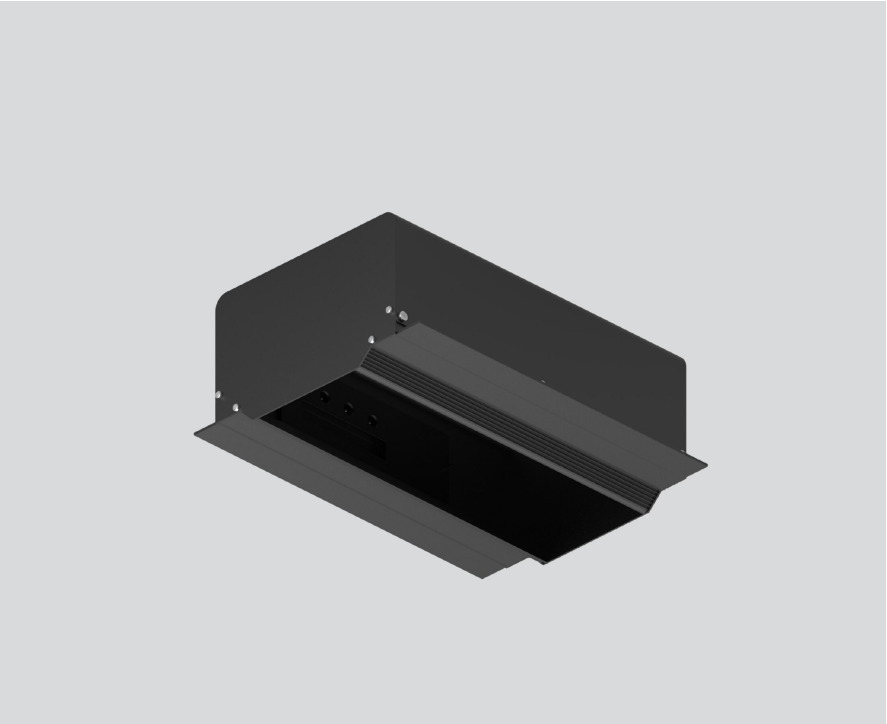
049-8843038



Project / Type

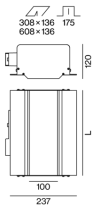
Notes

Count / Date



Installation housing in pressed steel sheet with rectangular cut-out; for trimless installation in plasterboard ceilings; special edge design with perforations for better adhesion of filler; suitable for ceiling thickness of 12.5 mm; 3 non-reversible plug and play connector sockets for power supply to the spotlights; spotlight can be installed and moved without tools by means of magnetic holders; hot plug protection; surface jet black powder coated; degree of protection IP20; PC1; incl. DALI-2 converter; all spotlights together DALI dimmable; control gear replaceable by an authorized professional;

### Product drawing



### General

Ceiling | Recessed

jet black | RAL 9005

IP20

### Electrical

DALI-2 | 1 DALI Addr.

PC1 | 220-240 V

PC2

25 W

Dim DALI, Push Dim, Dim DSI, Dim Dali 2

min 198 V AC

max 264 V AC

Constant Current

min 50 Hz

max 60 Hz

### Physical

length 308 mm | width 252 mm | height 120 mm

### Cutout

length 308 mm | width 136 mm

min. ceiling thickness 12.5 mm | max. ceiling thickness 12.5 mm

recessed depth 175 mm

### Installation instructions



# MOUNTING HOUSING

## 300 trimless linear

049-8843038



Project / Type

Notes

Count / Date

### Circuit Breaker Types

Automatic Circuit Breaker Type	Number of Converters
B10	19
B13	24
B16	31
B20	40
C10	31
C13	40
C16	51
C20	66

