

# MOUNTING HOUSING

## 600 trimless linear

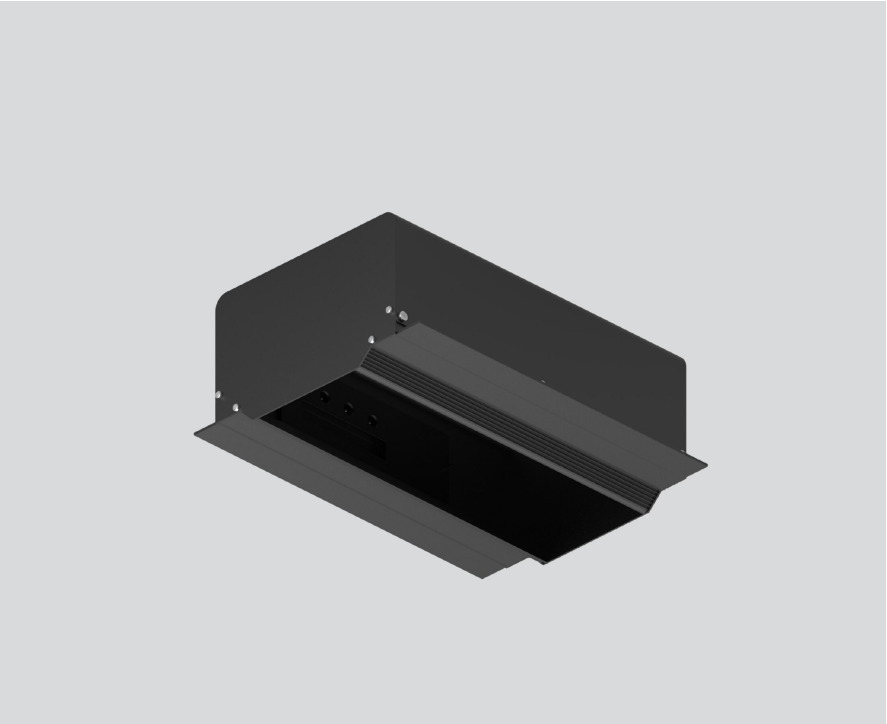
049-8846038



Project / Type \_\_\_\_\_

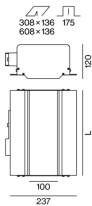
Notes \_\_\_\_\_

Count / Date \_\_\_\_\_



Installation housing in pressed steel sheet with rectangular cut-out; for trimless installation in plasterboard ceilings; special edge design with perforations for better adhesion of filler; suitable for ceiling thickness of 12.5 mm; 6 non-reversible plug and play connector sockets for power supply to the spotlights; spotlight can be installed and moved without tools by means of magnetic holders; hot plug protection; surface jet black powder coated; degree of protection IP20; PC1; incl. DALI-2 converter; all spotlights together DALI dimmable; control gear replaceable by an authorized professional;

### Product drawing



### General

Ceiling | Recessed \_\_\_\_\_

jet black | RAL 9005 <sup>1</sup> \_\_\_\_\_

IP20 \_\_\_\_\_

### Electrical

DALI-2 | 2 DALI Addr. \_\_\_\_\_

PC1 | 220-240 V \_\_\_\_\_

PC2 \_\_\_\_\_

25 W \_\_\_\_\_

Dim DALI, Push Dim, Dim DSI, Dim Dali 2 \_\_\_\_\_

min 198 V \_\_\_\_\_

max 264 V \_\_\_\_\_

Constant Current \_\_\_\_\_

min 50 Hz \_\_\_\_\_

max 60 Hz \_\_\_\_\_

### Physical

length 608 mm | width 269 mm | height 120 mm \_\_\_\_\_

### Cutout

length 608 mm | width 136 mm \_\_\_\_\_

min. ceiling thickness 12.5 mm | max. ceiling thickness 12.5 mm \_\_\_\_\_

recessed depth 175 mm \_\_\_\_\_

<sup>1</sup> RAL code

### Installation instructions

