

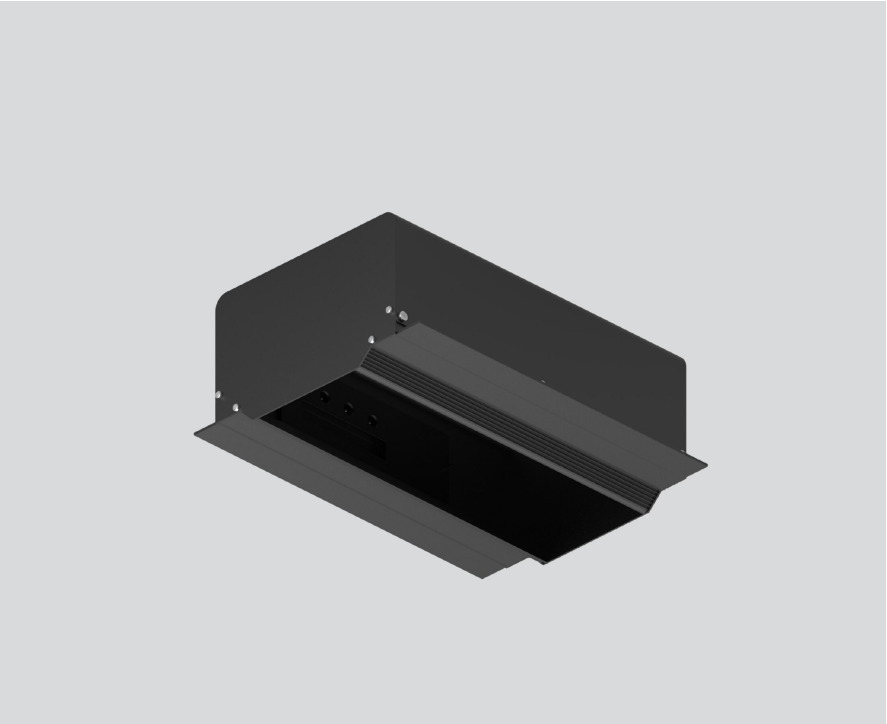
MOUNTING HOUSING

600 trimless linear

049-8846038

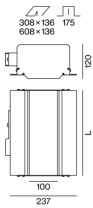


Project / Type	
Notes	
Count / Date	



Installation housing in pressed steel sheet with rectangular cut-out; for trimless installation in plasterboard ceilings; special edge design with perforations for better adhesion of filler; suitable for ceiling thickness of 12.5 mm; 6 non-reversible plug and play connector sockets for power supply to the spotlights; spotlight can be installed and moved without tools by means of magnetic holders; hot plug protection; surface jet black powder coated; degree of protection IP20; PC1; incl. DALI-2 converter; all spotlights together DALI dimmable; control gear replaceable by an authorized professional;

Product drawing



General

Ceiling Recessed	
jet black RAL 9005 ¹	
IP20	

Electrical

DALI-2 2 DALI Addr.	
PC1 220-240 V	
PC2	
25 W	
Dim DALI, Push Dim, Dim DSI, Dim Dali 2	
min 198 V	
max 264 V	
Constant Current	
min 50 Hz	
max 60 Hz	

Physical

length 608 mm width 269 mm height 120 mm	
--	--

Cutout

length 608 mm width 136 mm	
min. ceiling thickness 12.5 mm max. ceiling thickness 12.5 mm	
recessed depth 175 mm	

¹ RAL code

Installation instructions

