

MOUNTING HOUSING

600 trimless linear

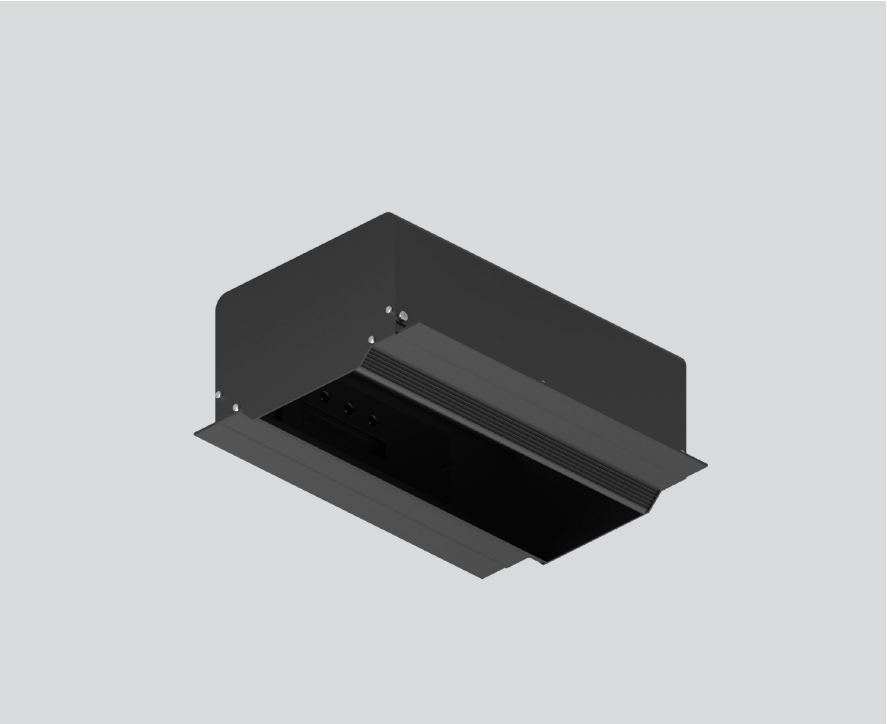
049-8846038



Project / Type _____

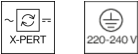
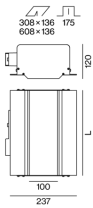
Notes _____

Count / Date _____



Installation housing in pressed steel sheet with rectangular cut-out; for trimless installation in plasterboard ceilings; special edge design with perforations for better adhesion of filler; suitable for ceiling thickness of 12.5 mm; 6 non-reversible plug and play connector sockets for power supply to the spotlights; spotlight can be installed and moved without tools by means of magnetic holders; hot plug protection; surface jet black powder coated; degree of protection IP20; PC1; incl. DALI-2 converter; all spotlights together DALI dimmable; control gear replaceable by an authorized professional;

Product drawing



General

Ceiling | Recessed _____

jet black | RAL 9005 ¹ _____

IP20 _____

Electrical

DALI-2 | 2 DALI Addr. _____

PC1 | 220-240 V _____

PC2 _____

25 W _____

Dim DALI, Push Dim, Dim DSI, Dim Dali 2 _____

min 198 V _____

max 264 V _____

Constant Current _____

min 50 Hz _____

max 60 Hz _____

Physical

length 608 mm | width 269 mm | height 120 mm _____

Cutout

length 608 mm | width 136 mm _____

min. ceiling thickness 12.5 mm | max. ceiling thickness 12.5 mm _____

recessed depth 175 mm _____

¹ RAL code

Installation instructions



MOUNTING HOUSING

600 trimless linear

049-8846038



Project / Type

Notes

Count / Date

Circuit Breaker Types

Automatic Circuit Breaker Type	Number of Converters
B10	19
B13	24
B16	31
B20	40
C10	31
C13	40
C16	51
C20	66

