

# MOUNTING HOUSING

## 300 trim linear

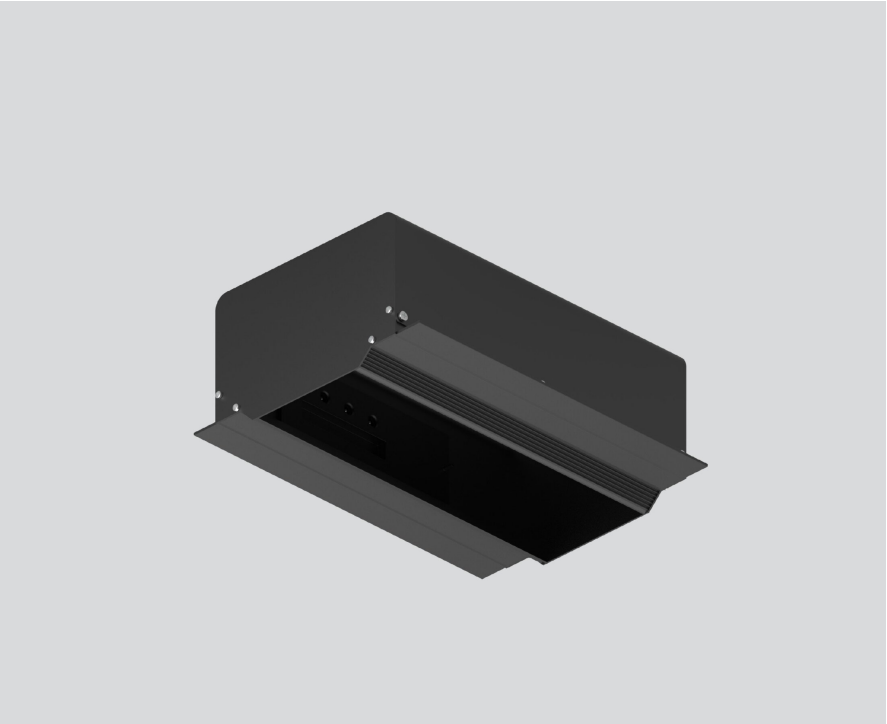
049-8853038



Project / Type

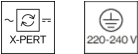
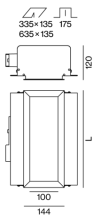
Notes

Count / Date



Installation housing in pressed steel sheet with rectangular cut-out; with wrap around edge; suitable for ceiling thickness of 12.5 mm; 3 non-reversible plug and play connector sockets for power supply to the spotlights; spotlight can be installed and moved without tools by means of magnetic holders; hot plug protection; surface jet black powder coated; degree of protection IP20; PC1; incl. DALI-2 converter; all spotlights together DALI dimmable; control gear replaceable by an authorized professional;

### Product drawing



### General

Ceiling | Recessed

jet black | RAL 9005 <sup>1</sup>

IP20

### Electrical

DALI-2 | 1 DALI Addr.

PC1 | 220-240 V

PC2

25 W

Dim DALI, Push Dim, Dim DSI, Dim Dali 2

min 198 V

max 264 V

Constant Current

min 50 Hz

max 60 Hz

### Physical

length 344 mm | width 254 mm | height 120 mm

### Cutout

length 335 mm | width 135 mm

min. ceiling thickness 12.5 mm | max. ceiling thickness 12.5 mm

recessed depth 175 mm

<sup>1</sup> RAL code

### Installation instructions

