

MOUNTING HOUSING

600 trim linear

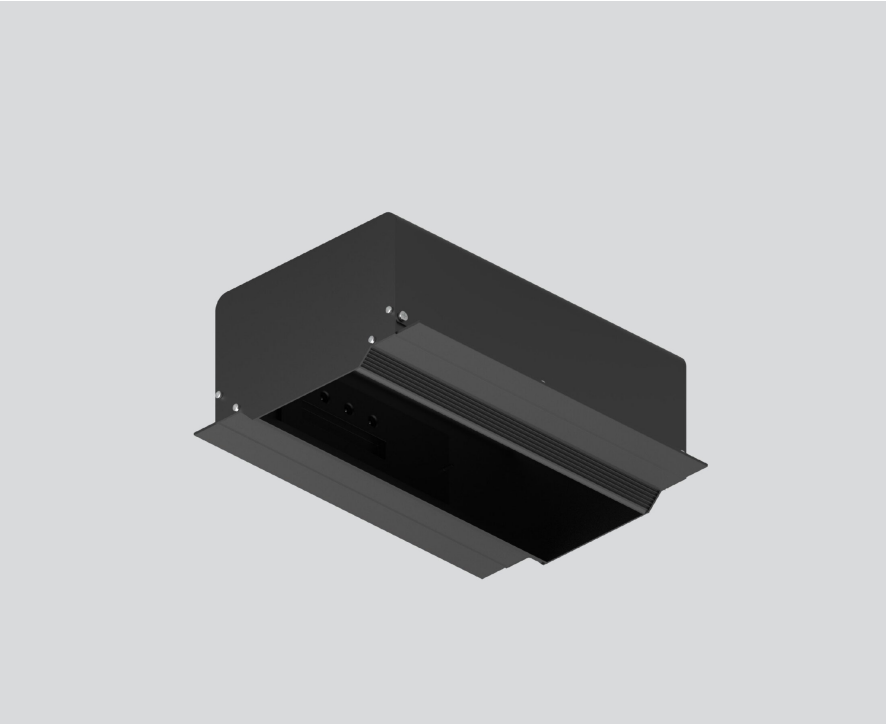
049-8856038



Project / Type

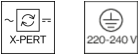
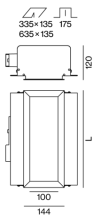
Notes

Count / Date



Installation housing in pressed steel sheet with rectangular cut-out; with wrap around edge; suitable for ceiling thickness of 12.5 mm; 6 non-reversible plug and play connector sockets for power supply to the spotlights; spotlight can be installed and moved without tools by means of magnetic holders; hot plug protection; surface jet black powder coated; degree of protection IP20; PC1; incl. DALI-2 converter; all spotlights together DALI dimmable; control gear replaceable by an authorized professional;

Product drawing



General

Ceiling | Recessed

jet black | RAL 9005 ¹

IP20

Electrical

DALI-2 | 2 DALI Addr.

PC1 | 220-240 V

PC2

25 W

Dim DALI, Push Dim, Dim DSI, Dim Dali 2

min 198 V

max 264 V

Constant Current

min 50 Hz

max 60 Hz

Physical

length 644 mm | width 271 mm | height 120 mm

Cutout

length 635 mm | width 135 mm

min. ceiling thickness 12.5 mm | max. ceiling thickness 12.5 mm

recessed depth 175 mm

¹ RAL code

Installation instructions



MOUNTING HOUSING

600 trim linear

049-8856038



Project / Type

Notes

Count / Date

Circuit Breaker Types

Automatic Circuit Breaker Type	Number of Converters
B10	19
B13	24
B16	31
B20	40
C10	31
C13	40
C16	51
C20	66

