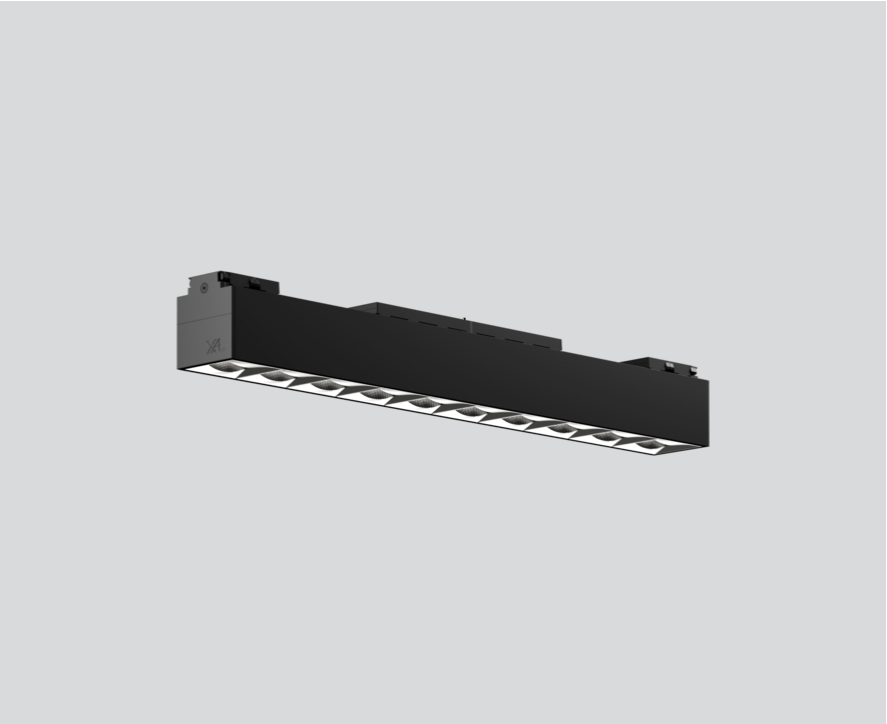




Project / Type _____

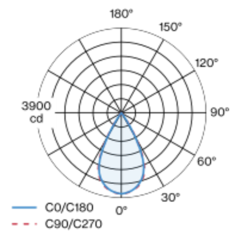
Notes _____

Count / Date _____

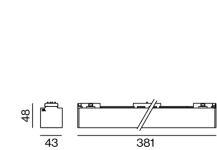


Linear light inset made of aluminium; surface anodised black; light inset can be installed and moved without tools by means of magnetic holders+locking; flush with profile system; power supplied via MOVE IT system track profile; hot plug protection; equipped with ten specially computed OFFICE light elements; high quality reflector with micro-faceted, aluminum-vaporised surface; Reflector chrome; precise radiation characteristic with symmetrical light distribution; $UGR \leq 16$; VDU compatible workplace luminaire according to DIN EN 12464-1; luminance above $65^\circ \leq 1500 \text{ cd/m}^2$; passive cooling of the LEDs through improved heat sink geometry; light colour 3000 K; binning initial MacAdam $\leq 3 \text{ SDCM}$; $CRI \geq 90$; min. 85% of luminous flux after 50000 operating hours; energy-efficient high power LEDs with very good colour rendering; degree of protection IP20; PC3; 48 V; DALI single control; flicker-free visual comfort through analogue current control (minimum value 1%); light source not replaceable;

Light distribution



Product drawing



General

Ceiling , Track _____

black , RAL 9005 ¹ _____

Reflector chrome _____

IP20 _____

2890 lm _____

optical inset 113 lm/W² _____

LED

3000 K _____

$CRI \geq 90$ _____

L85 / 50000 h _____

initial MacAdam $\leq 3 \text{ SDCM}$ _____

$R_g: 97, R_f: 91, R_{(1-15)}: 89$ _____

MR 0.6 _____

MDER 0.54 _____

Optical

symmetric _____

beam angle 55° _____

$UGR \leq 16, \geq 65^\circ < 1500 \text{ cd/m}^2$ _____

$P_{stLM} \leq 1.0^3$ _____

$SVM \leq 0.4^3$ _____

Electrical

DALI-2 _____

48 V _____

fixture 30 W _____

optical inset 25.5 W _____

PC3 _____

1 DALI Addr. _____

Physical

length 381 mm _____

width 43 mm _____

height 48 mm _____

0.5 kg _____

¹ RAL code ² incl. consideration of optical losses
³ Value of containing product at full load (undimmed)

Installation instructions



Lighting calculator

