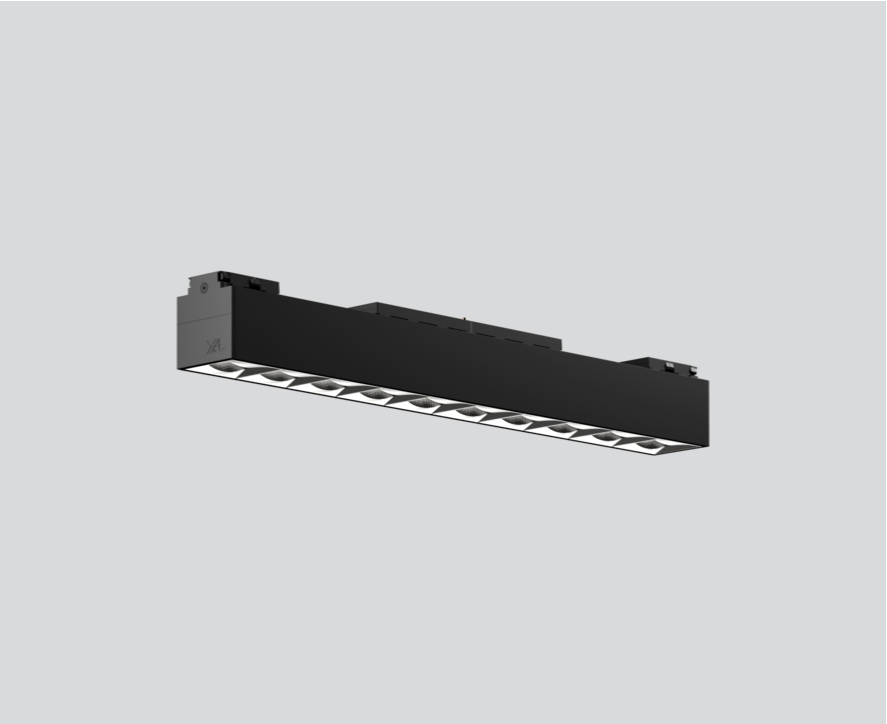




Project / Type

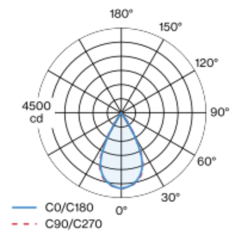
Notes

Count / Date

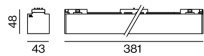


Linear light inset made of aluminium; surface anodised black; light inset can be installed and moved without tools by means of magnetic holders+locking; flush with profile system; power supplied via MOVE IT system track profile; hot plug protection; equipped with ten specially computed OFFICE light elements; high quality reflector with micro-faceted, aluminum-vaporised surface; Reflector chrome; precise radiation characteristic with symmetrical light distribution; $UGR \leq 16$; VDU compatible workplace luminaire according to DIN EN 12464-1; luminance above $65^\circ \leq 1500 \text{ cd/m}^2$; passive cooling of the LEDs through improved heat sink geometry; light colour 4000 K; binning initial MacAdam $\leq 3 \text{ SDCM}$; $CRI \geq 90$; min. 85% of luminous flux after 50000 operating hours; energy-efficient high power LEDs with very good colour rendering; degree of protection IP20; PC3; 48 V; DALI single control; flicker-free visual comfort through analogue current control (minimum value 1%); light source not replaceable;

Light distribution



Product drawing



General

Ceiling | Track

black | RAL 9005 ¹

Reflector chrome

IP20

3110 lm

optical inset 122 lm/W ²

LED

4000 K

$CRI \geq 90$

L85 / 50000 h

initial MacAdam $\leq 3 \text{ SDCM}$

R_g: 94 | R_f: 87 | R₍₁₋₁₅₎: 86

MR 0.8 | MDER 0.72

Optical

symmetric | beam angle 55°

$UGR \leq 16$ | $\geq 65^\circ < 1500 \text{ cd/m}^2$

PstLM ≤ 1.0 ³ | SVM ≤ 0.4 ³

Electrical

DALI-2 | 1 DALI Addr.

PC3 | 48 V

fixture 30 W

optical inset 25.5 W

Physical

length 381 mm | width 43 mm | height 48 mm

0.52 kg

¹ RAL code ² incl. consideration of optical losses
³ Value of containing product at full load (undimmed)

Installation instructions



Lighting calculator





Project / Type

Notes

Count / Date

Maintenance Factors

Operating Time [h]	10 000	20 000	30 000	40 000	50 000
LLMF	0.98	0.94	0.91	0.88	0.85
LSF	1	1	1	1	1

MF

MF

LMF^a

LMF × RSMF × LLMF × LSF

Maintenance Factor

Luminaire Maintenance Factor

RSMF^a

LLMF

LSF

Room Surface Maintenance Factor

Lamp Lumens Maintenance Factor

Lamp Survival Factor

^a According to "CIE 97, Maintenance of indoor electric lighting systems", 2005, ISBN 3-900-734-34-8. The values must be determined by the planner.