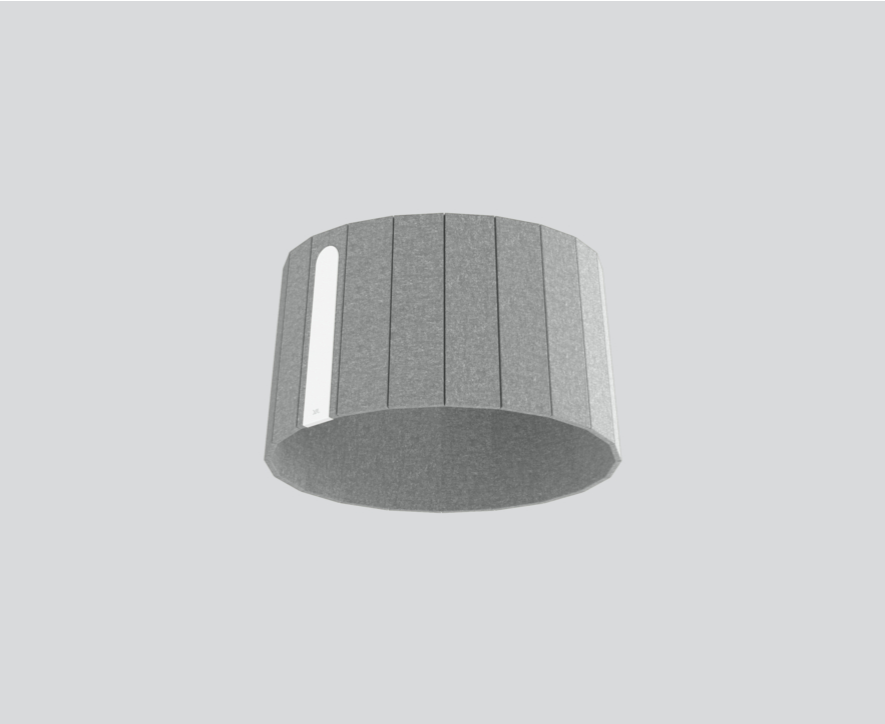




Project / Type

Notes

Count / Date



General

Luminaire / Track | Mounted

felt grey

Physical

diameter 527 mm | height 300 mm

1 kg

Acoustics

Alpha w (α_w) up to 0.6 ¹

SAC (sound absorption class) up to C ¹

NRC up to 0.6 ¹

SAA up to 0.58 ¹

¹ Acoustic data calculations based on SONIC ACOUSTIC SOUNDCAP, cavity 174cm

Installation instructions



Acoustically effective lampshade made of high quality, self-supporting, at least 50 % recycled PET felt with sound absorbing properties; high quality visual and tactile surface, felt grey; colour may deviate; for attaching to SONIC suspended or SONIC free standing; subsequent attachment possible;

Product drawing





Project / Type

Notes

Count / Date

Equivalent sound absorption area (A_{eq})

| 125 HZ | 250 HZ | 500 HZ | 1000 HZ | 2000 HZ | 4000 HZ |
|--------|--------|--------|---------|---------|---------|
| 0.17 | 0.47 | 0.53 | 0.53 | 0.63 | 0.73 |

Sound absorption coefficient (α_p)

