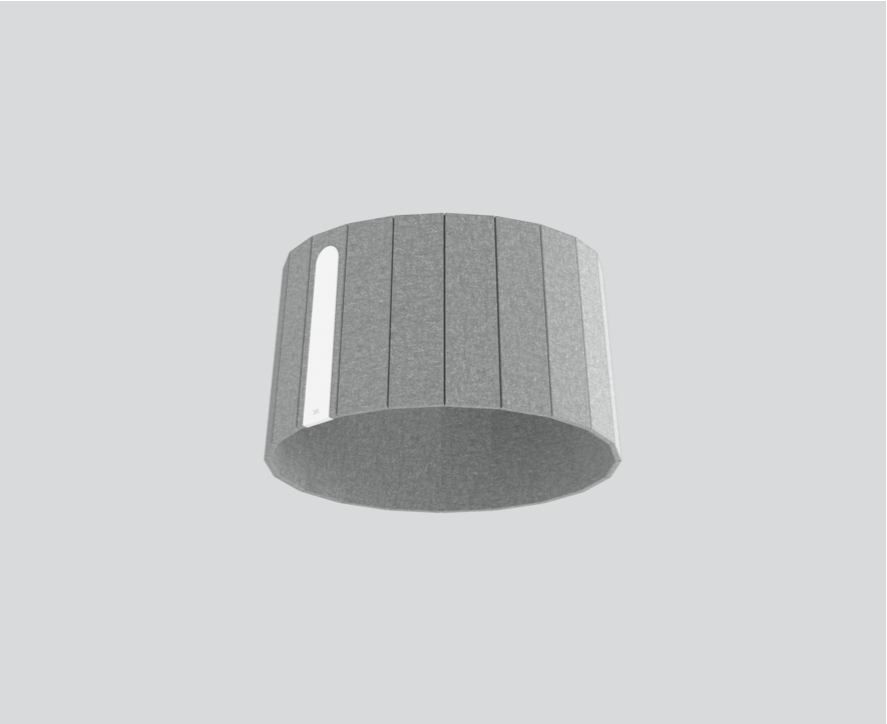




Project / Type

Notes

Count / Date



Acoustically effective lampshade made of high quality, self-supporting, at least 50 % recycled PET felt with sound absorbing properties; high quality visual and tactile surface, felt grey; colour may deviate; for attaching to SONIC suspended or SONIC free standing; subsequent attachment possible;

Product drawing



General

Luminaire / Track | Mounted

felt grey

Physical

diameter 527 mm | height 300 mm

1 kg

Acoustics

Alpha w ( $\alpha_w$ ) up to 0.6 <sup>1</sup>

SAC (sound absorption class) up to C <sup>1</sup>

NRC up to 0.6 <sup>1</sup>

SAA up to 0.58 <sup>1</sup>

<sup>1</sup> Acoustic data calculations based on SONIC ACOUSTIC SOUNDCAP, cavity 174cm

Installation instructions

