

# UNICO Q9 basic

trimless

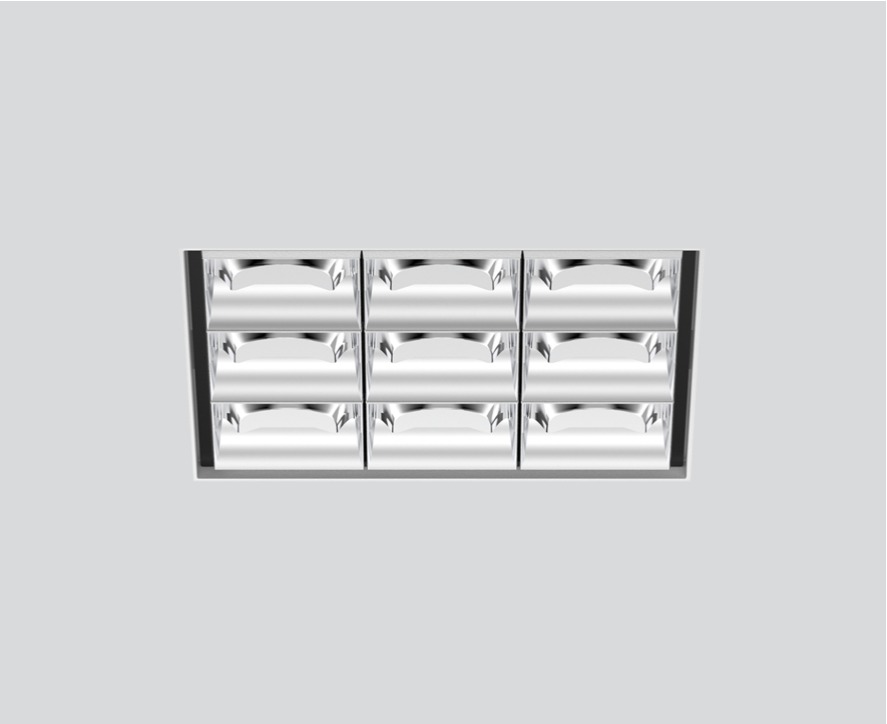
090-7Q96190022 090-7Q90100



Project / Type

Notes

Count / Date



### General

Ceiling | Recessed

chrome reflector

IP20

2940 lm

### LED

4000 K

CRI ≥ 90

L90 / 50000 h

initial MacAdam ≤ 3 SDCM

R<sub>g</sub>: 102 | R<sub>f</sub>: 93 | R<sub>(1-15)</sub>: 92

MR 0.81 | MDER 0.74

### Optical

wallwasher floor

### Electrical

non DIM

PC2 | 220-240 V

system 29.9 W

system 98 lm/W <sup>1</sup>

### Physical

trimless

length 122 mm | width 122 mm | height 51 mm

0.83 kg

### Cutout

length 130 mm | width 130 mm

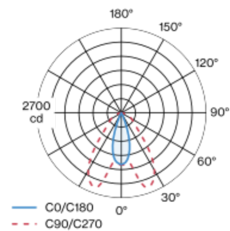
min. ceiling thickness 12.5 mm | max. ceiling thickness 25 mm

recessed depth 90 mm

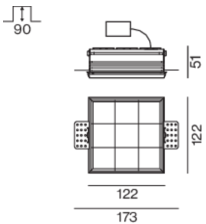
<sup>1</sup> incl. consideration of optical losses, internal control unit losses & operating device efficiency

Square recessed multi-downlight made of die-cast aluminium; installation without tools in mounting set due to patented ball catch system; square installation housing; for trimless installation in plasterboard ceilings; suitable for ceiling thickness of 12.5/15/20/25 mm; equipped with three wallwasher light elements 180° + three wallwasher light elements 0° + three rectangular medium light elements; precise radiation characteristic; high quality reflector with micro-faceted, aluminum-vaporised surface; chrome reflector; passive cooling of the LEDs through improved heat sink geometry; light colour 4000 K; binning initial MacAdam ≤ 3 SDCM; CRI ≥ 90; min. 90% of luminous flux after 50000 operating hours; energy-efficient high power LEDs with very good colour rendering; degree of protection IP20; PC2; 220-240 V; incl. converter, non dimmable; through wiring connection box, 3-pole or 5-pole, available as an accessory; accessories are listed separately; light source not replaceable; control gear replaceable by an authorized professional; clank-free;

### Light distribution



### Product drawing



### Installation instructions



### Lighting calculator

