

# SQUADRO 1 × 4 lamps wallwasher

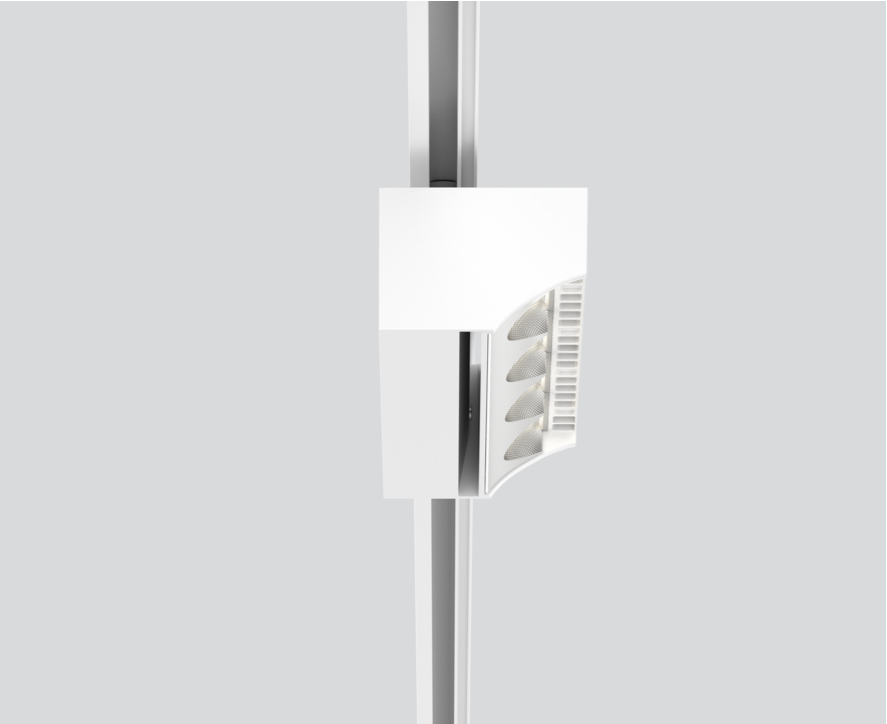
track  
149-2231517A



Project / Type

Notes

Count / Date



Tracked spotlight in die cast aluminium with 4-lamp design; surface white powder coated; converter integrated into spotlight head; heat sink integrated into luminaire geometry for optimum thermal management and passive cooling of LEDs; with COB (Chip on Board) technology for maximum efficiency; light colour 3000 K; binning initial MacAdam  $\leq 3$  SDCM; CRI  $\geq 80$ ; min. 80% of luminous flux after 50000 operating hours; energy efficient LEDs with high CRI; aisle spotlight wall floor washer with special, multi-free-form, facet effect surface reflectors for high precision light control; precise shelf and aisle zone lighting, optimum longitudinal glare control for high viewing comfort in the aisle zone; adjustable light module (tiltable  $+15^\circ$  to  $-15^\circ$ );  $365^\circ$  rotatable; degree of protection IP20; IP 40 protection glass available as an accessory; accessories are listed separately; PC1; 220-240 V; incl. converter, non dimmable; adapter for toolless insertion or movement on a variety of 3-phase power tracks; including attachment for linear alignment of the spotlights; light source replaceable by an authorized professional; control gear replaceable by an authorized professional;



General

Ceiling | Track

tilt min  $15^\circ$

tilt max  $15^\circ$

rotation  $365^\circ$

white

IP20

6100 lm

LED

3000 K

CRI  $\geq 80$

L80 / 50000 h

initial MacAdam  $\leq 3$  SDCM

MR 0.58 | MDER 0.52

Optical

wall floor washer

PstLM  $\leq 1.0$ <sup>1</sup> | SVM  $\leq 0.4$ <sup>1</sup>

Electrical

non DIM

PC1 | 220-240 V

system 51 W

system 120 lm/W<sup>2</sup>

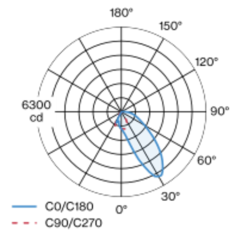
Physical

length 258 mm | width 104 mm | height 76 mm

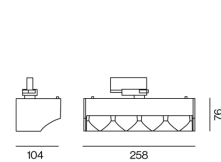
1.4 kg

<sup>1</sup> Value of containing product at full load (undimmed)  
<sup>2</sup> incl. consideration of optical losses, internal control unit losses & operating device efficiency

## Light distribution



## Product drawing



Installation instructions

Lighting calculator



# SQUADRO 1 × 4 lamps wallwasher

track  
149-2231517A



Project / Type

Notes

Count / Date

### Circuit Breaker Types

Automatic Circuit Breaker Type	Number of Fixtures
B10	5
B13	7
B16	10
B20	12
C10	10
C13	15
C16	20
C20	24

### Optical accessories

#### IP40 PROTECTION GLASS

ARTICLE NUMBER(S)  
049-2930010

