

SQUADRO 1 × 4 lamps wallwasher

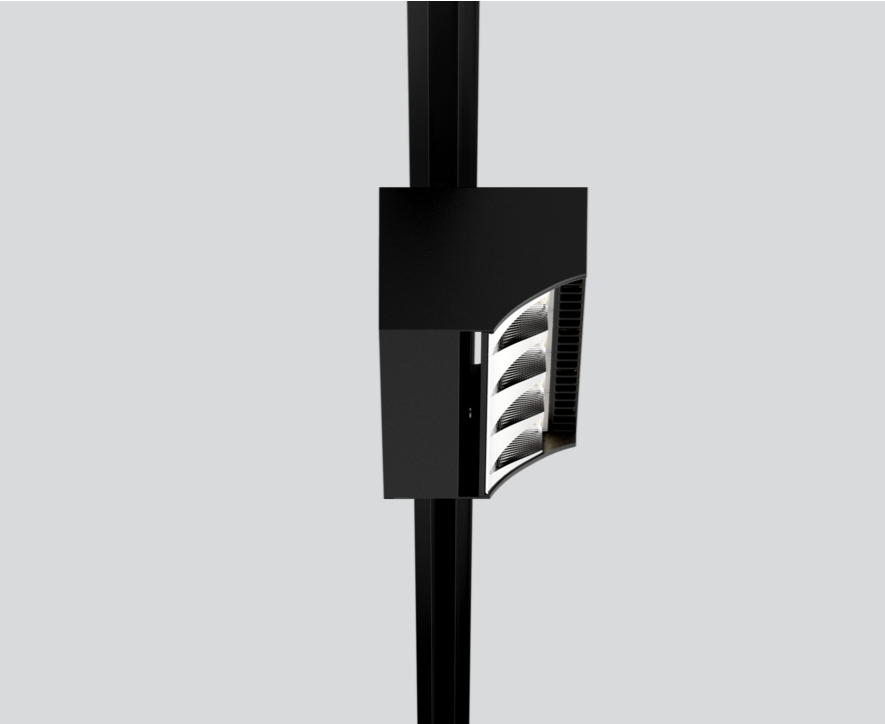
track
149-2231538S



Project / Type

Notes

Count / Date



220-240V

General

Ceiling , Track

tilt min 15°

tilt max 15°

rotation 365°

black

IP20

6010 lm

LED

3000 K

CRI ≥ 80

L80 / 50000 h

initial MacAdam ≤ 3 SDCM

MR 0.58

MDER 0.52

Optical

shelf floor washer

PstLM ≤ 1.0 ¹

SVM ≤ 0.4 ¹

Electrical

DALI-2

51 W

PC1 220-240V

118 lm/W

Physical

length 258 mm

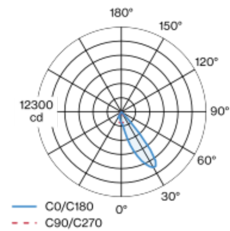
width 104 mm

height 76 mm

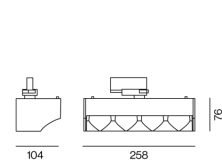
1.4 kg

Tracked spotlight in die cast aluminium with 4-lamp design; surface black powder coated; converter integrated into spotlight head; heat sink integrated into luminaire geometry for optimum thermal management and passive cooling of LEDs; with COB (Chip on Board) technology for maximum efficiency; light colour 3000 K; binning initial MacAdam ≤ 3 SDCM; CRI ≥ 80; min. 80% of luminous flux after 50000 operating hours; energy efficient LEDs with high CRI; aisle spotlight shelf floor washer with special, multi-free-form, facet effect surface reflectors for high precision light control; precise shelf and aisle zone lighting, optimum longitudinal glare control for high viewing comfort in the aisle zone; adjustable light module (tiltable +15° to -15°); 365° rotatable; degree of protection IP20; IP 40 protection glass available as an accessory; accessories are listed separately; PC1 220-240V; incl. DALI-2 converter; adapter for toolless insertion or movement on a variety of 3-phase power tracks; including attachment for linear alignment of the spotlights; light source replaceable by an authorized professional; control gear replaceable by an authorized professional;

Light distribution



Product drawing



¹ Value of containing product at full load (undimmed)

Installation instructions



Lighting calculator

