

# SQUADRO 2 × 4 lamps wallwasher

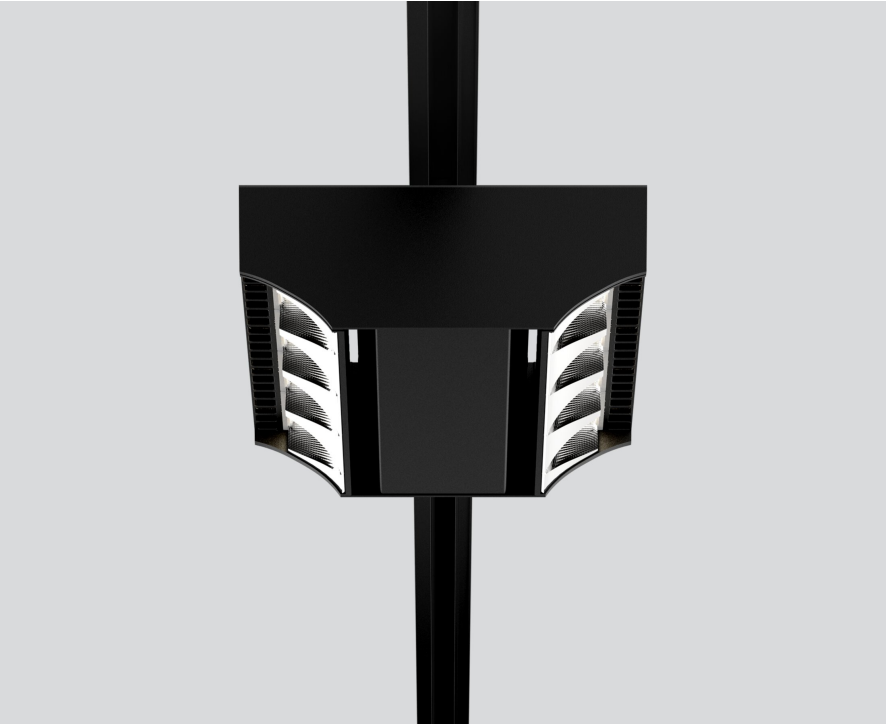
track  
149-2240538B



Project / Type

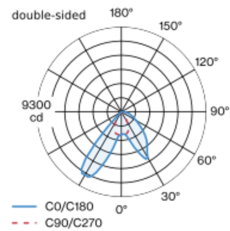
Notes

Count / Date

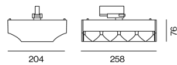


Tracked spotlight in die cast aluminium with 2x4-lamp design; surface jet black powder coated; converter integrated into spotlight head; heat sink integrated into luminaire geometry for optimum thermal management and passive cooling of LEDs; with COB (Chip on Board) technology for maximum efficiency; light colour 3000 K; binning initial MacAdam  $\leq 3$  SDCM; CRI  $\geq 80$ ; min. 80% of luminous flux after 50000 operating hours; energy efficient LEDs with high CRI; Aisle spotlight 1x shelf / 1x wall floor washer with special, multi-free-form, facet effect surface reflectors for high precision light control; precise shelf and aisle zone lighting, optimum longitudinal glare control for high viewing comfort in the aisle zone; adjustable light modules (tiltable +15° to -15°); 365° rotatable; degree of protection IP20; IP 40 protection glass available as an accessory; accessories are listed separately; PC1; 220-240 V; incl. DALI-2 converter; adapter for toolless insertion or movement on a variety of 3-phase power tracks; including attachment for linear alignment of the spotlights; light source replaceable by an authorized professional; control gear replaceable by an authorized professional;

## Light distribution



## Product drawing



## General

Ceiling | Track

tilt min 15°

tilt max 15°

rotation 365°

jet black | RAL 9005

IP20

10700 lm

## LED

3000 K

CRI  $\geq 80$

L80 / 50000 h

initial MacAdam  $\leq 3$  SDCM

MR 0.58 | MDER 0.52

## Optical

shelf / wall floor washer

PstLM  $\leq 1.0$ <sup>1 2 3 4</sup> | SVM  $\leq 0.4$ <sup>1 2 3 4</sup>

## Electrical

DALI-2 | 2 DALI Addr.

PC1 | 220-240 V

system 86 W

system 124 lm/W<sup>5</sup>

## Physical

length 258 mm | width 204 mm | height 76 mm

2.5 kg

<sup>1</sup> double-sided <sup>2</sup> single sided wall floor <sup>3</sup> single sided shelf floor  
<sup>4</sup> Value of containing product at full load (undimmed)  
<sup>5</sup> incl. consideration of optical losses, internal control unit losses & operating device efficiency

## Installation instructions



## Lighting calculator



# SQUADRO 2 × 4 lamps wallwasher

track  
149-2240538B



Project / Type

Notes

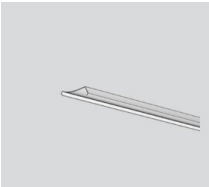
Count / Date

## Optical accessories

### IP40 PROTECTION GLASS

TYPE  
2 x 4 lamps / double-sided

ARTICLE NUMBER(S)  
049-2940010



## Circuit Breaker Types

Automatic Circuit Breaker Type	Number of Fixtures
B10	5
B13	6
B16	8
B20	10
C10	8
C13	10
C16	13
C20	17

